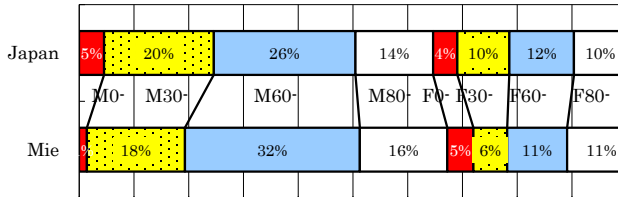


Mie

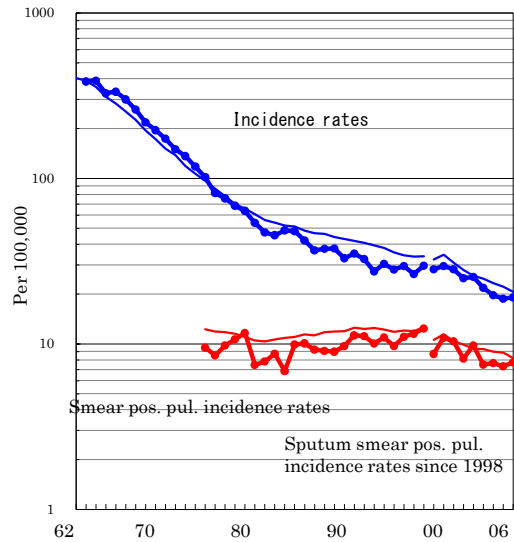
TB statistics in 2006		
Population	1,872,922	Mie (Japan)
Foreigners' TB	24	6.7% (3.5%)
Estimated homeless TB among male cases aged 30-59 yrs	1	1.6% (8.9%)

Trends	02	03	04	05	06
Notified cases	473	406	367	350	357
Rate per 100,000	25.4	21.8	19.7	18.7	19.1
Sputum smear pos. pul. cases	182	140	143	137	145
Rate per 100,000	9.8	7.5	7.7	7.3	7.7

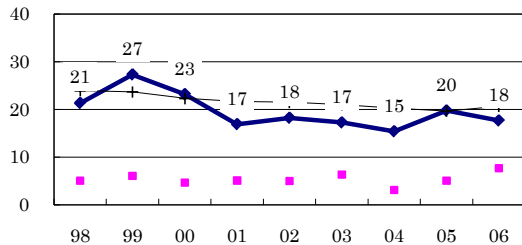
Age-sex composition of notified cases, 2006



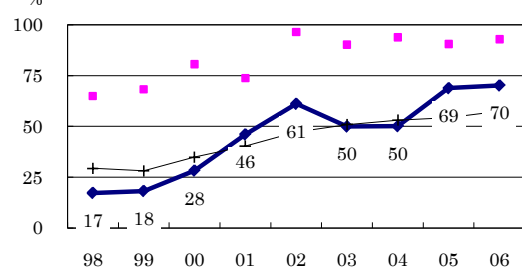
Trends of TB incidence rates



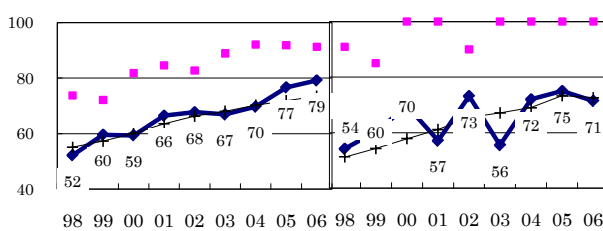
Proportion of cases with long diagnosis delay (>3M) among symptomatic pul. cases



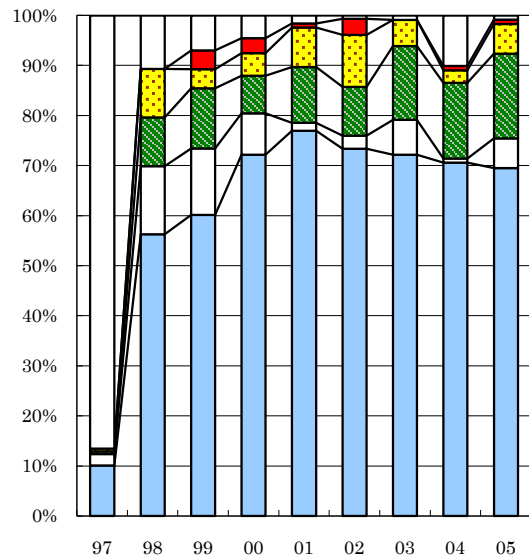
Proportion of positive or negative culture results among pulmonary cases



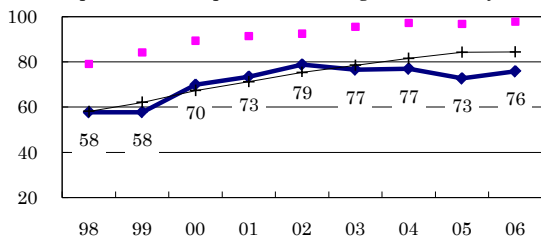
Proportion of bacillary cases among pulmonary cases



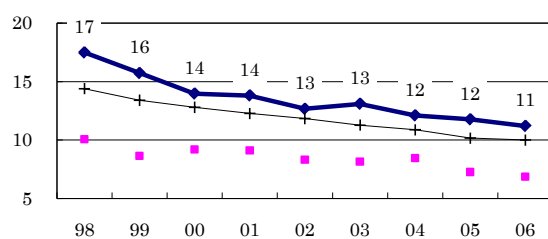
Treatment outcomes of new sputum smear-positive cases, 1997-2005 cohorts



Proportion of treatment with HRZ-E/S among new sputum smear-positive cases aged under 80 yrs



Estimated average treatment duration



Completed Others Died Failed Defaulted Unknown

	n=	178	103	158	133	126	154	115	119	118
Completed	10	56	60	72	77	73	72	71	69	
Others	2	14	13	8	2	3	7	1	6	
Died	1	10	12	8	11	10	15	15	17	
Failed	1	10	4	5	8	10	5	3	6	
Defaulted	0	0	4	3	1	3	0	1	1	
Unknown	87	11	7	5	2	1	1	10	1	