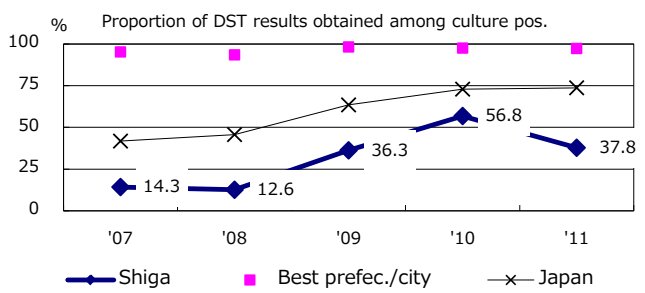
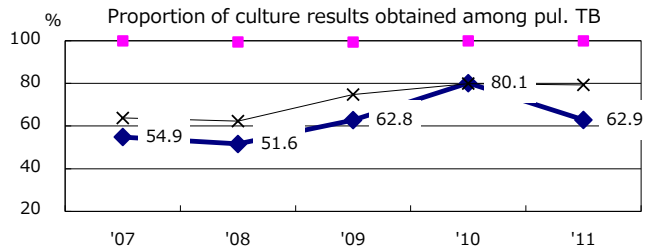
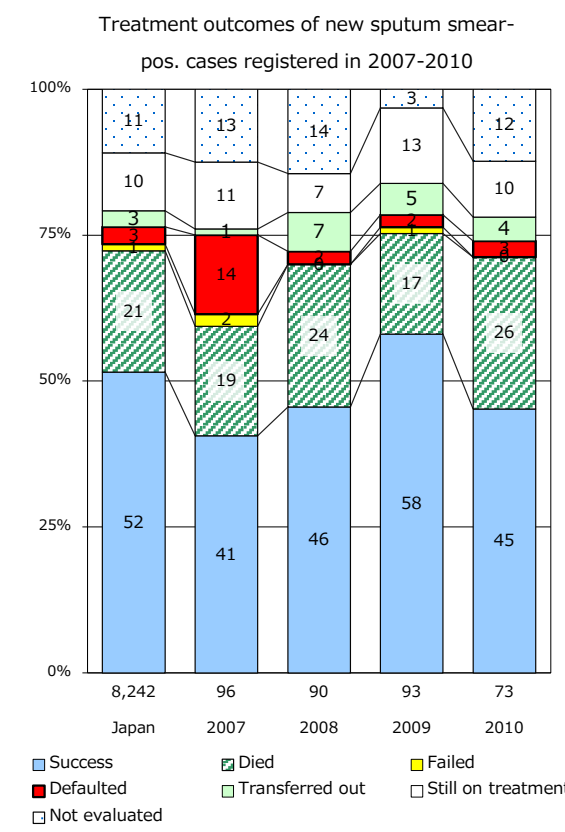
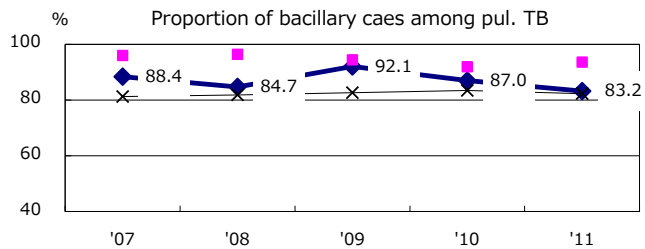
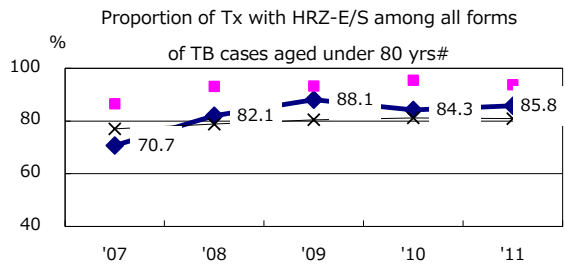
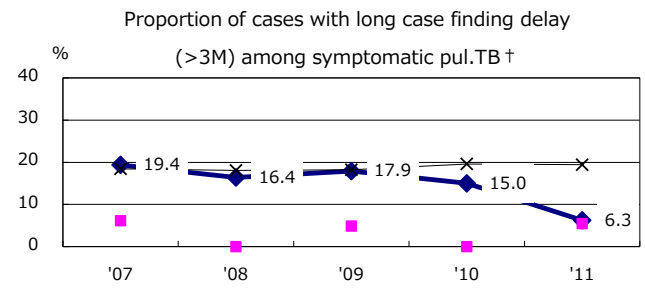
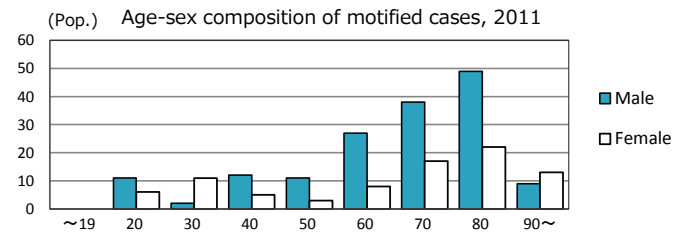
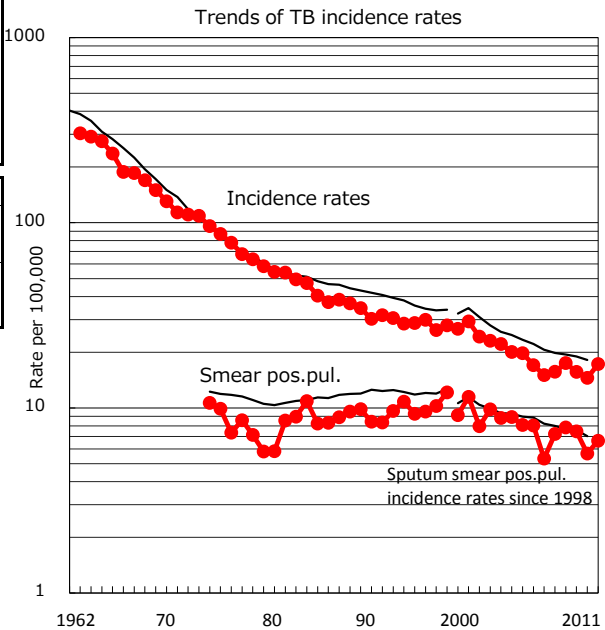


TB statistics in 2011		
Population	1,413,513	(Japan)
Foreign borns	16	6.6% (4.1%)
TB patients with homeless history	0	0.0% (1.4%)
Jobless TB patients getting public assistance, proportion among male TB patients aged 35-59 yrs	2	8.0% (10.6%)

Trends	'07	'08	'09	'10	'11
Notified cases	219	245	220	205	244
Rate per 100,000	15.7	17.5	15.7	14.5	17.3
Sputum smear pos. pul. cases	101	110	105	80	94
Rate per 100,000	7.2	7.8	7.5	5.7	6.7



	'07	'08	'09	'10	'11	Year of registration	'07	'08	'09	'10	Japan
† Excluding unknown delay(%)	12.5	55.5	45.1	8.3	39.6	Median days of treatment (all forms)	230	227	226	265	(272)
# Excluding unknown Tx(%)	16.9	4.9	1.4	3.8	2.0	Median days of hospitalization (pul.TB)	45	44	52	47	(65)