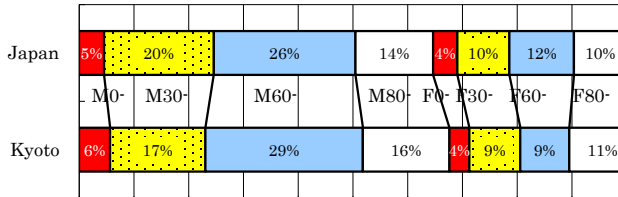


Kyoto

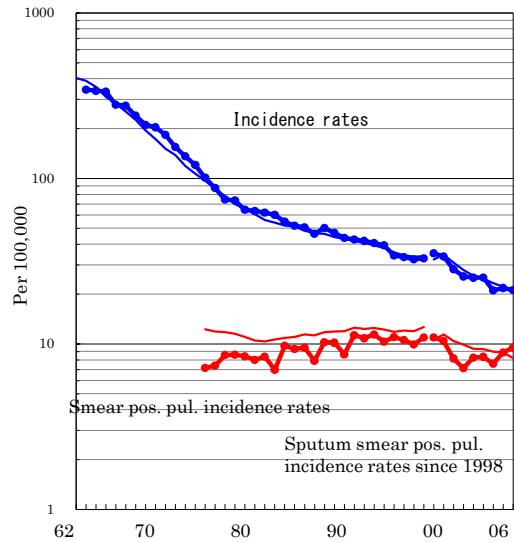
TB statistics in 2006		
Population	1,170,117	Kyoto (Japan)
Foreigners' TB	4	1.6% (3.5%)
Estimated homeless TB among male cases aged 30-59 yrs	1	2.3% (8.9%)

Trends	02	03	04	05	06
Notified cases	295	295	247	255	247
Rate per 100,000	25.1	25.1	21.0	21.7	21.1
Sputum smear pos. pul. cases	97	98	89	104	111
Rate per 100,000	8.3	8.3	7.6	8.9	9.5

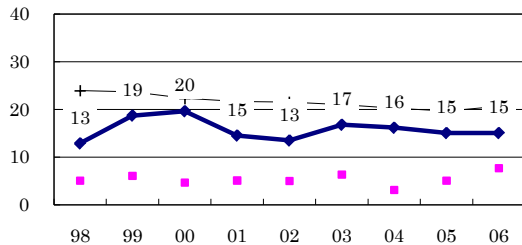
Age-sex composition of notified cases, 2006



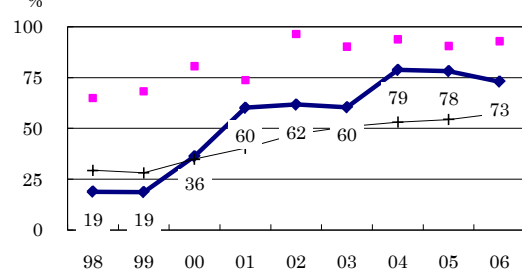
Trends of TB incidence rates



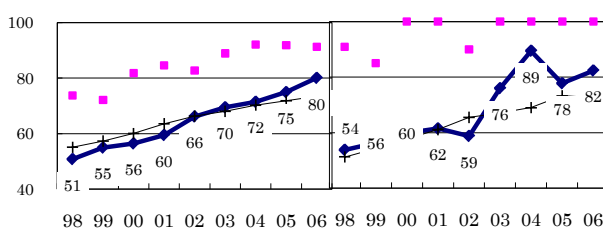
Proportion of cases with long diagnosis delay (>3M) among symptomatic pul. cases



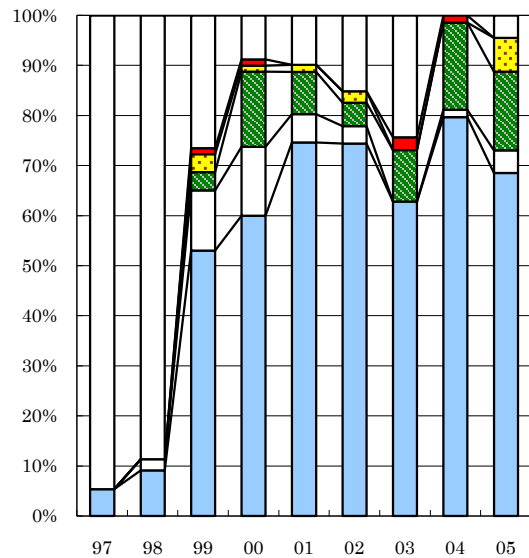
Proportion of positive or negative culture results among pulmonary cases



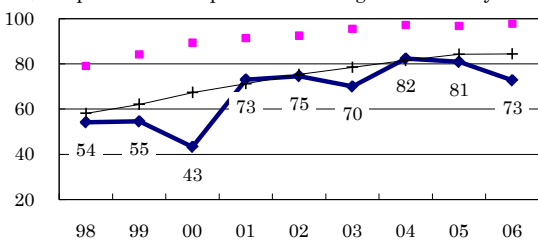
Proportion of bacillary cases among pulmonary cases



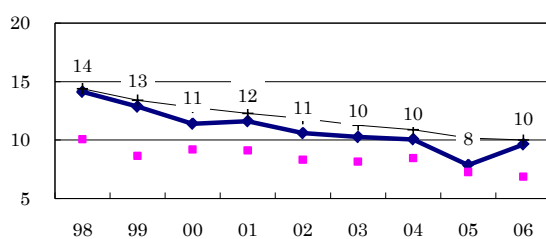
Treatment outcomes of new sputum smear-positive cases, 1997-2005 cohorts



Proportion of treatment with HRZ-E/S among new sputum smear-positive cases aged under 80 yrs



Estimated average treatment duration



Completed Others Died Failed Defaulted Unknown

	n=	93	88	83	80	71	86	78	69	89
Completed	5	9	53	60	75	74	63	80	69	69
Others	0	2	12	14	6	3	0	1	4	4
Died	0	0	4	15	8	5	10	17	16	16
Failed	0	0	4	1	1	2	0	0	7	7
Defaulted	0	0	1	1	0	0	3	1	0	0
Unknown	95	89	27	9	10	15	24	0	4	4

—●— Kyoto ■ Best prefecture/city —+— Japan