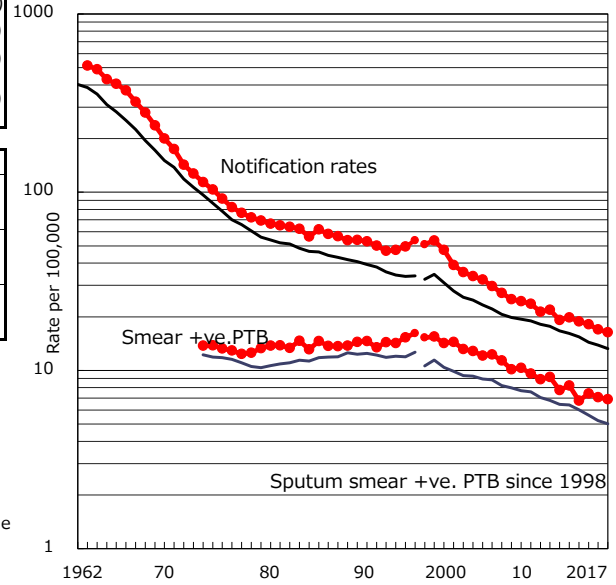


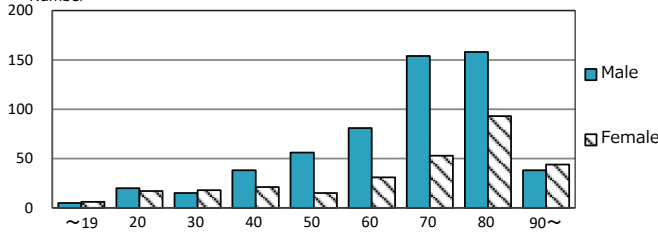
TB statistics in 2017 (Population in Osaka 5,275,862)	
Among newly notified : (Japan)	
Foreign borns	30 3.5% (9.1%)
TB cases with homeless history	1 0.1% (0.9%)
Male aged 35-59,without job and receiving public assistance	3 2.8% (7.3%)

Trends	'13	'14	'15	'16	2017
Notified cases	1,056	999	964	895	863
Rate per 100,000 population	19.8	18.8	18.2	17.0	16.4
Sputum smear +ve. PTB	438	359	393	374	364
Rate per 100,000 population	8.2	6.8	7.4	7.1	6.9
Latent Tuberculosis Infection	373	288	320	416	306
Rate per 100,000 population	7.0	5.4	6.0	7.9	5.8

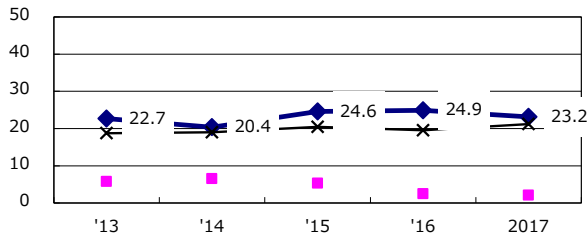
Trends of TB notification rates, all forms and smear +ve.PTB



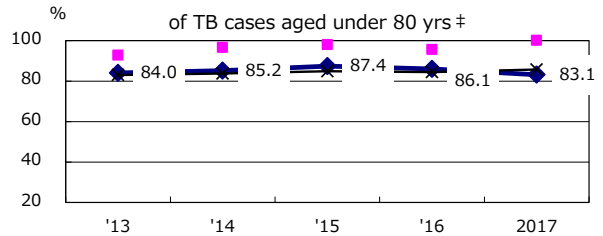
Age-sex composition of notified cases, 2017



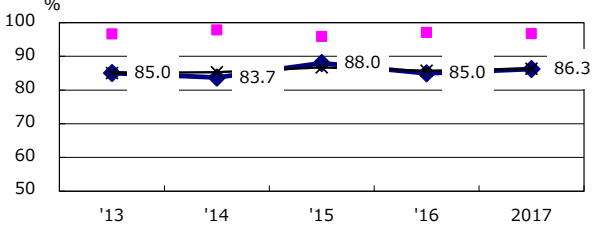
Proportion of cases with total diagnosis delay(> 3 mths) among symptomatic PTB*



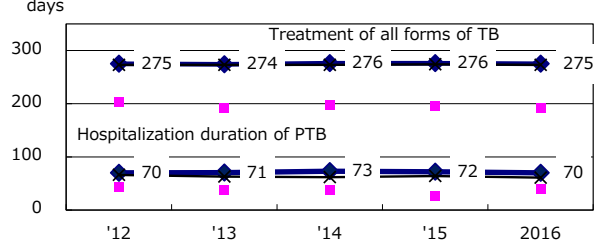
Proportion of TX with HRZ-E/S among all forms



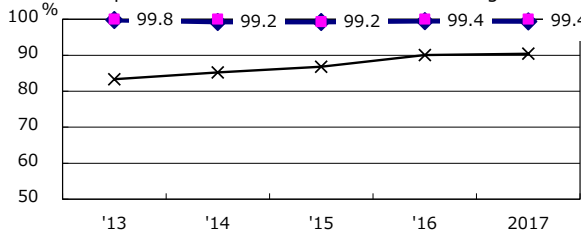
Proportion of Bacteriologically +ve. PTB



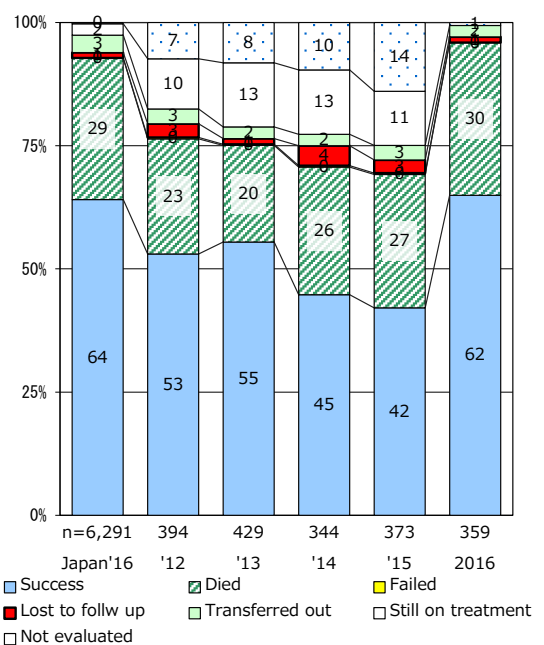
Median duration of treatment of all forms and hospitalization among PTB



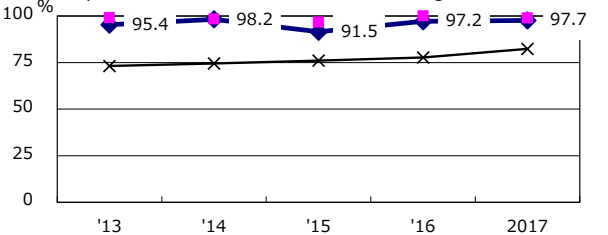
Proportion of culture results obtained among PTB



Treatment outcomes of new sputum smear +ve.TB



Proportion of DST results obtained among culture +ve. PTB



PTB : pulmonary TB

† Excluding unknown delay(%)	'13	'14	'15	'16	2017
	6.9	16.2	4.9	3.8	4.4

‡ Excluding unknown Tx(%)	'13	'14	'15	'16	2017
	0.8	1.1	1.9	1.1	1.7