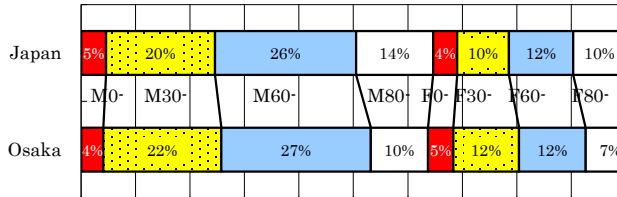


# Osaka

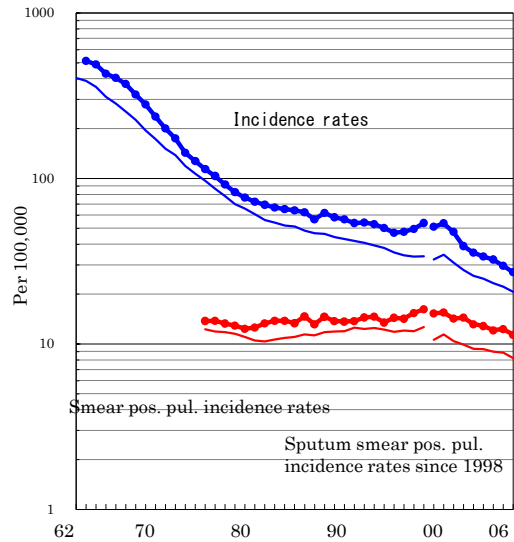
TB statistics in 2006		
Population	6,179,302	Osaka (Japan)
Foreigners' TB	19	1.1% (3.5%)
Estimated homeless TB among male cases aged 30-59 yrs	25	6.9% (8.9%)

Trends	02	03	04	05	06
Notified cases	2,207	2,091	2,000	1,837	1,679
Rate per 100,000	35.6	33.8	32.4	29.7	27.2
Sputum smear pos. pul. cases	815	794	747	760	702
Rate per 100,000	13.2	12.8	12.1	12.3	11.4

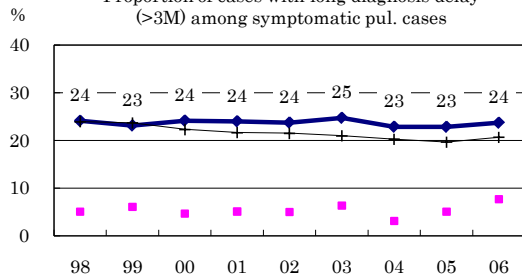
Age-sex composition of notified cases, 2006



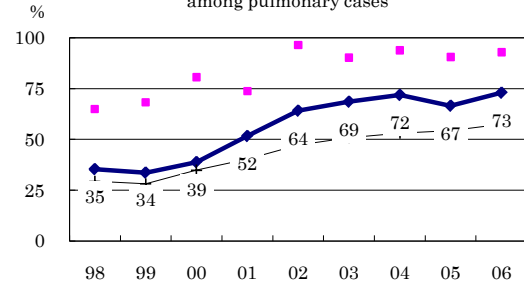
Trends of TB incidence rates



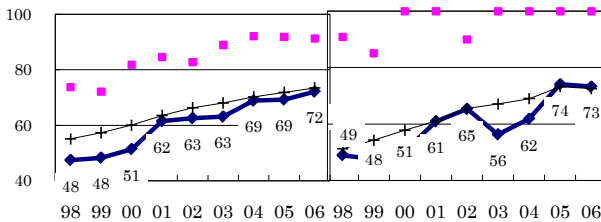
Proportion of cases with long diagnosis delay (>3M) among symptomatic pul. cases



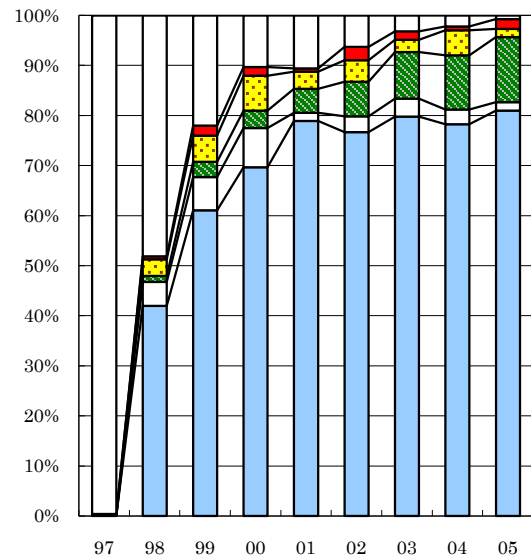
Proportion of positive or negative culture results among pulmonary cases



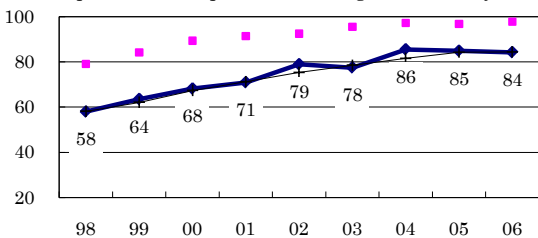
Proportion of bacillary cases among pulmonary cases



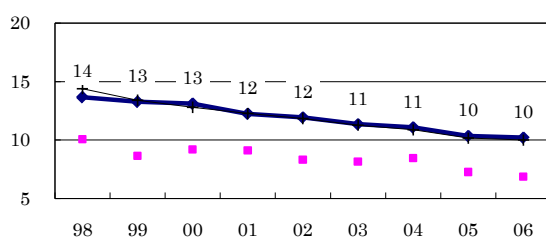
Treatment outcomes of new sputum smear-positive cases, 1997-2005 cohorts



Proportion of treatment with HRZ-E/S among new sputum smear-positive cases aged under 80 yrs



Months Estimated average treatment duration



—●— Osaka    ■ Best prefecture/city    —+— Japan

	Completed	Others	Died	Failed	Defaulted	Unknown			
n=	740	665	650	689	730	704	698	639	669
Completed	0	42	61	70	79	77	80	78	81
Others	0	5	7	8	2	3	4	3	2
Died	0	1	3	3	5	7	9	11	13
Failed	0	3	5	7	3	4	2	5	2
Defaulted	0	1	2	2	1	3	2	1	2
Unknown	100	48	22	10	11	6	3	2	1