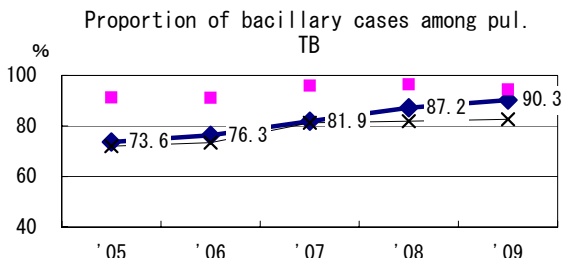
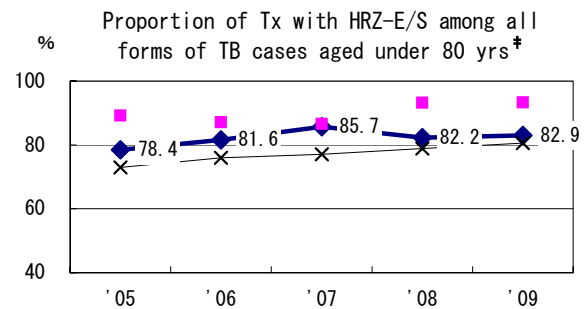
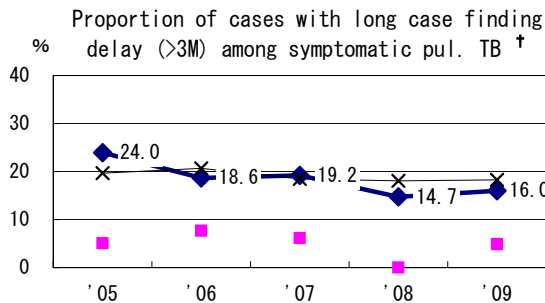
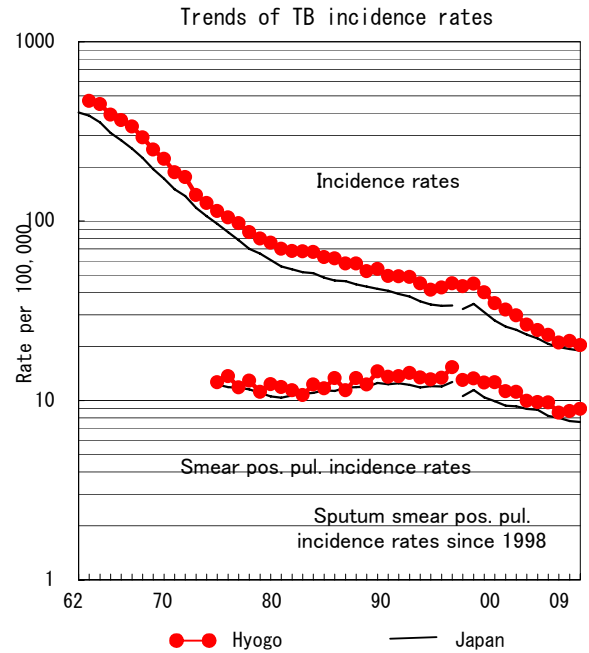
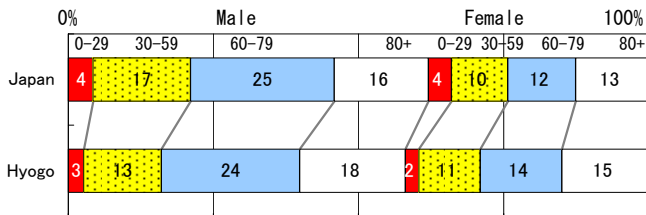


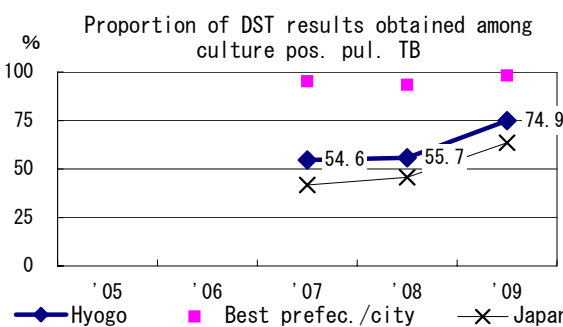
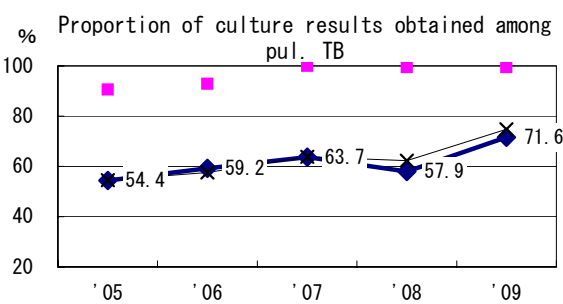
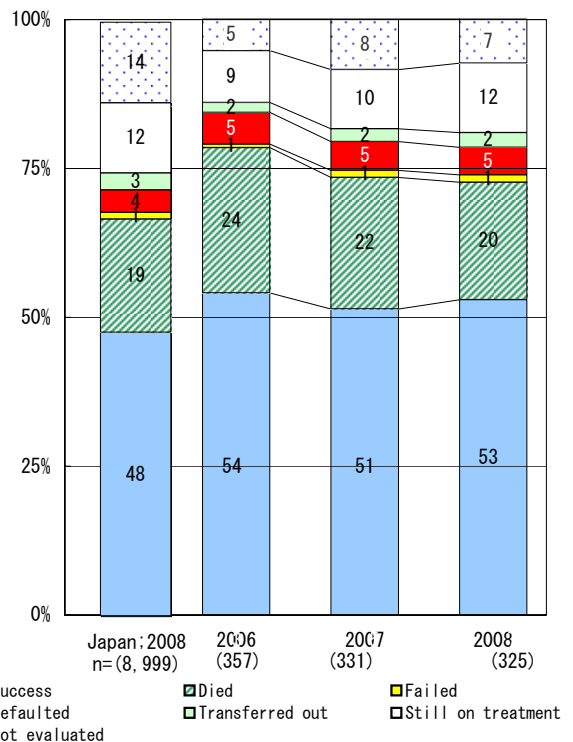
TB statistics in 2009		
Population	4,045,950	(Japan)
Foreigners	19	2.3% (3.9%)
Estimated homeless or poor TB among male cases aged 30-59 yrs	11	10.0% (12.0%)

Trends	'05	'06	'07	'08	'09
Notified cases	1,002	941	854	869	823
Rate per 100,000	24.6	23.2	21.0	21.4	20.3
Sputum smear pos. pul. cases	397	395	347	354	363
Rate per 100,000	9.8	9.7	8.5	8.7	9.0

Age-sex composition of notified cases, 2009



Treatment outcomes of new sputum smear-pos. pul. cases registered in 2006-2008



	'05	'06	'07	'08	'09
† Excluding unk delay (%)	7.3	1.1	19.8	23.9	38.5
‡ Excluding unk Tx (%)	0.5	0.3	0.5	0.5	0.2

Registered year	'07	'08	Japan
Median days of treatment (all forms)	230	261	(272)
Median days of hospitalization (pul. TB)	65	63	(67)