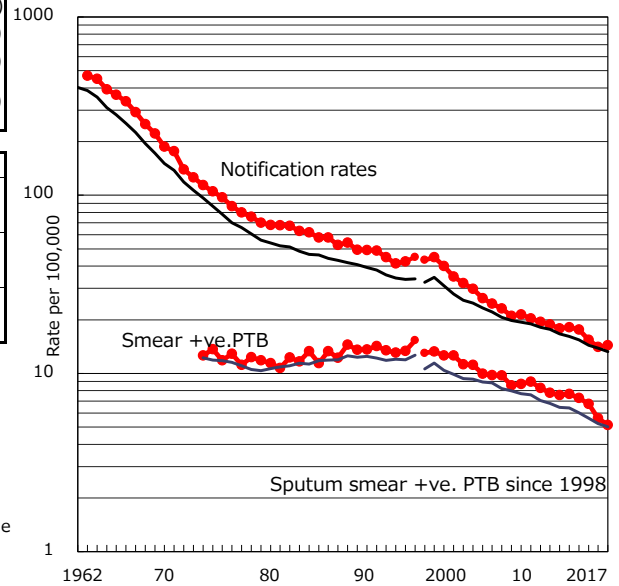


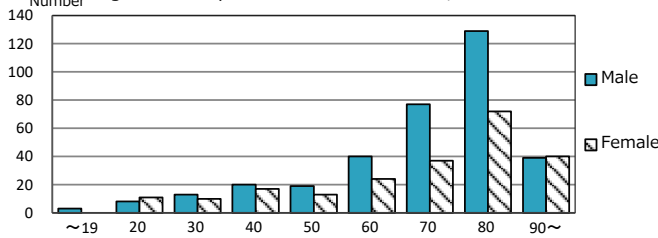
TB statistics in 2017 ( Population in Hyogo 3,970,958 )	
Among newly notified : (Japan)	
Foreign borns	20 3.5% (9.1%)
TB cases with homeless history	0 0.0% (0.9%)
Male aged 35-59, without job and receiving public assistance	1 1.9% (7.3%)

Trends	'13	'14	'15	'16	2017
Notified cases	729	706	617	559	572
Rate per 100,000 population	18.1	17.6	15.4	14.1	14.4
Sputum smear +ve. PTB	308	291	270	223	204
Rate per 100,000 population	7.7	7.3	6.8	5.6	5.1
Latent Tuberculosis Infection	197	149	158	167	174
Rate per 100,000 population	4.9	3.7	4.0	4.2	4.4

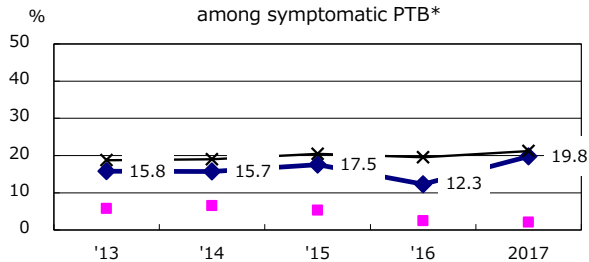
Trends of TB notification rates, all forms and smear +ve.PTB



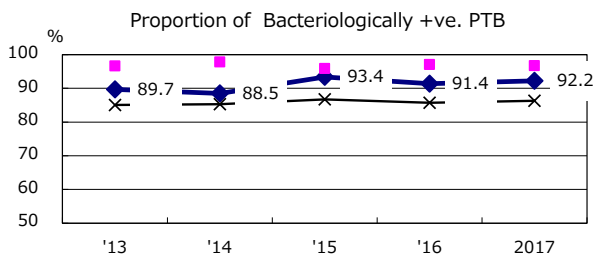
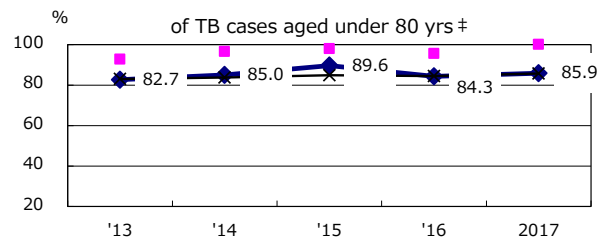
Age-sex composition of notified cases, 2017



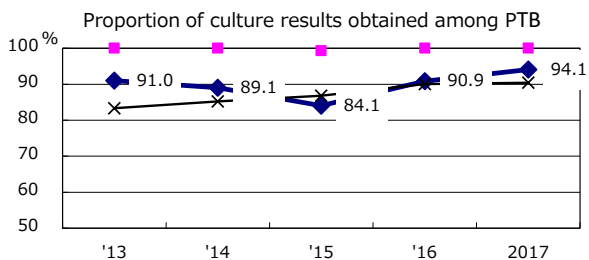
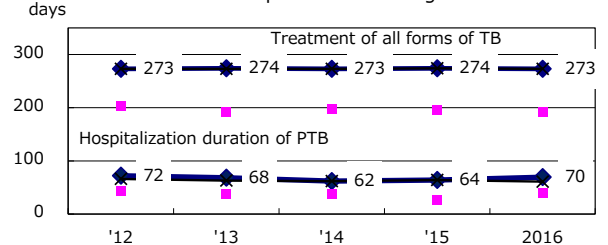
Proportion of cases with total diagnosis delay(> 3 mths) among symptomatic PTB\*



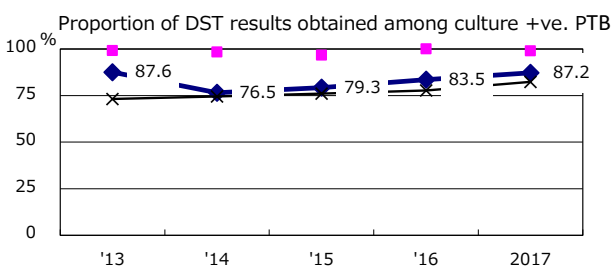
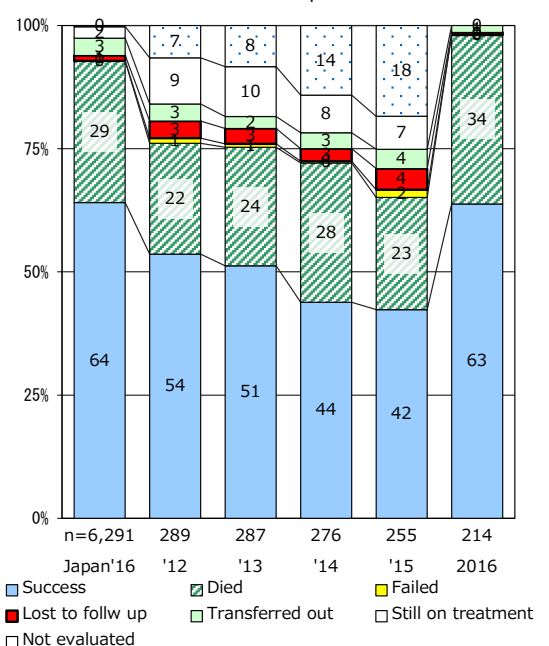
Proportion of TX with HRZ-E/S among all forms of TB cases aged under 80 yrs †



Median duration of treatment of all forms and hospitalization among PTB



Treatment outcomes of new sputum smear +ve.TB



PTB : pulmonary TB

† Excluding unknown delay(%)	'13	'14	'15	'16	2017
	9.2	18.3	23.0	21.0	27.1

‡ Excluding unknown Tx(%)	'13	'14	'15	'16	2017
	0.6	1.4	1.7	1.6	0.7