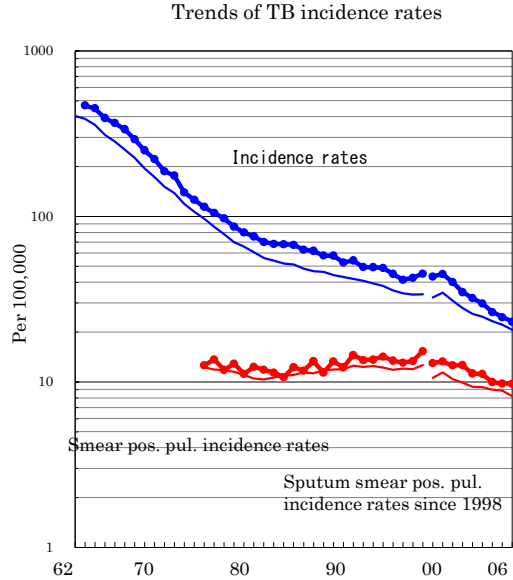
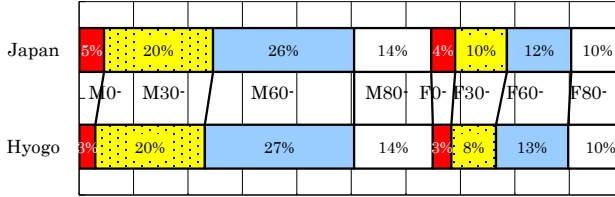


Hyogo

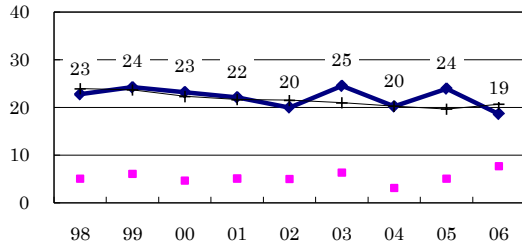
TB statistics in 2006		
Population	4,061,784	Hyogo (Japan)
Foreigners' TB	16	1.7% (3.5%)
Estimated homeless TB among male cases aged 30-59 yrs	14	7.4% (8.9%)

Trends	02	03	04	05	06
Notified cases	1,306	1,212	1,075	1,002	941
Rate per 100,000	32.1	29.8	26.4	24.6	23.2
Sputum smear pos. pul. cases	457	454	405	397	395
Rate per 100,000	11.2	11.2	10.0	9.8	9.7

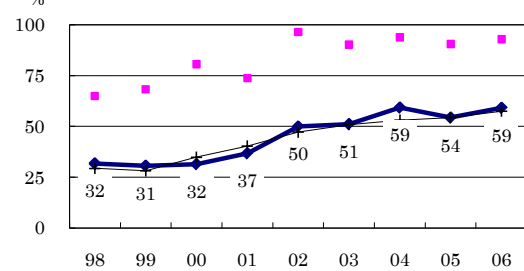
Age-sex composition of notified cases, 2006



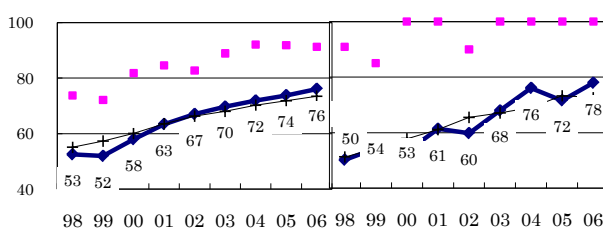
Proportion of cases with long diagnosis delay (>3M) among symptomatic pul. cases



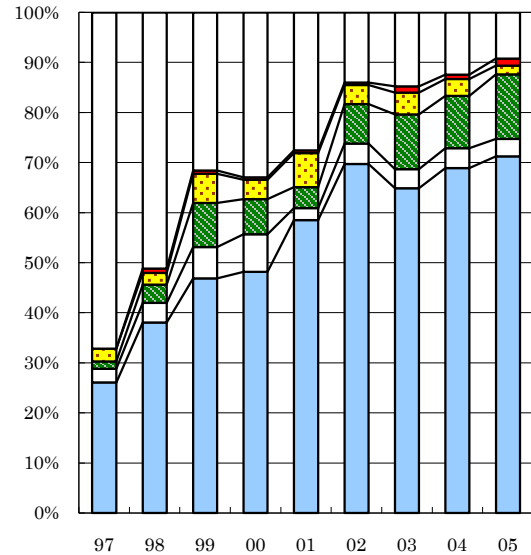
Proportion of positive or negative culture results among pulmonary cases



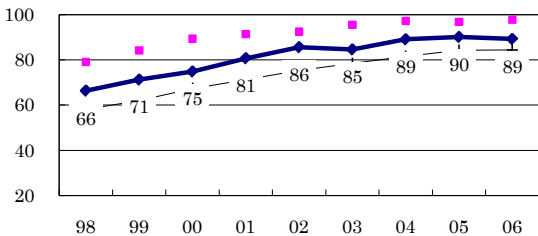
Proportion of bacillary cases among pulmonary cases



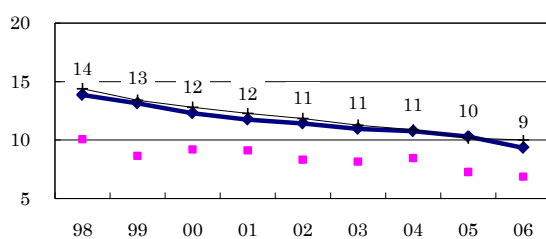
Treatment outcomes of new sputum smear-positive cases, 1997-2005 cohorts



Proportion of treatment with HRZ-E/S among new sputum smear-positive cases aged under 80 yrs



Estimated average treatment duration



	97	98	99	00	01	02	03	04	05
Completed	26	38	47	48	59	70	65	69	71
Others	3	4	6	8	2	4	4	4	3
Died	1	4	9	7	4	8	11	10	13
Failed	3	2	6	4	7	4	4	3	2
Defaulted	0	1	1	0	1	1	1	1	1
Unknown	67	51	32	33	28	14	15	12	9

—●— Hyogo ■ Best prefecture/city —+— Japan