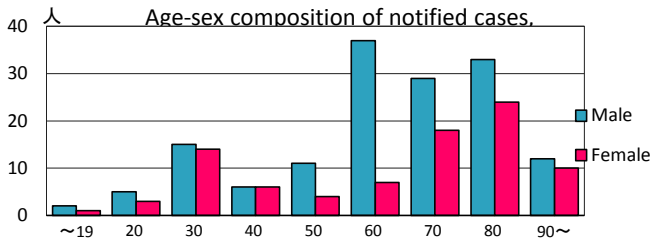
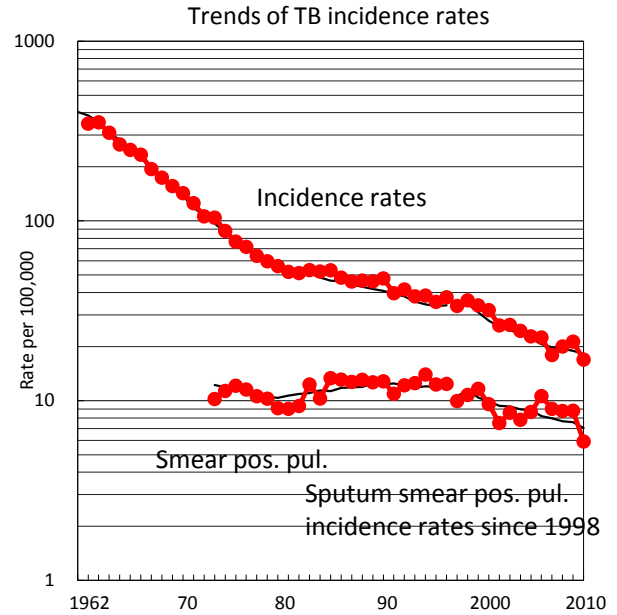
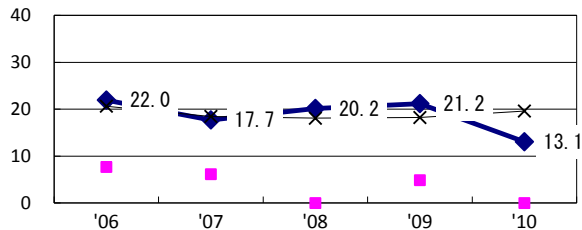


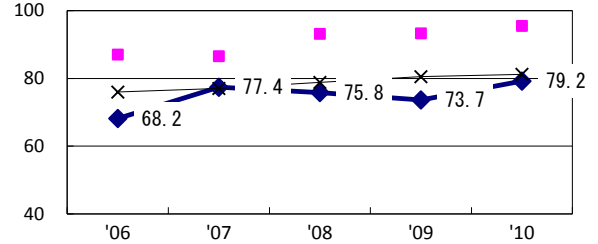
TB statistics in 2010					
Population	1,399,978			(Japan)	
Foreign borns	8	3.4%		(4.1%)	
TB patients with homeless history	1	0.4%		(1.4%)	
Jobless TB patients getting public assistance, proportion among male TB patients aged 35-59 yrs	1	3.1%		(10.8%)	
Trends	'06	'07	'08	'09	'10
Notified cases	318	253	281	298	237
Rate per 100,000	22.5	17.9	20.0	21.3	16.9
Sputum smear pos. pul. cases	150	127	123	123	83
Rate per 100,000	10.6	9.0	8.8	8.8	5.9



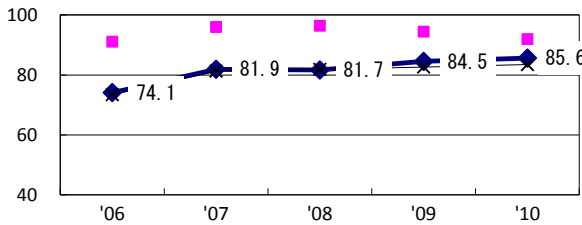
Proportion of cases with long case finding delay (>3M) among symptomatic pul. TB †



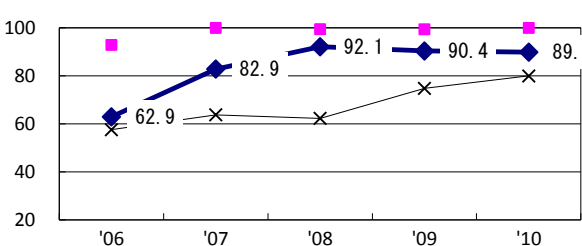
Proportion of Tx with HRZ-E/S among all forms of TB cases aged under 80 yrs‡



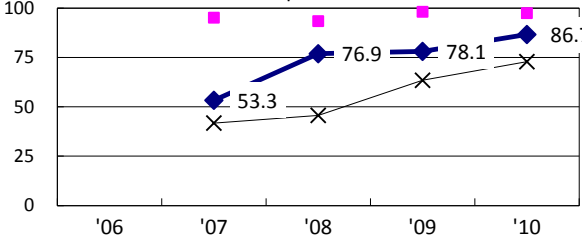
Proportion of bacillary cases among pul. TB



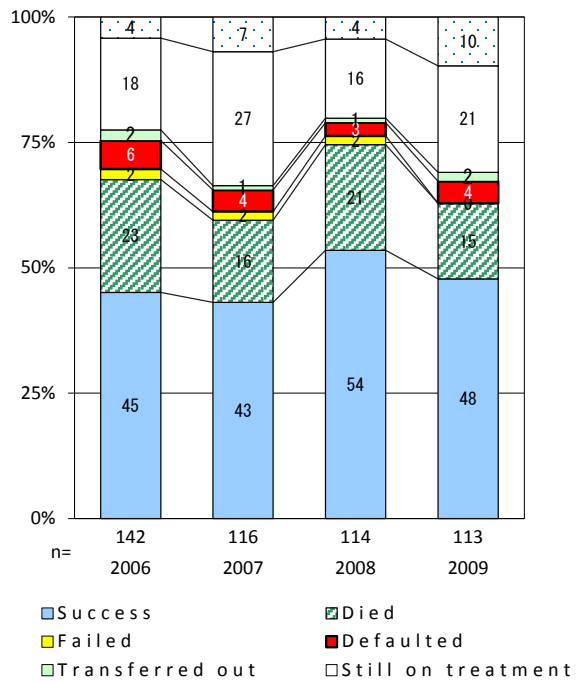
Proportion of culture results obtained among pul. TB



Proportion of DST results obtained among culture pos. pul. TB



Treatment outcomes of new sputum smear-pos. pul. cases registered in 2006-2009



◆ Nara ■ Best prefec./city × Japan

	'06	'07	'08	'09	'10	Year of registration	'07	'08	'09	Japan
†Excluding unknown delay(%)	5.5	16.6	36.3	5.7	12.2	Median days of treatment (all forms)	293	297	283	(270)
‡Excluding unknown Tx (%)	1.3	4.3	1.0	1.4	2.5	Median days of hospitalization (pul.TB)	69	67	63	(68)