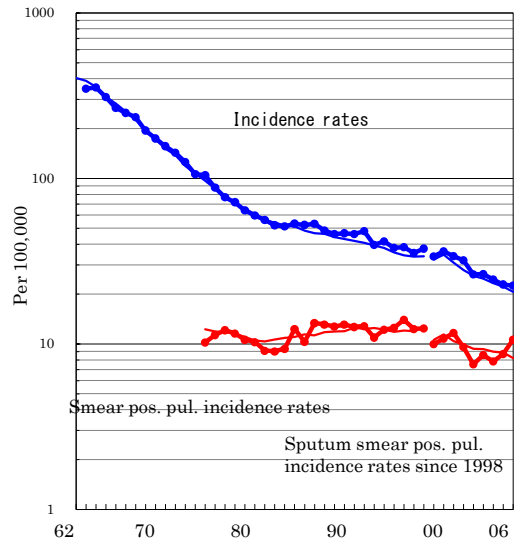


# Nara

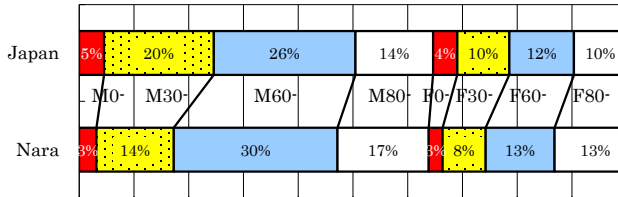
TB statistics in 2006		
Population	1,415,554	Nara (Japan)
Foreigners' TB	1	0.3% (3.5%)
Estimated homeless TB among male cases aged 30-59 yrs	4	8.9% (8.9%)

Trends	02	03	04	05	06
Notified cases	377	379	350	324	318
Rate per 100,000	26.2	26.4	24.5	22.8	22.5
Sputum smear pos. pul. cases	108	123	112	123	150
Rate per 100,000	7.5	8.6	7.8	8.7	10.6

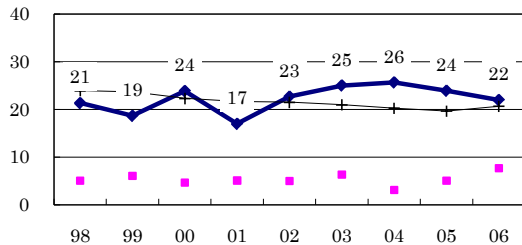
Trends of TB incidence rates



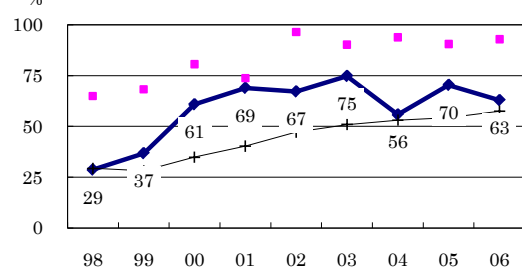
Age-sex composition of notified cases, 2006



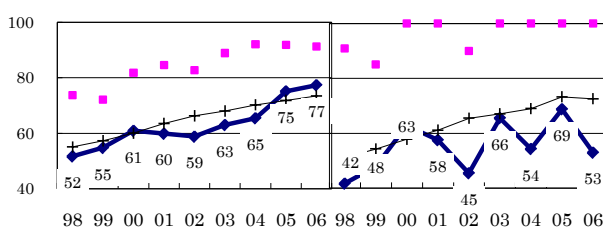
Proportion of cases with long diagnosis delay (>3M) among symptomatic pul. cases



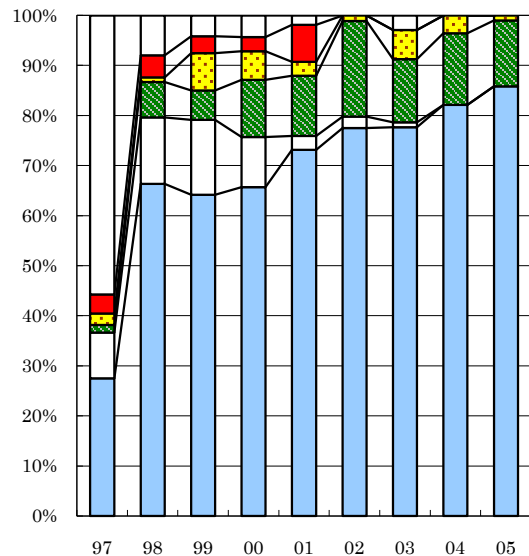
Proportion of positive or negative culture results among pulmonary cases



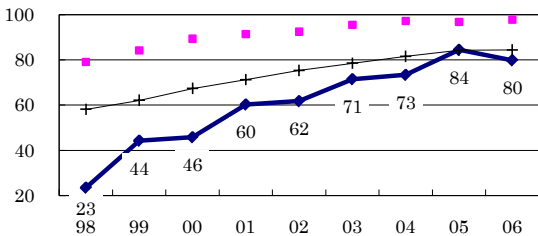
Proportion of bacillary cases among pulmonary cases



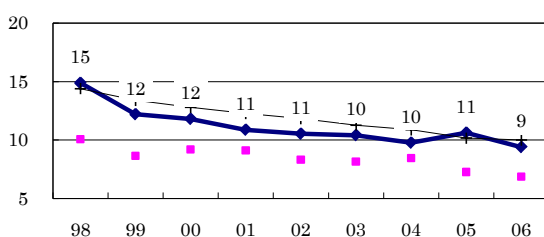
Treatment outcomes of new sputum smear-positive cases, 1997-2005 cohorts



Proportion of treatment with HRZ-E/S among new sputum smear-positive cases aged under 80 yrs



Estimated average treatment duration



Completed Others Died Failed Defaulted Unknown

	n=	131	113	120	140	108	89	103	84	99
Completed	27	66	64	66	73	78	78	78	82	86
Others	9	13	15	10	3	2	1	0	0	0
Died	2	7	6	11	12	19	13	14	13	13
Failed	2	1	8	6	3	1	6	4	1	1
Defaulted	4	4	3	3	7	0	0	0	0	0
Unknown	56	8	4	4	2	0	3	0	0	0

—●— Nara    ■ Best prefecture/city    —+— Japan