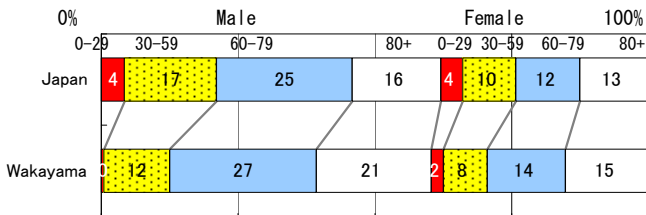


Wakayama

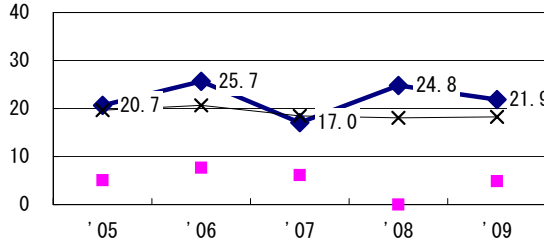
TB statistics in 2009		
Population	1,004,450	(Japan)
Foreigners	1	0.4% (3.9%)
Estimated homeless or poor TB among male cases aged 30-59 yrs	2	7.4% (12.0%)

Trends	'05	'06	'07	'08	'09
Notified cases	267	218	240	248	224
Rate per 100,000	25.8	21.2	23.5	24.5	22.3
Sputum smear pos. pul. cases	99	89	88	100	102
Rate per 100,000	9.6	8.7	8.6	9.9	10.2

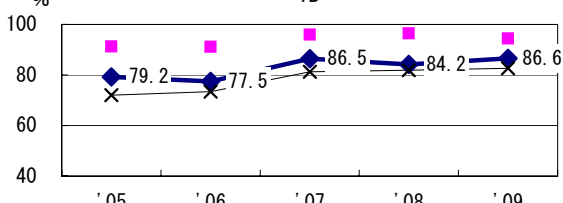
Age-sex composition of notified cases, 2009



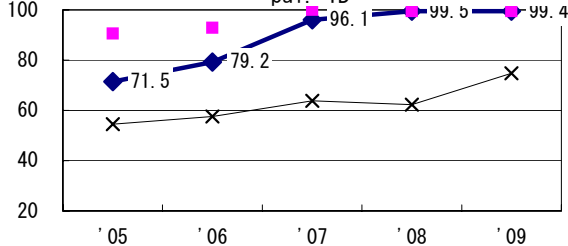
Proportion of cases with long case finding delay (>3M) among symptomatic pul. TB †



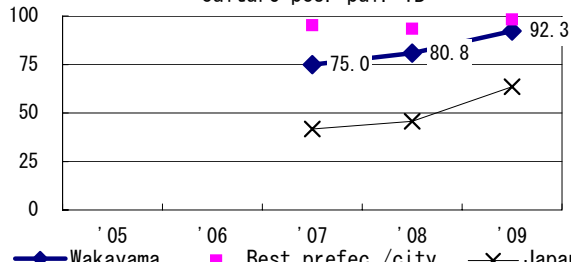
Proportion of bacillary cases among pul. TB



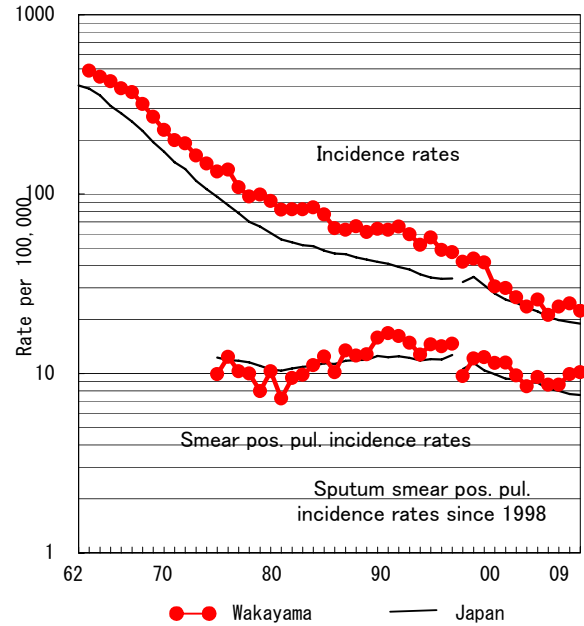
Proportion of culture results obtained among pul. TB



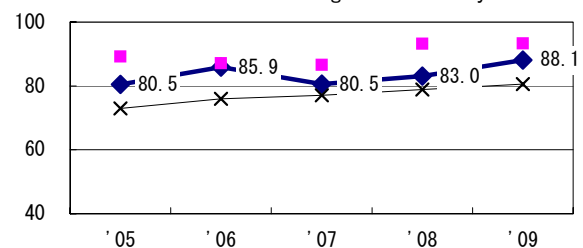
Proportion of DST results obtained among culture pos. pul. TB



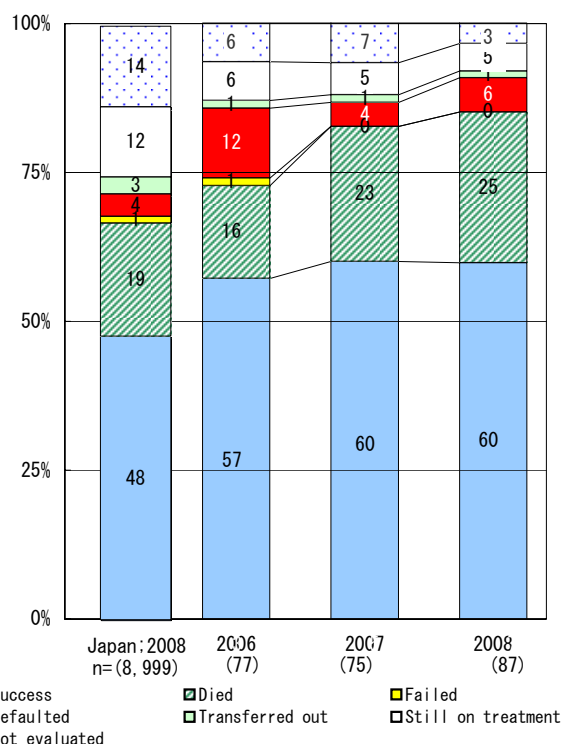
Trends of TB incidence rates



Proportion of Tx with HRZ-E/S among all forms of TB cases aged under 80 yrs ‡



Treatment outcomes of new sputum smear-pos. pul. cases registered in 2006-2008



	'05	'06	'07	'08	'09
† Excluding unk delay (%)	5.7	1.7	4.3	12.6	1.4
‡ Excluding unk Tx (%)	0.0	0.6	0.0	0.0	0.0

Registered year	'07	'08	Japan
Median days of treatment (all forms)	265	250	(272)
Median days of hospitalization (pul. TB)	60	63	(67)