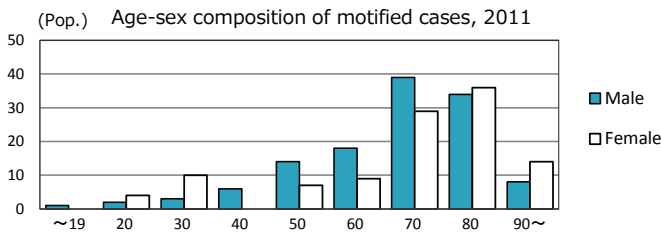
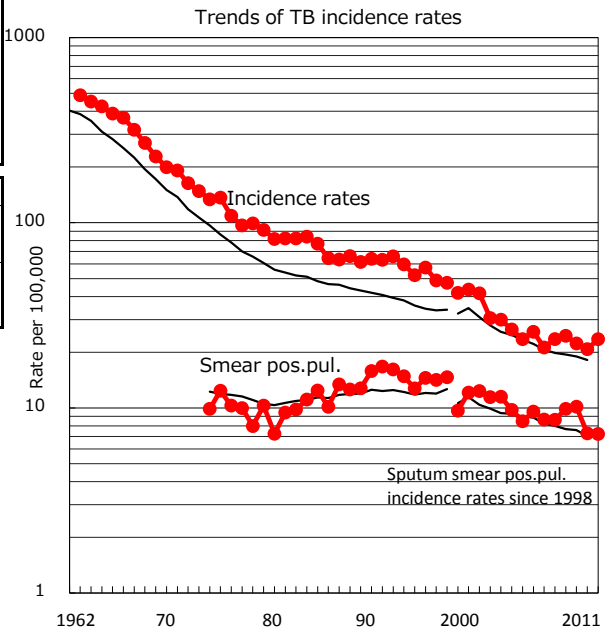
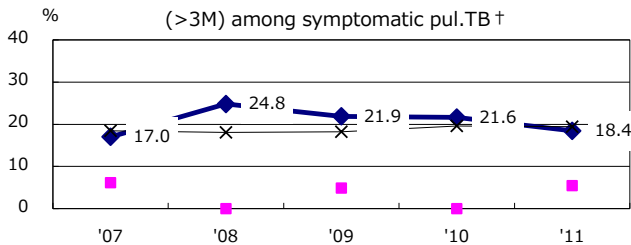


TB statistics in 2011		
Population	995,010	(Japan)
Foreign borns	4	1.7% (4.1%)
TB patients with homeless history	3	1.3% (1.4%)
Jobless TB patients getting public assistance, proportion among male TB patients aged 35-59 yrs	2	8.7% (10.6%)

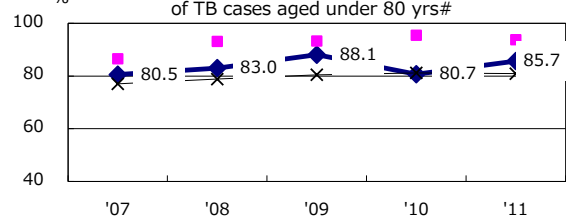
Trends	'07	'08	'09	'10	'11
Notified cases	240	248	224	208	234
Rate per 100,000	23.5	24.5	22.3	20.8	23.5
Sputum smear pos.pul.cases	88	100	102	73	72
Rate per 100,000	8.6	9.9	10.2	7.3	7.2



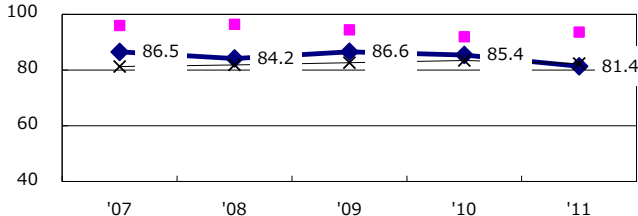
Proportion of cases with long case finding delay (>3M) among symptomatic pul.TB †



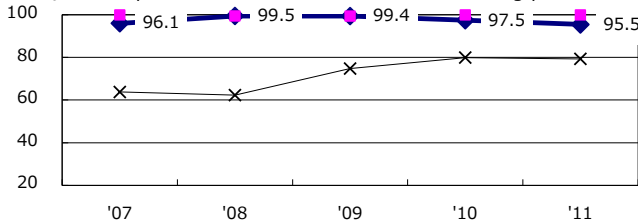
Proportion of Tx with HRZ-E/S among all forms of TB cases aged under 80 yrs#



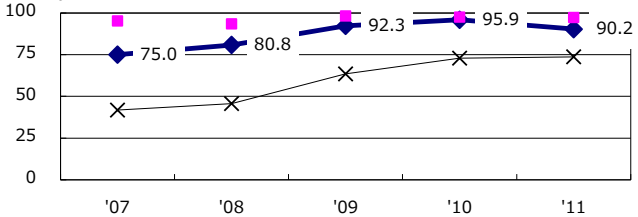
Proportion of bacillary caes among pul. TB



Proportion of culture results obtained among pul. TB

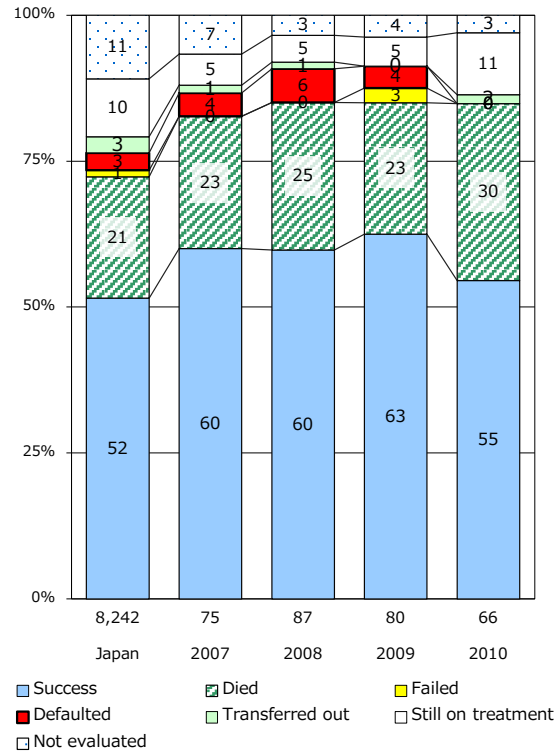


Proportion of DST results obtained among culture pos.



—◆— Wakayama    —■— Best prefec./city    —x— Japan

Treatment outcomes of new sputum smear-pos. cases registered in 2007-2010



	'07	'08	'09	'10	'11	Year of registration	'07	'08	'09	'10	Japan
† Excluding unknown delay(%)	4.3	12.6	1.4	0.0	0.0	Median days of treatment (all forms)	265	250	271	273	(272)
#Excluding unknown Tx(%)	1.3	1.7	0.0	0.7	6.3	Median days of hospitalization (pul.TB)	60	63	65	63	(65)