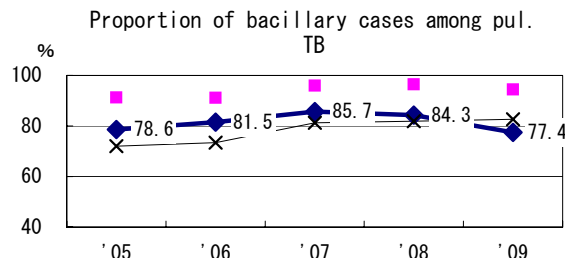
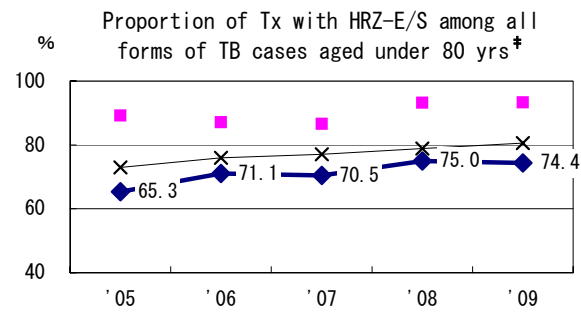
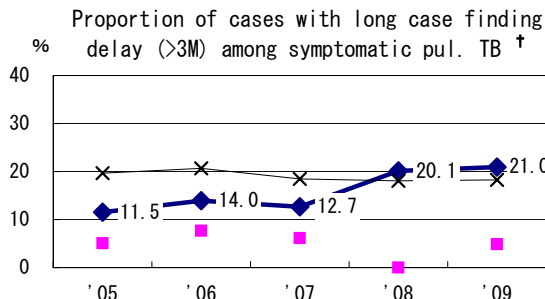
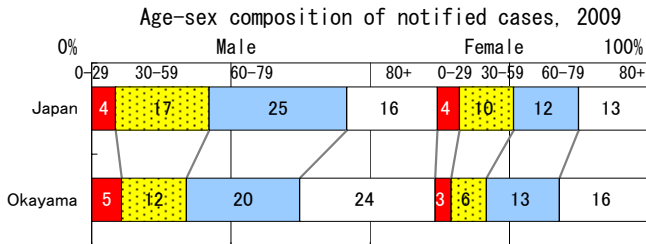
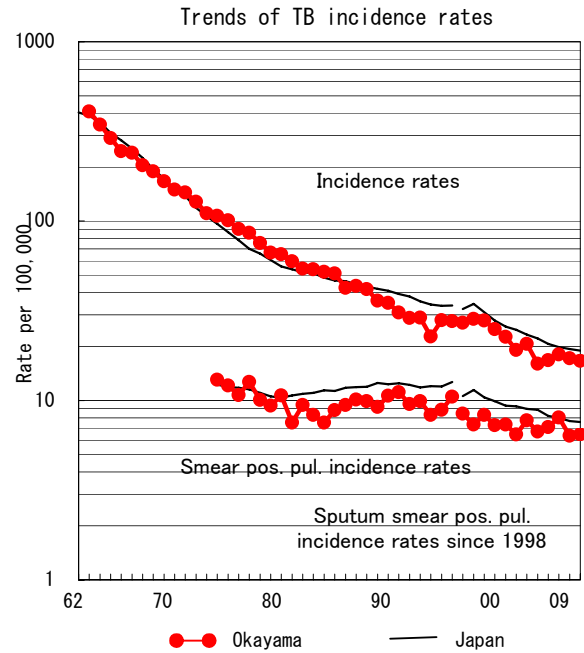


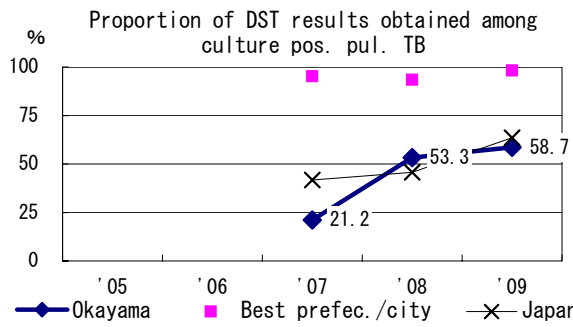
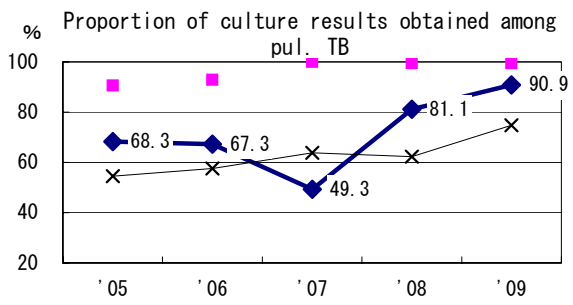
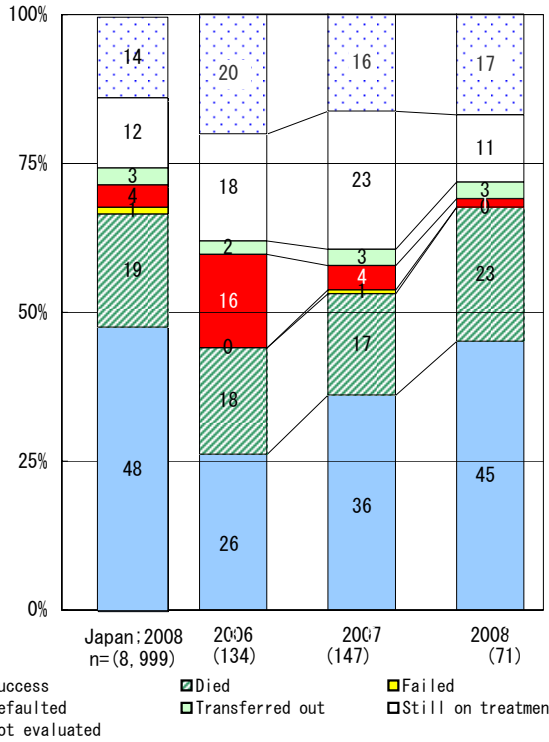
Okayama

TB statistics in 2009		
Population	1,237,376	(Japan)
Foreigners	11	5.3% (3.9%)
Estimated homeless or poor TB among male cases aged 30-59 yrs	0	0.0% (12.0%)

Trends	'05	'06	'07	'08	'09
Notified cases	313	328	352	334	206
Rate per 100,000	16.0	16.8	18.0	17.1	16.6
Sputum smear pos. pul. cases	131	139	157	124	80
Rate per 100,000	6.7	7.1	8.0	6.4	6.5



Treatment outcomes of new sputum smear-pos. pul. cases registered in 2006-2008



	'05	'06	'07	'08	'09
† Excluding unk delay (%)	17.3	15.1	34.3	23.0	11.8
‡ Excluding unk Tx (%)	7.1	6.0	8.5	1.4	0.8

Registered year	'07	'08	Japan
Median days of treatment (all forms)	281	274	(272)
Median days of hospitalization (pul. TB)	77	98	(67)