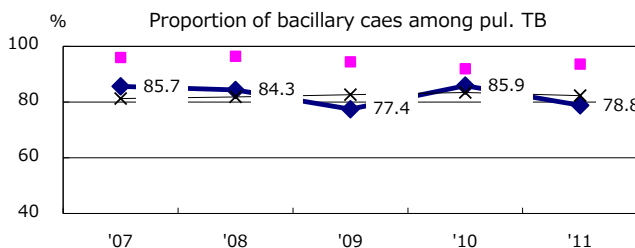
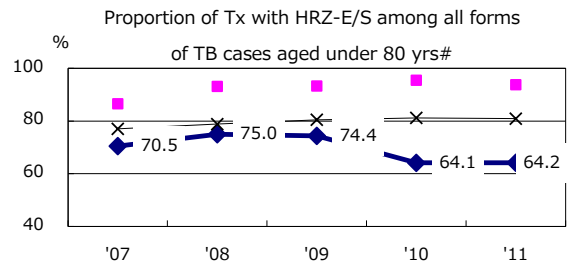
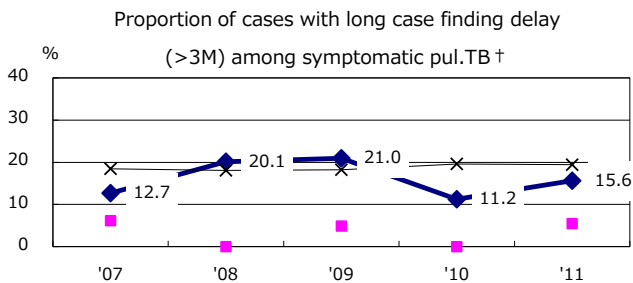
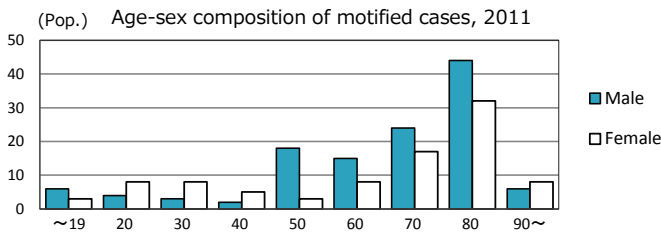
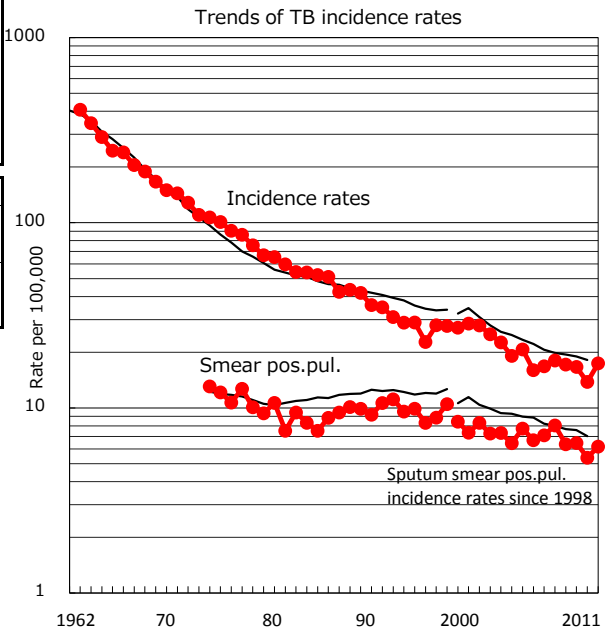
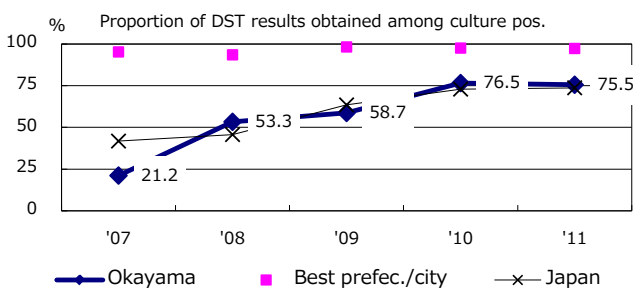
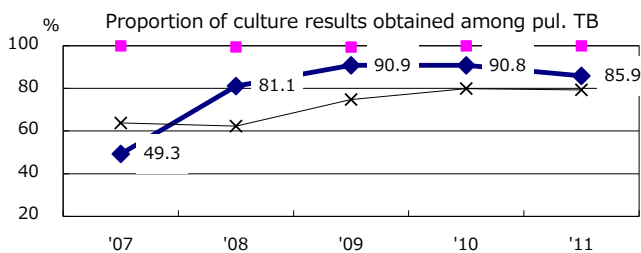
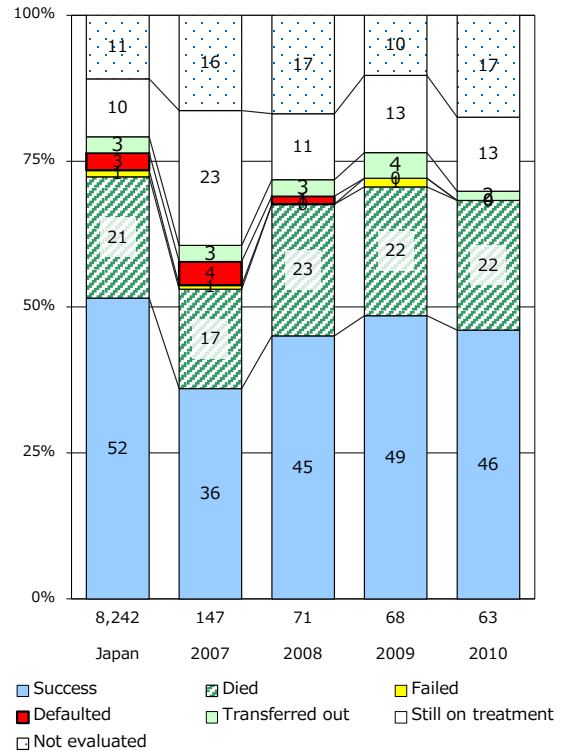


TB statistics in 2011		
Population	1,229,646	(Japan)
Foreign borns	10	4.7% (4.1%)
TB patients with homeless history	0	0.0% (1.4%)
Jobless TB patients getting public assistance, proportion among male TB patients aged 35-59 yrs	1	4.3% (10.6%)

Trends	'07	'08	'09	'10	'11
Notified cases	352	334	206	172	214
Rate per 100,000	18.0	17.1	16.6	13.8	17.4
Sputum smear pos. pul. cases	157	124	80	67	76
Rate per 100,000	8.0	6.4	6.5	5.4	6.2



Treatment outcomes of new sputum smear-pos. cases registered in 2007-2010



	'07	'08	'09	'10	'11	Year of registration	'07	'08	'09	'10	Japan
† Excluding unknown delay(%)	34.3	23.0	11.8	22.6	18.6	Median days of treatment (all forms)	281	274	281	275	(272)
# Excluding unknown Tx(%)	10.3	1.8	1.6	2.1	3.2	Median days of hospitalization (pul. TB)	77	98	66	78	(65)