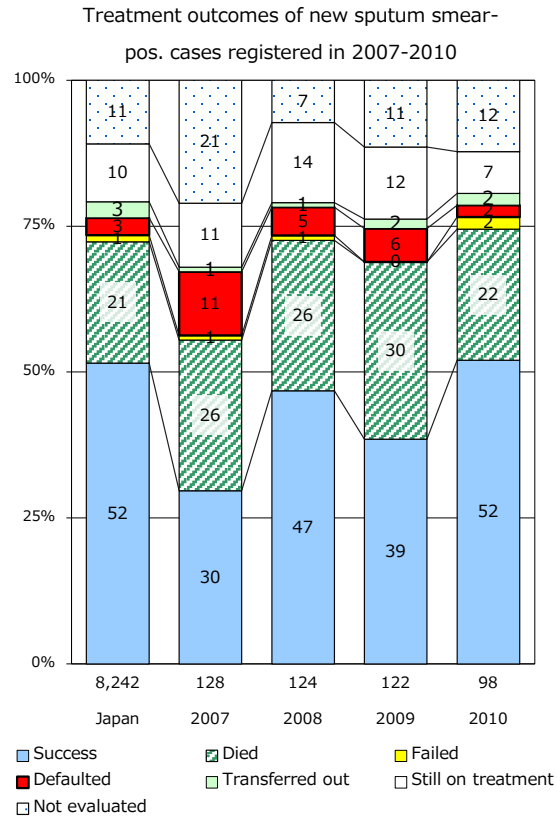
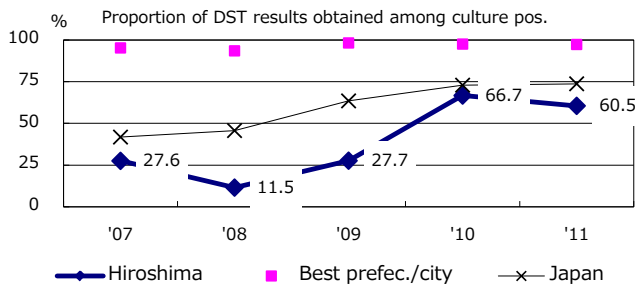
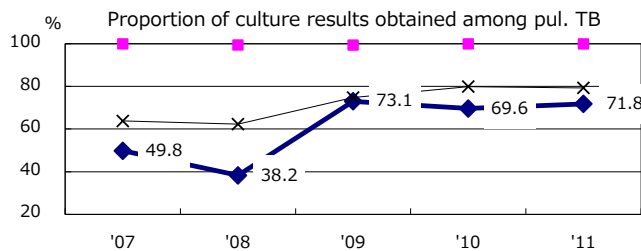
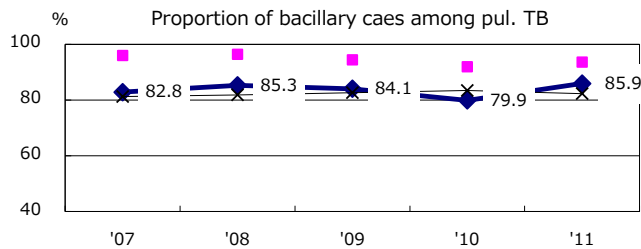
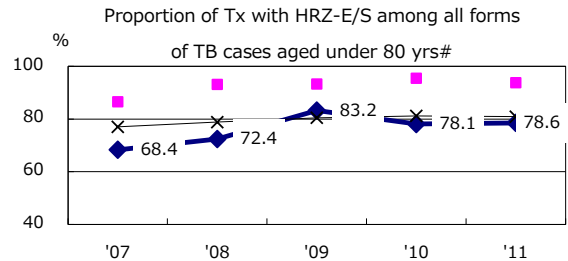
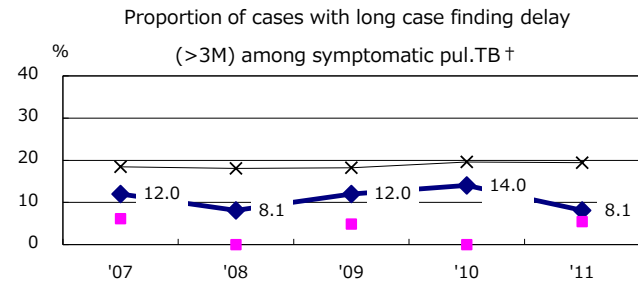
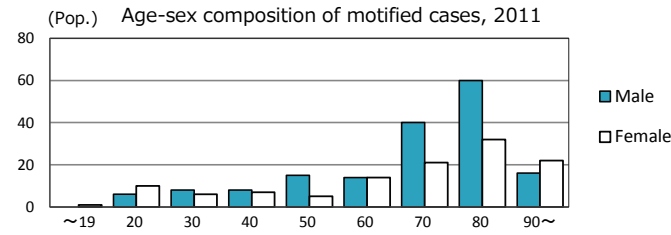
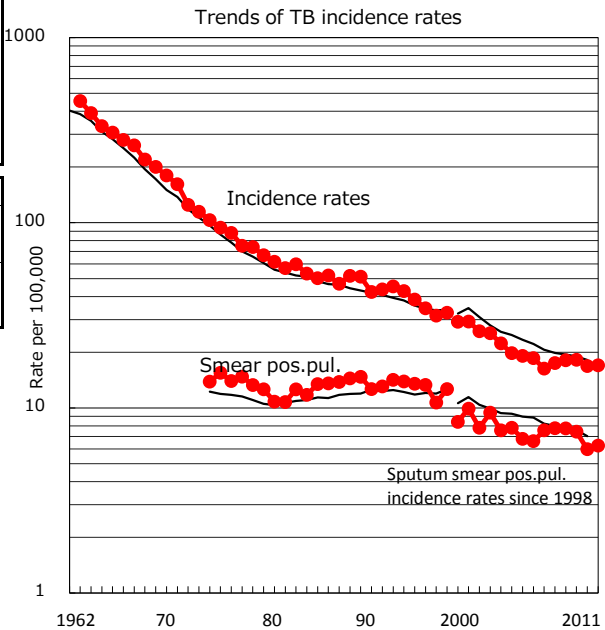


TB statistics in 2011		
Population	1,677,334	(Japan)
Foreign borns	17	6.0% (4.1%)
TB patients with homeless history	1	0.4% (1.4%)
Jobless TB patients getting public assistance, proportion among male TB patients aged 35-59 yrs	1	3.2% (10.6%)

Trends	'07	'08	'09	'10	'11
Notified cases	299	308	308	284	285
Rate per 100,000	17.5	18.1	18.2	16.8	17.0
Sputum smear pos. pul. cases	133	132	126	101	105
Rate per 100,000	7.8	7.8	7.4	6.0	6.3



	'07	'08	'09	'10	'11	Year of registration	'07	'08	'09	'10	Japan
† Excluding unknown delay(%)	41.9	58.4	72.7	61.7	75.7	Median days of treatment (all forms)	295	278	267	278	(272)
# Excluding unknown Tx(%)	4.3	6.1	1.5	1.8	0.6	Median days of hospitalization (pul. TB)	67	58	65	69	(65)