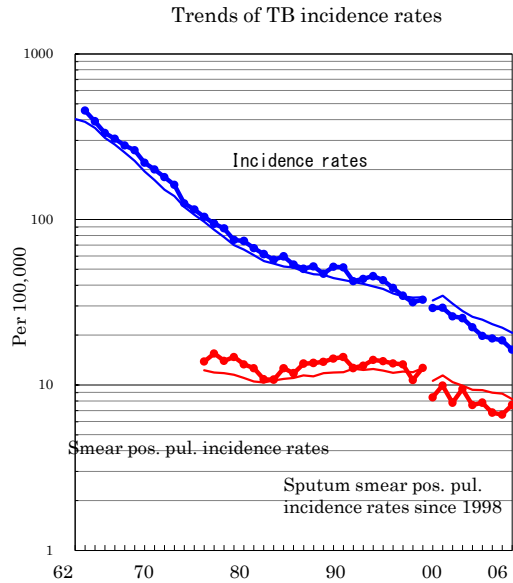
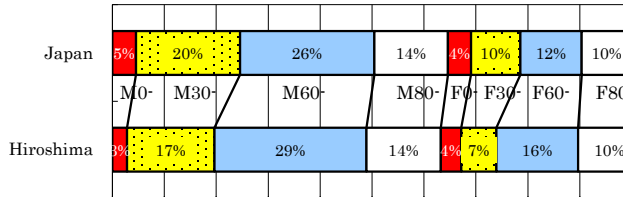


# Hiroshima

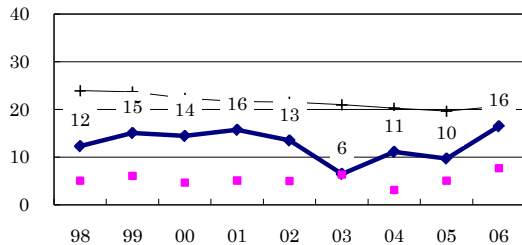
TB statistics in 2006		
Population	1,716,776	Hiroshima (Japan)
Foreigners' TB	15	5.4% (3.5%)
Estimated homeless TB among male cases aged 30-59 yrs	3	6.4% (8.9%)

Trends	02	03	04	05	06
Notified cases	389	344	331	320	280
Rate per 100,000	22.3	19.8	19.1	18.6	16.3
Sputum smear pos. pul. cases	132	136	118	114	130
Rate per 100,000	7.6	7.8	6.8	6.6	7.6

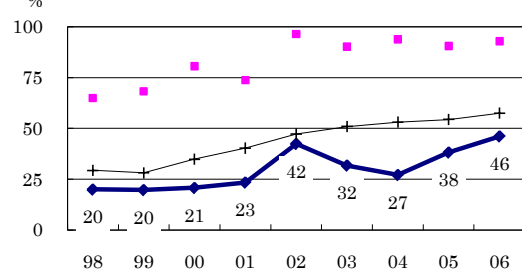
Age-sex composition of notified cases, 2006



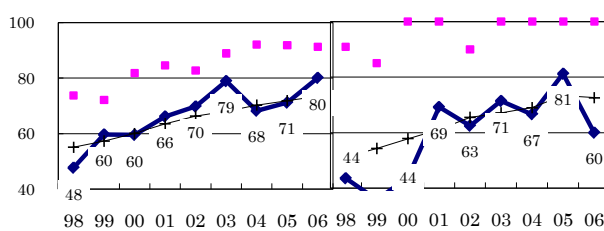
Proportion of cases with long diagnosis delay (>3M) among symptomatic pul. cases



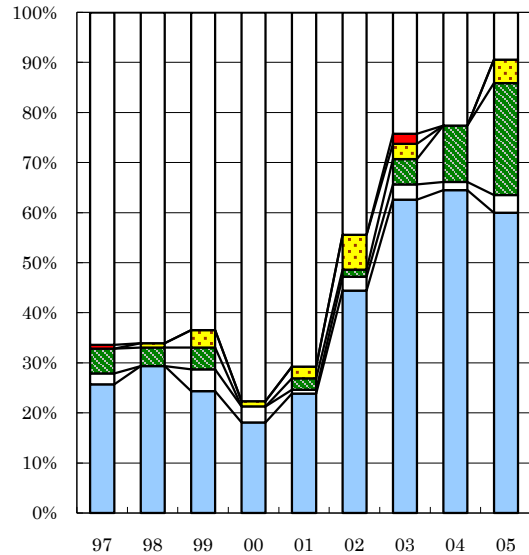
Proportion of positive or negative culture results among pulmonary cases



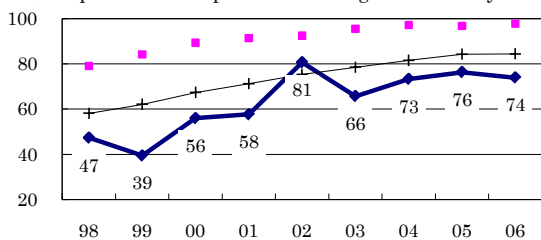
Proportion of bacillary cases among pulmonary cases



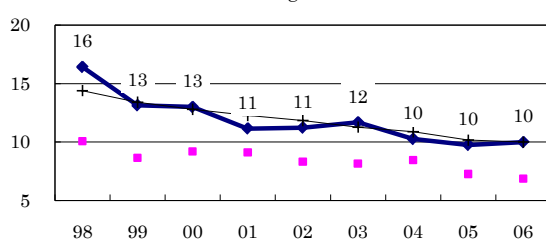
Treatment outcomes of new sputum smear-positive cases, 1997-2005 cohorts



Proportion of treatment with HRZ-E/S among new sputum smear-positive cases aged under 80 yrs



Estimated average treatment duration



Completed Others Died Failed Defaulted Unknown

	n	97	98	99	00	01	02	03	04	05
Completed	140	26	29	24	18	24	44	63	65	60
Others	109	2	0	4	3	1	3	3	2	4
Died	115	5	4	4	0	2	1	5	11	22
Failed	94	0	1	3	1	2	7	3	0	5
Defaulted	130	1	0	0	0	0	0	2	0	0
Unknown	72	66	66	63	78	71	44	24	23	9