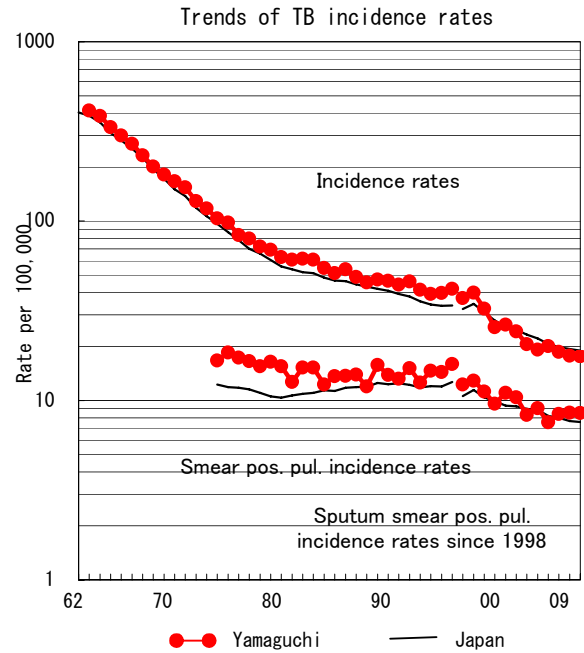
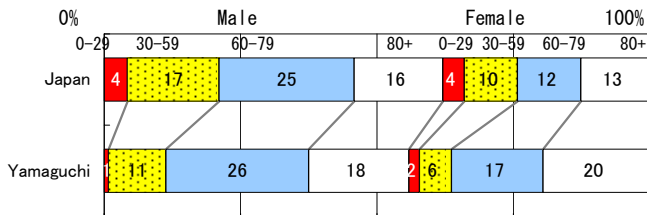


Yamaguchi

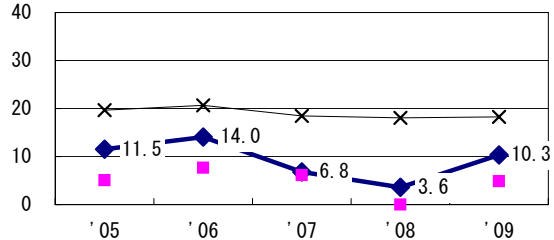
TB statistics in 2009		
Population	1,454,757	(Japan)
Foreigners	9	3.5% (3.9%)
Estimated homeless or poor TB among male cases aged 30-59 yrs	3	11.1% (12.0%)

Trends	'05	'06	'07	'08	'09
Notified cases	287	298	275	260	256
Rate per 100,000	19.2	20.1	18.7	17.8	17.6
Sputum smear pos. pul. cases	135	112	124	125	124
Rate per 100,000	9.0	7.6	8.4	8.5	8.5

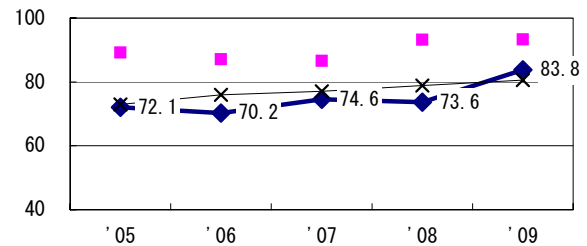
Age-sex composition of notified cases, 2009



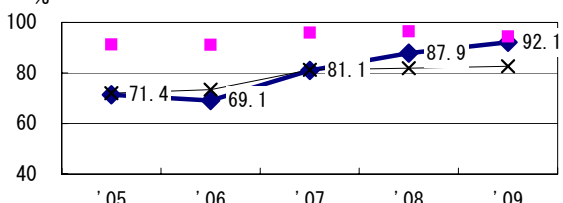
Proportion of cases with long case finding delay (>3M) among symptomatic pul. TB †



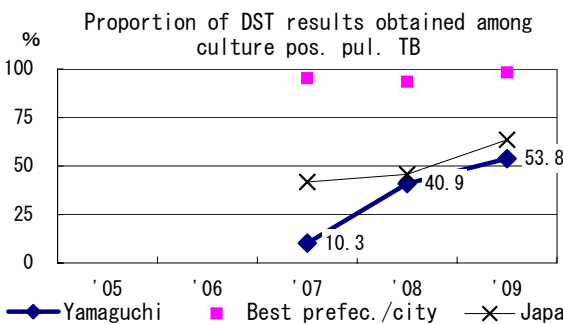
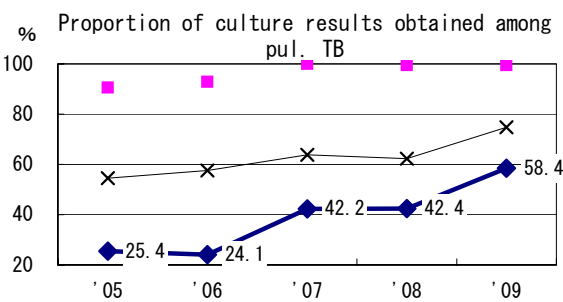
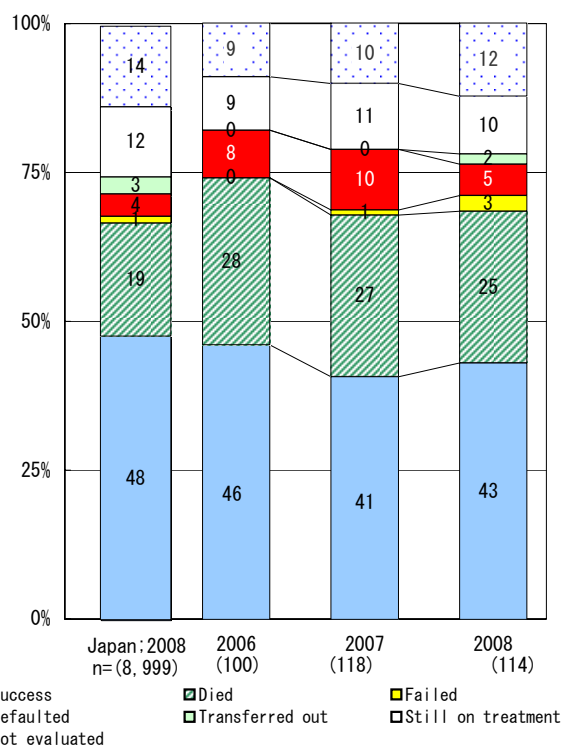
Proportion of Tx with HRZ-E/S among all forms of TB cases aged under 80 yrs ‡



Proportion of bacillary cases among pul. TB



Treatment outcomes of new sputum smear-pos. pul. cases registered in 2006-2008



	'05	'06	'07	'08	'09
† Excluding unk delay (%)	5.0	14.3	33.5	42.1	48.2
‡ Excluding unk Tx (%)	1.5	1.0	2.2	1.8	2.5

Registered year	'07	'08	Japan
Median days of treatment (all forms)	242	258	(272)
Median days of hospitalization (pul. TB)	78	79	(67)