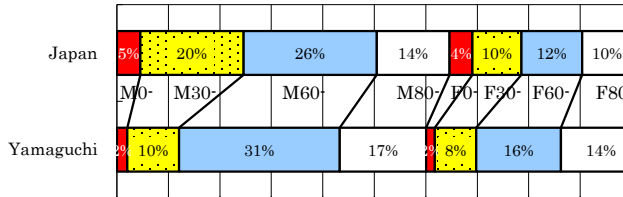


Yamaguchi

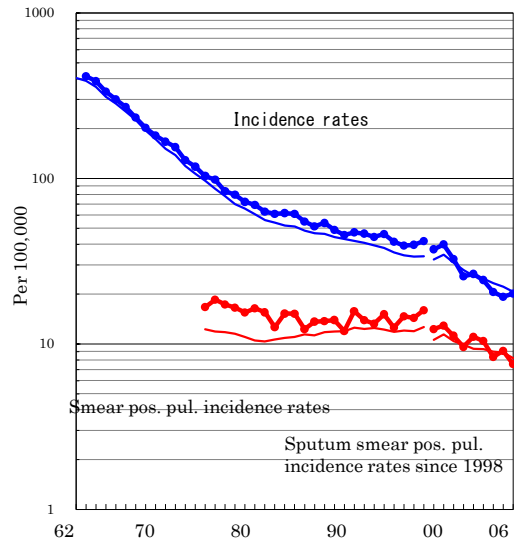
TB statistics in 2006		
Population	1,483,352	Yamaguchi (Japan)
Foreigners' TB	3	1.0% (3.5%)
Estimated homeless TB among male cases aged 30-59 yrs	0	0.0% (8.9%)

Trends	02	03	04	05	06
Notified cases	401	367	309	287	298
Rate per 100,000	26.4	24.3	20.5	19.2	20.1
Sputum smear pos. pul. cases	167	157	125	135	112
Rate per 100,000	11.0	10.4	8.3	9.0	7.6

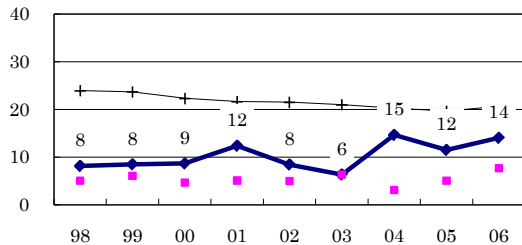
Age-sex composition of notified cases, 2006



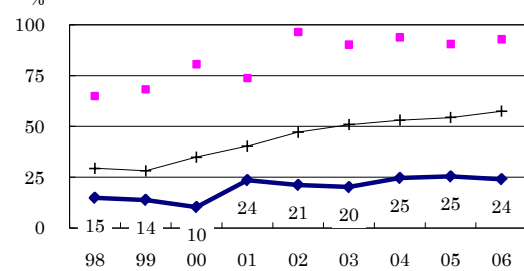
Trends of TB incidence rates



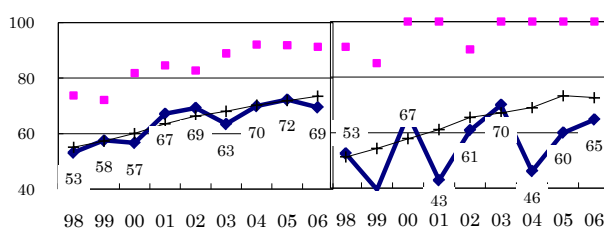
Proportion of cases with long diagnosis delay (>3M) among symptomatic pul. cases



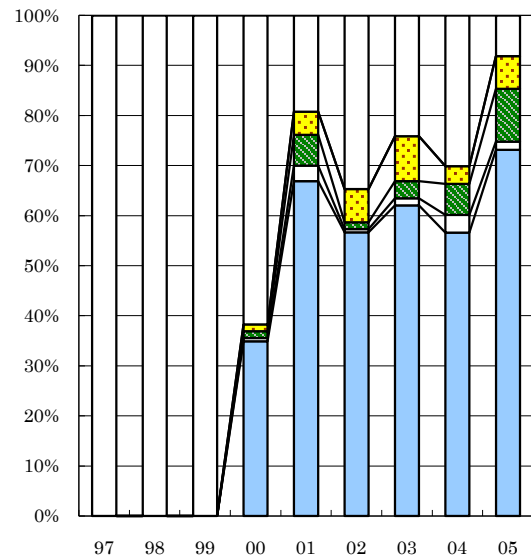
Proportion of positive or negative culture results among pulmonary cases



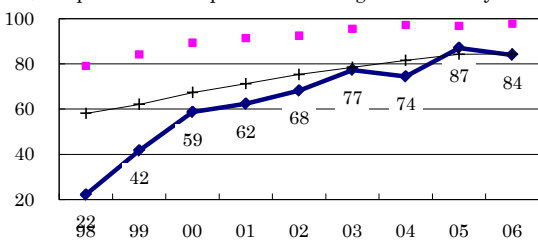
Proportion of bacillary cases among pulmonary cases



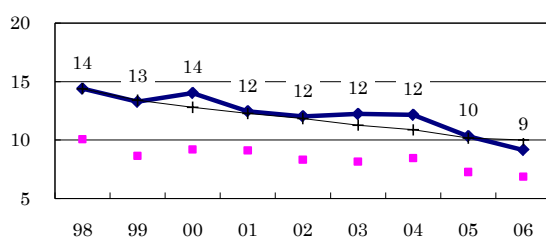
Treatment outcomes of new sputum smear-positive cases, 1997-2005 cohorts



Proportion of treatment with HRZ-E/S among new sputum smear-positive cases aged under 80 yrs



Estimated average treatment duration



—●— Yamaguchi —■— Best prefecture/city —+— Japan

■ Completed □ Others ■ Died ■ Failed ■ Defaulted □ Unknown

	n=	206	161	179	149	130	150	145	113	123
Completed	0	0	0	35	67	57	62	57	73	73
Others	0	0	0	1	3	1	1	4	2	2
Died	0	0	0	1	6	1	3	6	11	11
Failed	0	0	0	1	5	7	9	4	7	7
Defaulted	0	0	0	0	0	0	0	0	0	0
Unknown	100	100	100	62	19	35	24	30	8	8