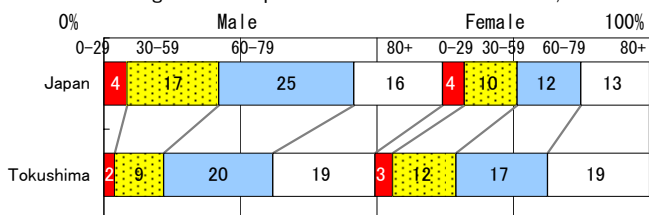


Tokushima

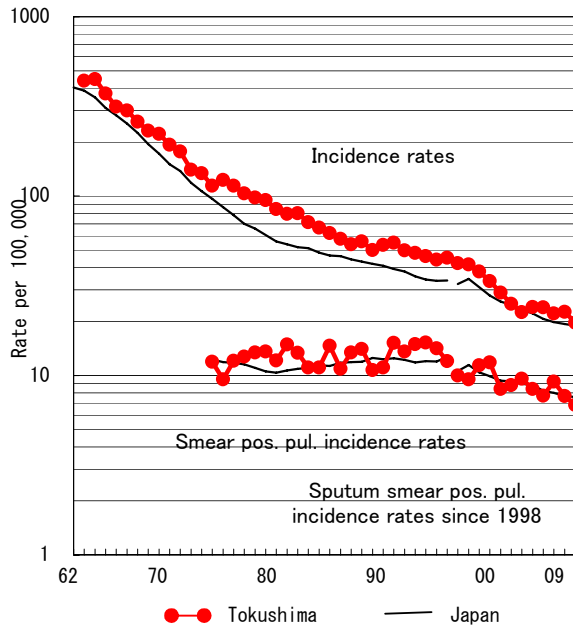
TB statistics in 2009		
Population	789,230	(Japan)
Foreigners	7	4.5% (3.9%)
Estimated homeless or poor TB among male cases aged 30-59 yrs	1	7.1% (12.0%)

Trends	'05	'06	'07	'08	'09
Notified cases	195	193	177	180	155
Rate per 100,000	24.1	24.0	22.1	22.7	19.6
Sputum smear pos. pul. cases	68	62	74	61	54
Rate per 100,000	8.4	7.7	9.3	7.7	6.8

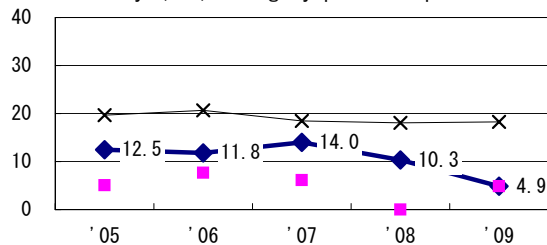
Age-sex composition of notified cases, 2009



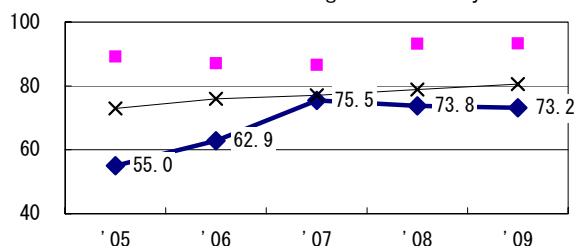
Trends of TB incidence rates



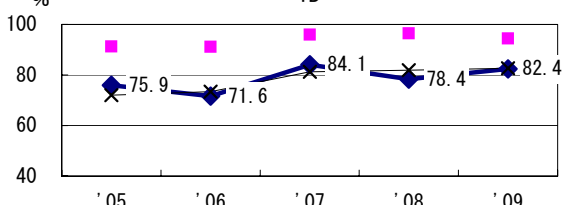
Proportion of cases with long case finding delay (>3M) among symptomatic pul. TB †



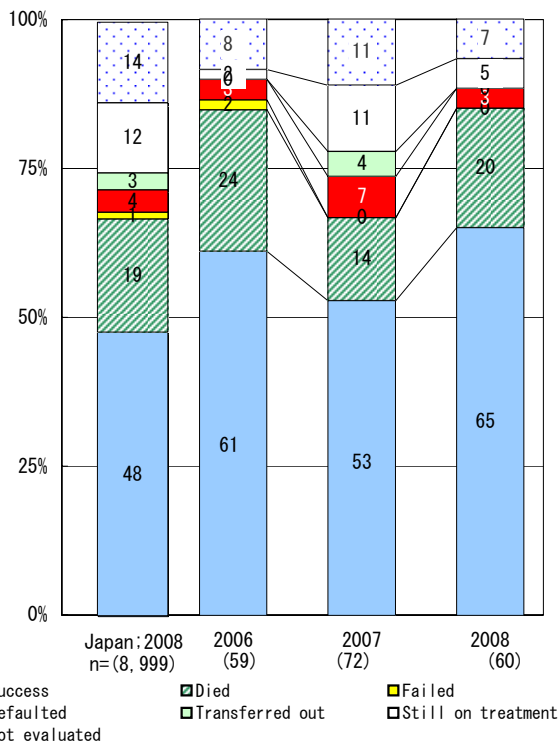
Proportion of Tx with HRZ-E/S among all forms of TB cases aged under 80 yrs ‡



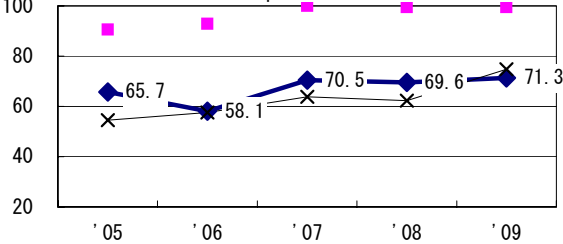
Proportion of bacillary cases among pul. TB



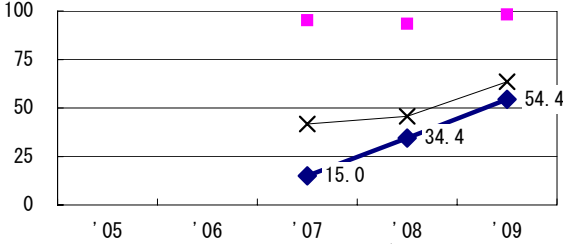
Treatment outcomes of new sputum smear-pos. pul. cases registered in 2006-2008



Proportion of culture results obtained among pul. TB



Proportion of DST results obtained among culture pos. pul. TB



	'05	'06	'07	'08	'09
† Excluding unk delay (%)	5.4	3.1	12.3	23.0	14.6
‡ Excluding unk Tx (%)	0.8	0.0	0.9	4.5	0.0

Registered year	'07	'08	Japan
Median days of treatment (all forms)	276	275	(272)
Median days of hospitalization (pul. TB)	70	71	(67)