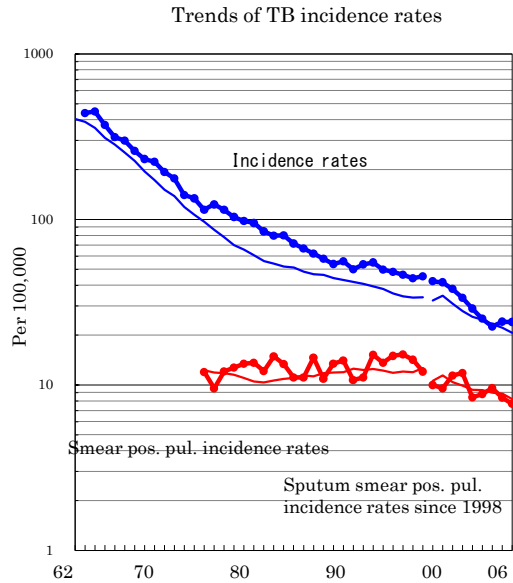
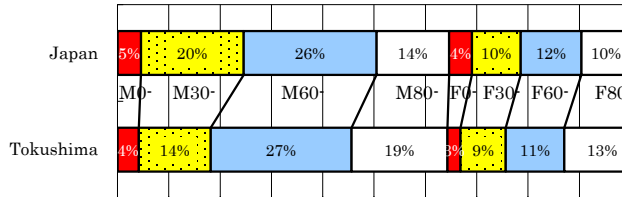


# Tokushima

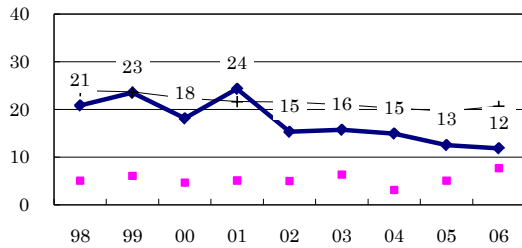
TB statistics in 2006		
Population	805,327	Tokushima (Japan)
Foreigners' TB	2	1.0% (3.5%)
Estimated homeless TB among male cases aged 30-59 yrs	0	0.0% (8.9%)

Trends	02	03	04	05	06
Notified cases	237	205	183	195	193
Rate per 100,000	28.9	25.1	22.5	24.1	24.0
Sputum smear pos. pul. cases	69	72	78	68	62
Rate per 100,000	8.4	8.8	9.6	8.4	7.7

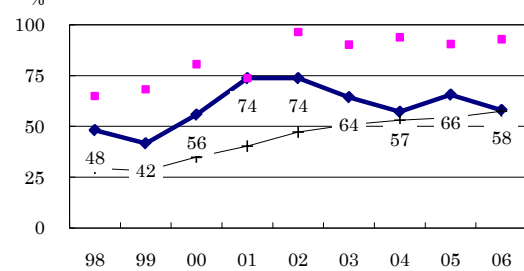
Age-sex composition of notified cases, 2006



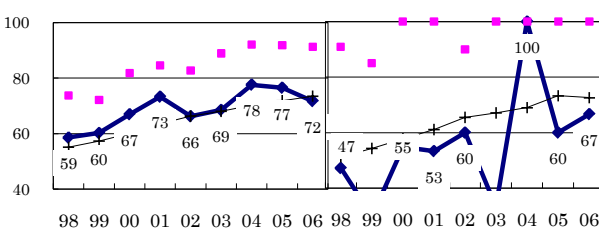
Proportion of cases with long diagnosis delay (>3M) among symptomatic pul. cases



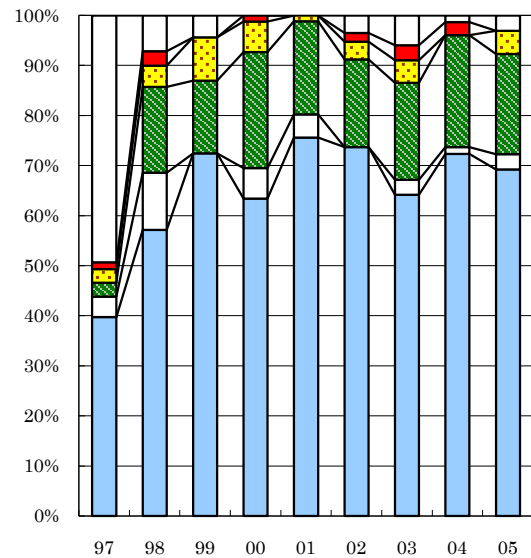
Proportion of positive or negative culture results among pulmonary cases



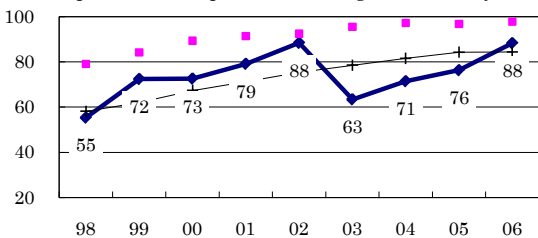
Proportion of bacillary cases among pulmonary cases



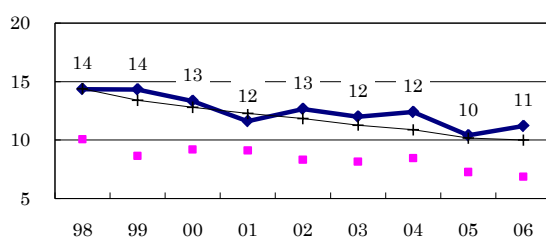
Treatment outcomes of new sputum smear-positive cases, 1997-2005 cohorts



Proportion of treatment with HRZ-E/S among new sputum smear-positive cases aged under 80 yrs



Estimated average treatment duration



Legend for Treatment Outcomes: Completed, Others, Died, Failed, Defaulted, Unknown

	n=	73	70	69	82	86	57	67	76	65
Completed	40	57	72	63	76	74	64	72	69	
Others	4	11	0	6	5	0	3	1	3	
Died	3	17	14	23	19	18	19	22	20	
Failed	3	4	9	6	1	4	4	0	5	
Defaulted	1	3	0	1	0	2	3	3	0	
Unknown	49	7	4	0	0	4	6	1	3	

Legend for Incidence Rates: Tokushima (blue diamond), Best prefecture/city (pink square), Japan (black plus)