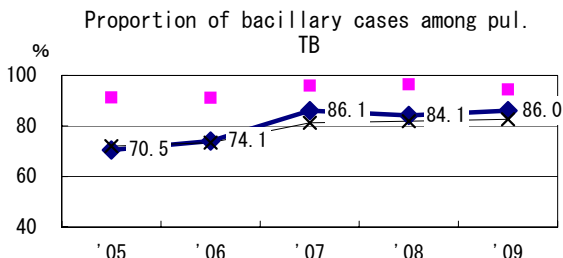
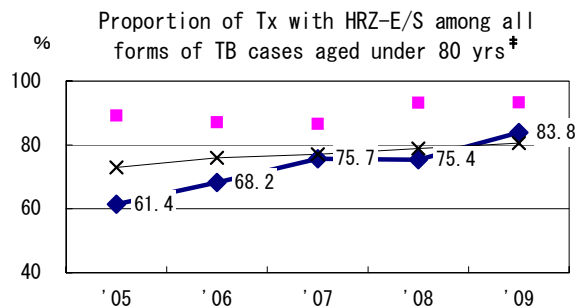
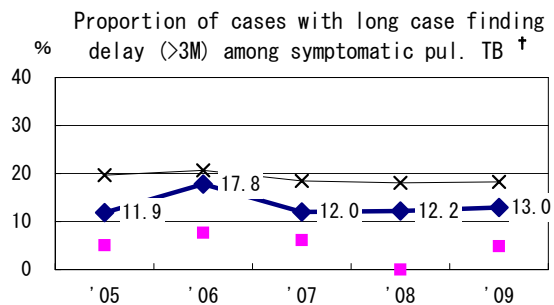
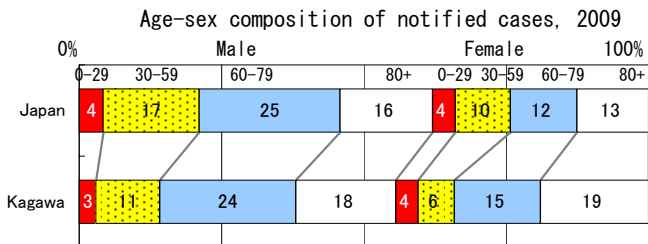
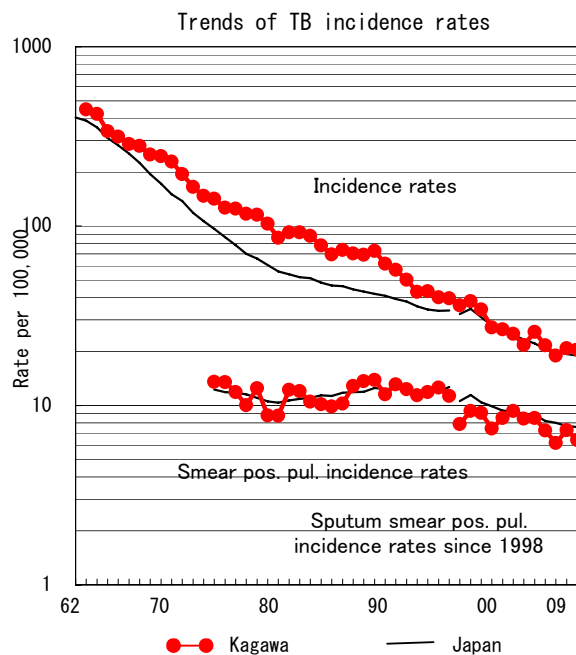
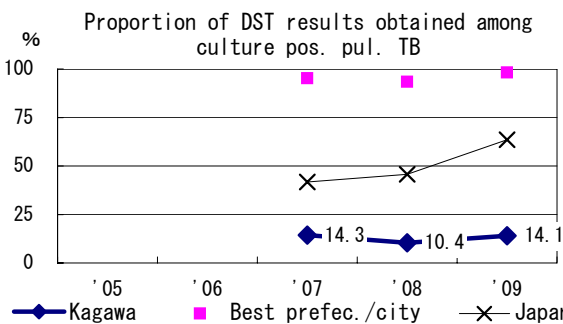
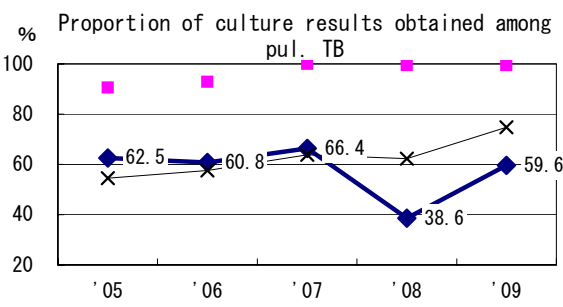
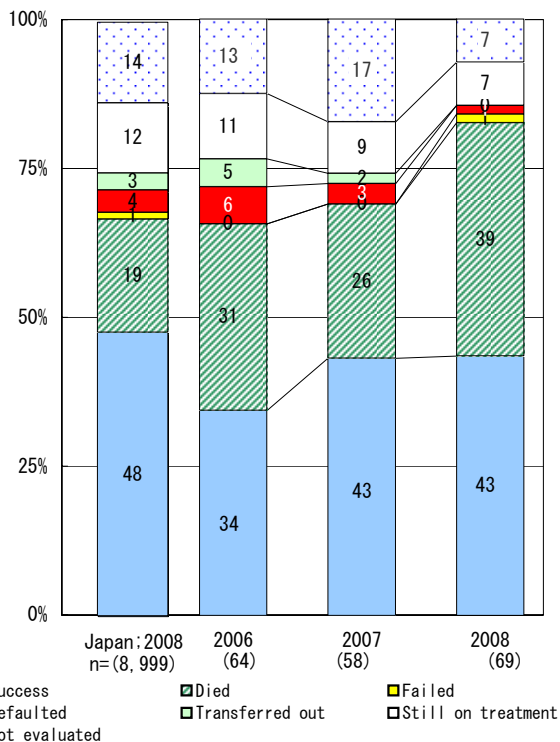


TB statistics in 2009		
Population	999,065	(Japan)
Foreigners	11	5.4% (3.9%)
Estimated homeless or poor TB among male cases aged 30-59 yrs	0	0.0% (12.0%)

Trends	'05	'06	'07	'08	'09
Notified cases	260	218	191	209	205
Rate per 100,000	25.7	21.6	19.0	20.8	20.5
Sputum smear pos. pul. cases	86	73	62	73	64
Rate per 100,000	8.5	7.2	6.2	7.3	6.4



Treatment outcomes of new sputum smear-pos. pul. cases registered in 2006-2008



	'05	'06	'07	'08	'09
† Excluding unk delay (%)	4.1	3.2	34.2	26.2	49.1
‡ Excluding unk Tx (%)	6.2	4.4	1.7	2.3	0.0

Registered year	'07	'08	Japan
Median days of treatment (all forms)	291	284	(272)
Median days of hospitalization (pul. TB)	47	52	(67)