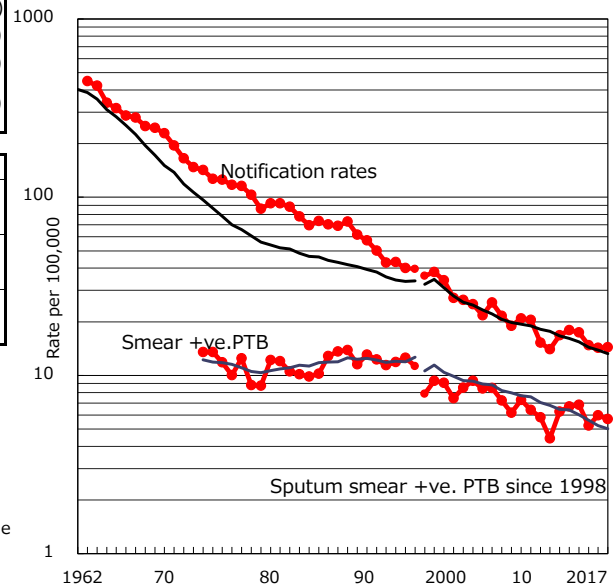


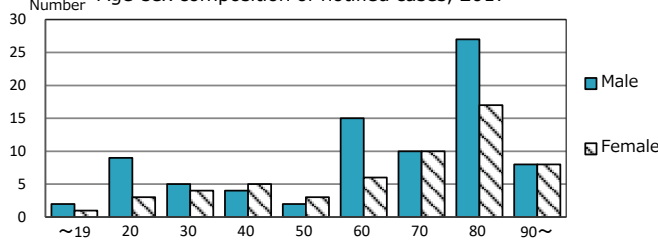
TB statistics in 2017 (Population in Kagawa 967,445)	
Among newly notified : (Japan)	
Foreign borns	18 12.9% (9.1%)
TB cases with homeless history	0 0.0% (0.9%)
Male aged 35-59,without job and receiving public assistance	0 0.0% (7.3%)

Trends	'13	'14	'15	'16	2017
Notified cases	177	171	144	138	139
Rate per 100,000 population	18.0	17.4	14.7	14.3	14.4
Sputum smear +ve. PTB	66	67	51	58	55
Rate per 100,000 population	6.7	6.8	5.2	6.0	5.7
Latent Tuberculosis Infection	30	27	44	25	23
Rate per 100,000 population	3.0	2.8	4.5	2.6	2.4

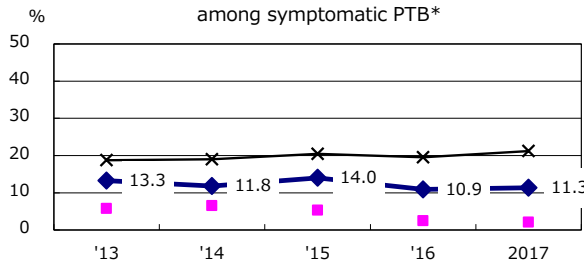
Trends of TB notification rates, all forms and smear +ve.PTB



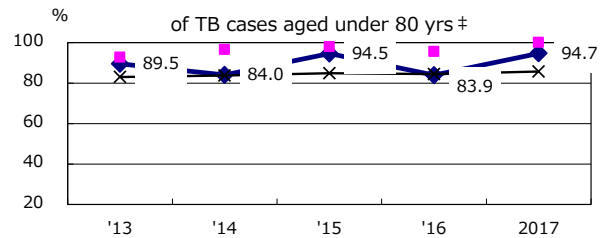
Age-sex composition of notified cases, 2017



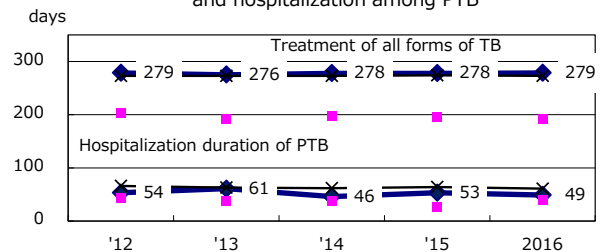
Proportion of cases with total diagnosis delay(> 3 mths) among symptomatic PTB*



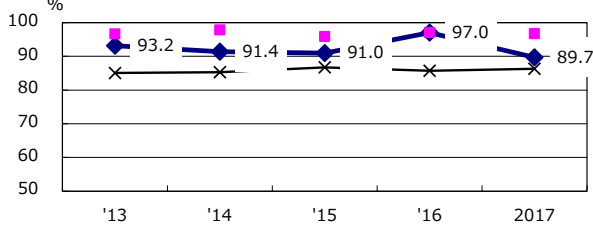
Proportion of TX with HRZ-E/S among all forms of TB cases aged under 80 yrs †



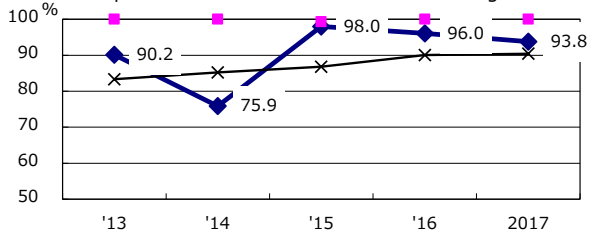
Median duration of treatment of all forms and hospitalization among PTB



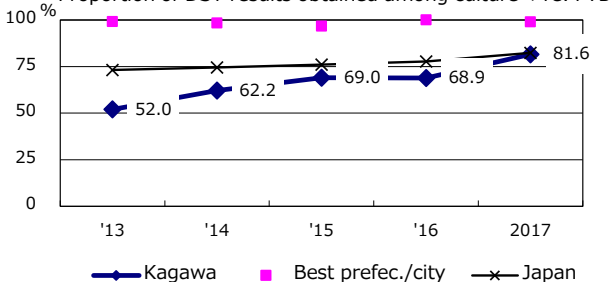
Proportion of Bacteriologically +ve. PTB



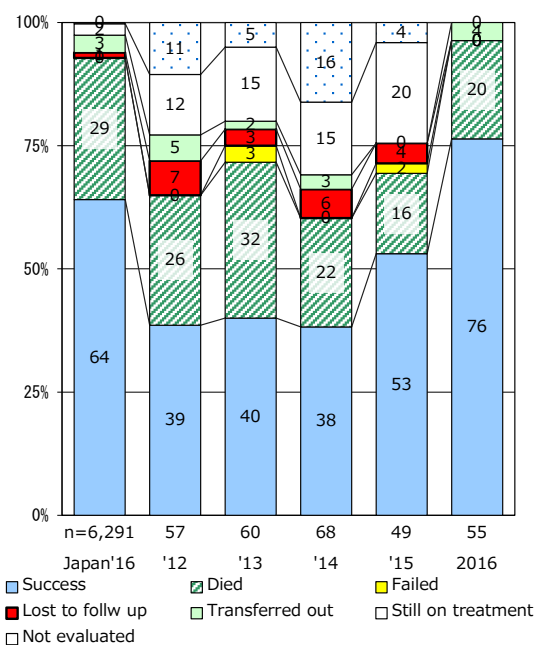
Proportion of culture results obtained among PTB



Proportion of DST results obtained among culture +ve. PTB



Treatment outcomes of new sputum smear +ve.TB



PTB : pulmonary TB

† Excluding unknown delay(%)	'13	'14	'15	'16	2017
	6.7	17.4	35.1	32.9	35.4

‡ Excluding unknown Tx(%)	'13	'14	'15	'16	2017
	1.3	2.1	3.9	0.0	5.1