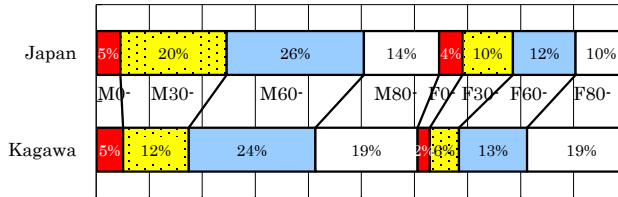


# Kagawa

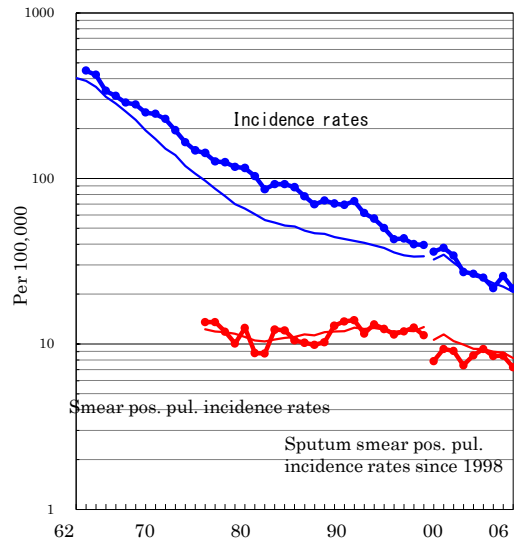
TB statistics in 2006		
Population	1,009,086	Kagawa (Japan)
Foreigners' TB	6	2.8% (3.5%)
Estimated homeless TB among male cases aged 30-59 yrs	0	0.0% (8.9%)

Trends	02	03	04	05	06
Notified cases	271	256	221	260	218
Rate per 100,000	26.6	25.1	21.7	25.7	21.6
Sputum smear pos. pul. cases	87	95	86	86	73
Rate per 100,000	8.5	9.3	8.4	8.5	7.2

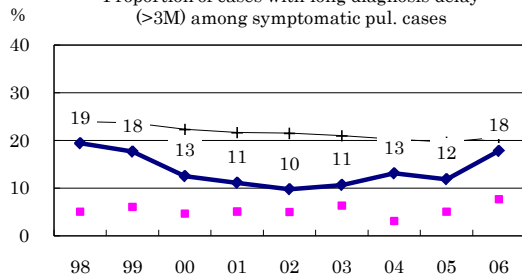
Age-sex composition of notified cases, 2006



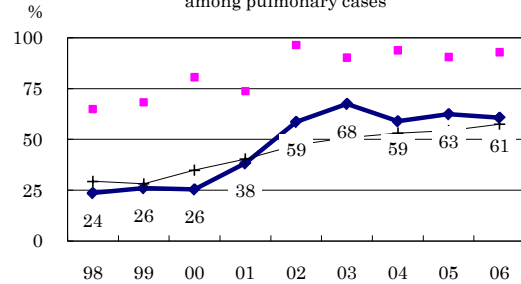
Trends of TB incidence rates



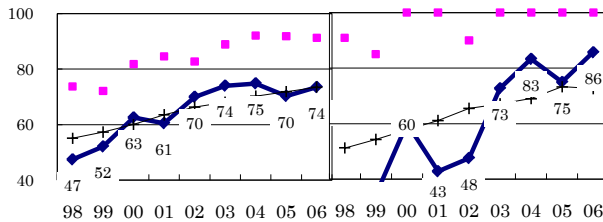
Proportion of cases with long diagnosis delay (>3M) among symptomatic pul. cases



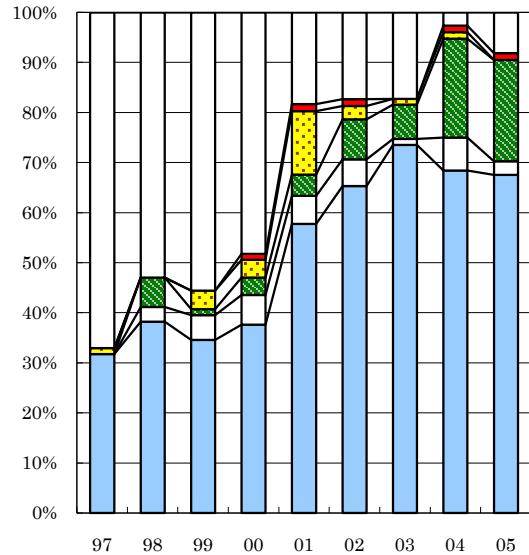
Proportion of positive or negative culture results among pulmonary cases



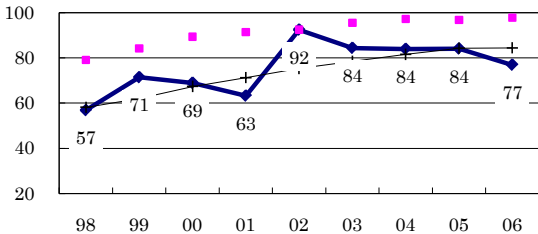
Proportion of bacillary cases among pulmonary cases



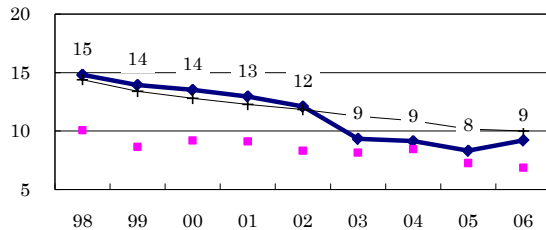
Treatment outcomes of new sputum smear-positive cases, 1997-2005 cohorts



Proportion of treatment with HRZ-E/S among new sputum smear-positive cases aged under 80 yrs



Estimated average treatment duration



Completed Others Died Failed Defaulted Unknown

	n=	85	68	81	85	71	75	87	76	74
Completed	32	38	35	38	58	65	74	68	68	68
Others	0	3	5	6	6	5	1	7	3	3
Died	0	6	1	4	4	8	7	20	20	20
Failed	1	0	4	4	13	3	1	1	0	0
Defaulted	0	0	0	1	1	1	0	1	1	1
Unknown	67	53	56	48	18	17	17	3	8	8