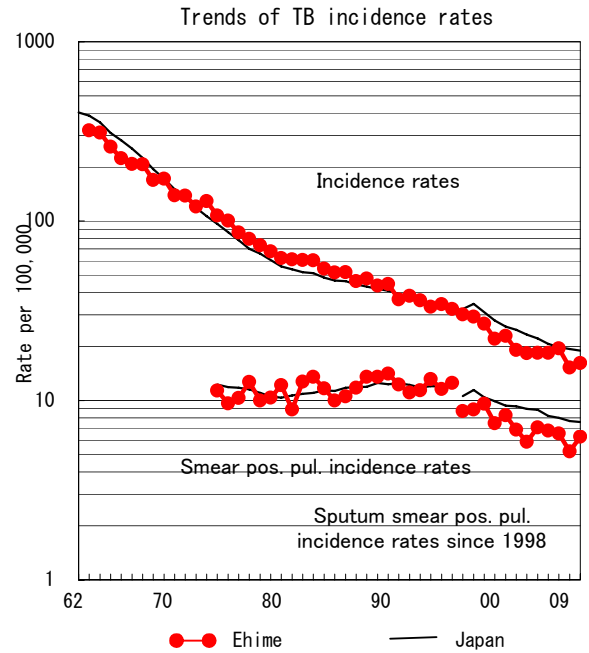
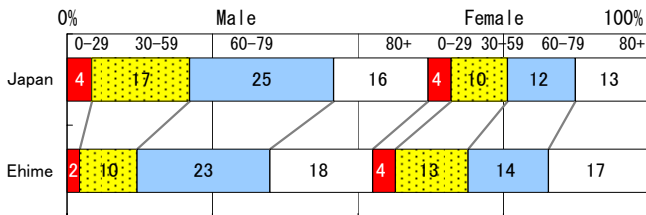


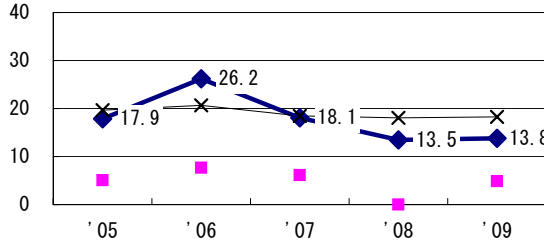
TB statistics in 2009		
Population	1,436,012	(Japan)
Foreigners	2	0.9% (3.9%)
Estimated homeless or poor TB among male cases aged 30-59 yrs	5	21.7% (12.0%)

Trends	'05	'06	'07	'08	'09
Notified cases	270	269	283	220	232
Rate per 100,000	18.4	18.4	19.5	15.2	16.2
Sputum smear pos. pul. cases	104	99	95	75	90
Rate per 100,000	7.1	6.8	6.5	5.2	6.3

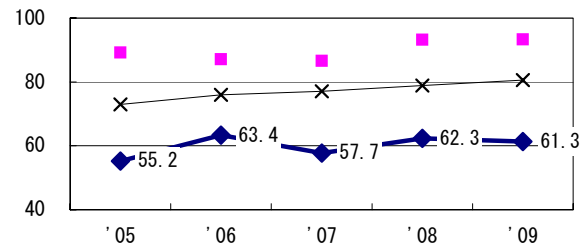
Age-sex composition of notified cases, 2009



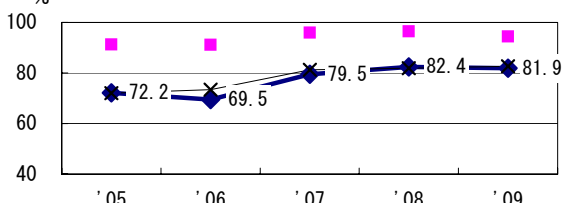
Proportion of cases with long case finding delay (>3M) among symptomatic pul. TB †



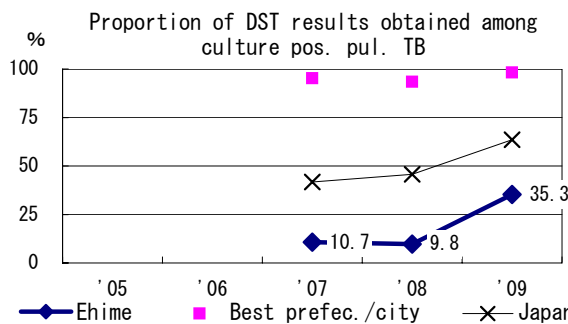
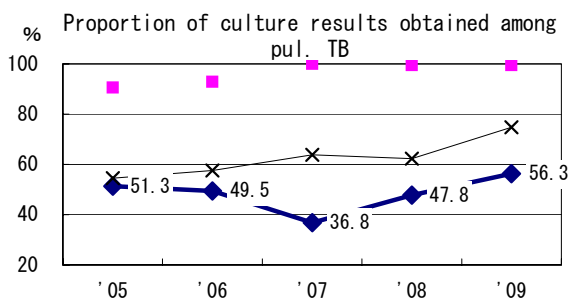
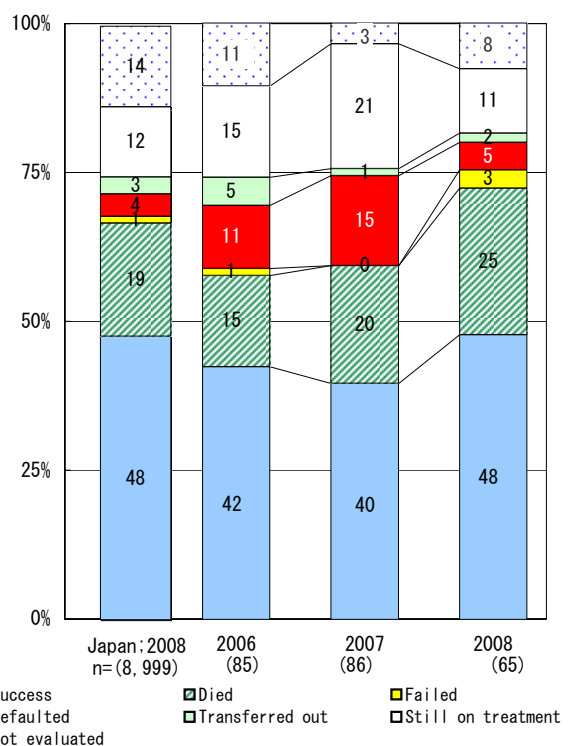
Proportion of Tx with HRZ-E/S among all forms of TB cases aged under 80 yrs ‡



Proportion of bacillary cases among pul. TB



Treatment outcomes of new sputum smear-pos. pul. cases registered in 2006-2008



	'05	'06	'07	'08	'09
† Excluding unk delay (%)	0.0	0.0	2.7	11.1	31.0
‡ Excluding unk Tx (%)	3.2	6.0	0.0	0.7	0.0

Registered year	'07	'08	Japan
Median days of treatment (all forms)	281	295	(272)
Median days of hospitalization (pul. TB)	43	46	(67)