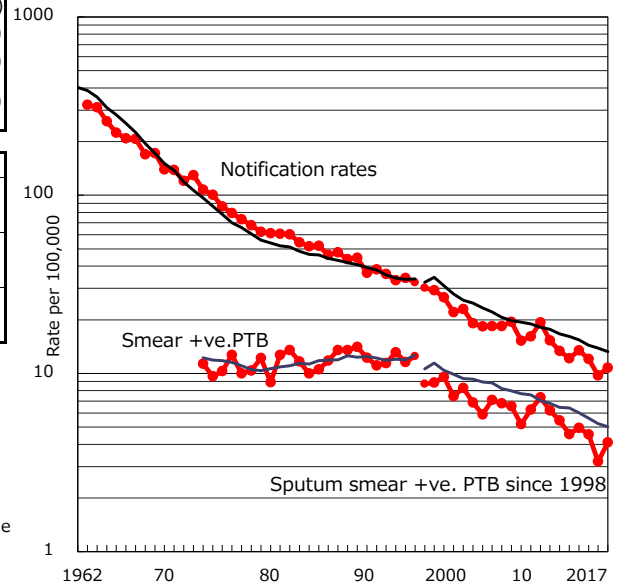


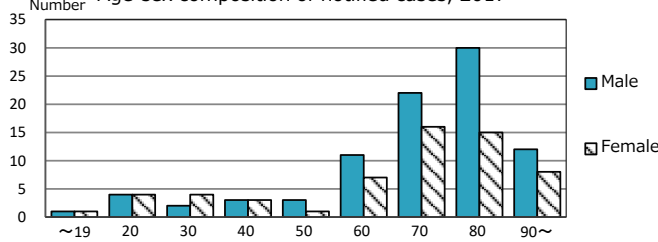
TB statistics in 2017 (Population in Ehime 1,364,071)	
Among newly notified :	(Japan)
Foreign borns	11 7.5% (9.1%)
TB cases with homeless history	1 0.7% (0.9%)
Male aged 35-59,without job and receiving public assistance	0 0.0% (7.3%)

Trends	'13	'14	'15	'16	2017
Notified cases	171	188	167	133	147
Rate per 100,000 population	12.2	13.5	12.1	9.8	10.8
Sputum smear +ve. PTB	64	69	63	44	56
Rate per 100,000 population	4.6	4.9	4.5	3.2	4.1
Latent Tuberculosis Infection	35	46	42	58	52
Rate per 100,000 population	2.5	3.3	3.0	4.3	3.8

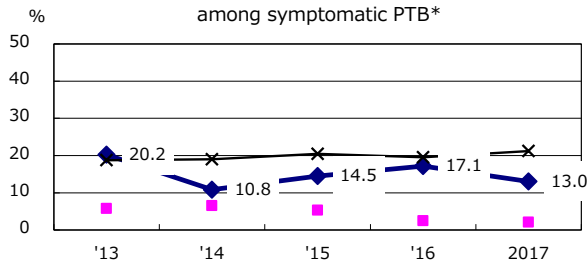
Trends of TB notification rates, all forms and smear +ve.PTB



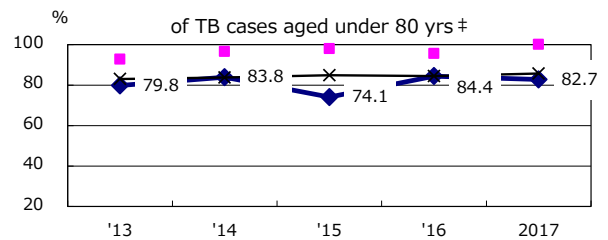
Age-sex composition of notified cases, 2017



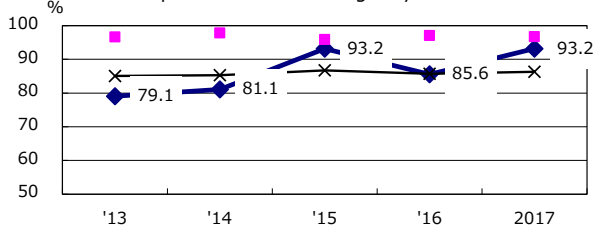
Proportion of cases with total diagnosis delay(> 3 mths) among symptomatic PTB*



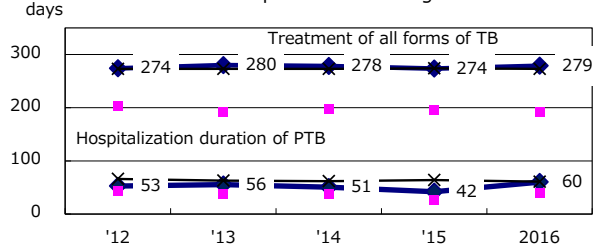
Proportion of TX with HRZ-E/S among all forms of TB cases aged under 80 yrs †



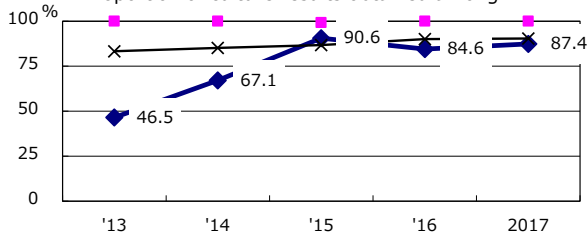
Proportion of Bacteriologically +ve. PTB



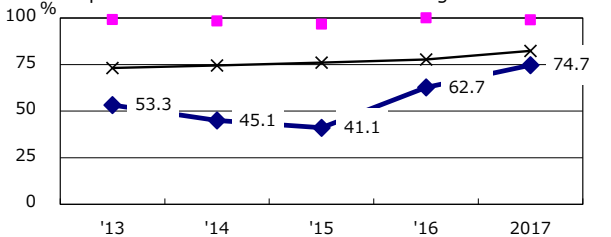
Median duration of treatment of all forms and hospitalization among PTB



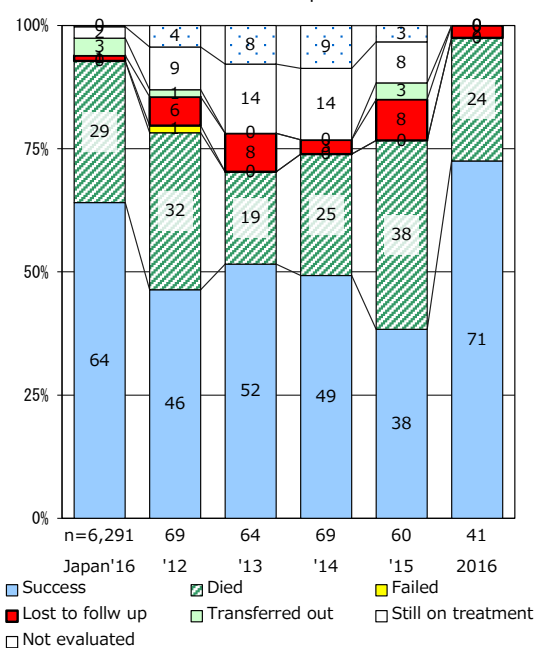
Proportion of culture results obtained among PTB



Proportion of DST results obtained among culture +ve. PTB



Treatment outcomes of new sputum smear +ve.TB



PTB : pulmonary TB

† Excluding unknown delay(%)	'13	'14	'15	'16	2017
	11.9	21.7	16.5	12.5	13.8

‡ Excluding unknown Tx(%)	'13	'14	'15	'16	2017
	1.0	2.0	2.4	3.0	1.2