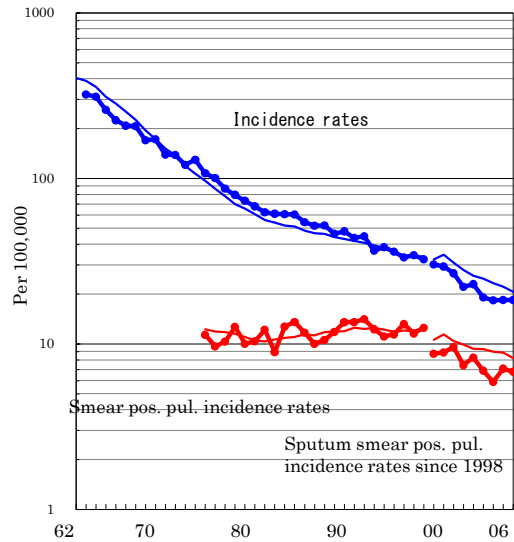


Ehime

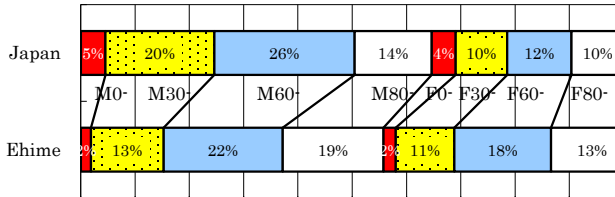
TB statistics in 2006		
Population	1,460,027	Ehime (Japan)
Foreigners' TB	7	2.6% (3.5%)
Estimated homeless TB among male cases aged 30-59 yrs	4	11.1% (8.9%)

Trends	02	03	04	05	06
Notified cases	341	283	271	270	269
Rate per 100,000	22.9	19.1	18.3	18.4	18.4
Sputum smear pos. pul. cases	123	102	87	104	99
Rate per 100,000	8.3	6.9	5.9	7.1	6.8

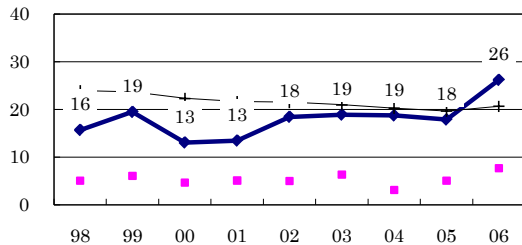
Trends of TB incidence rates



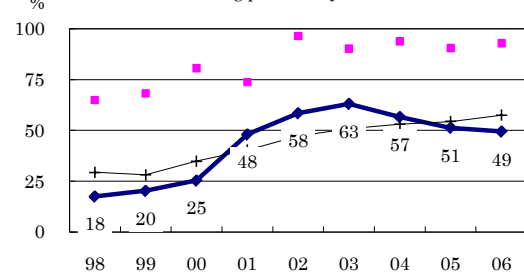
Age-sex composition of notified cases, 2006



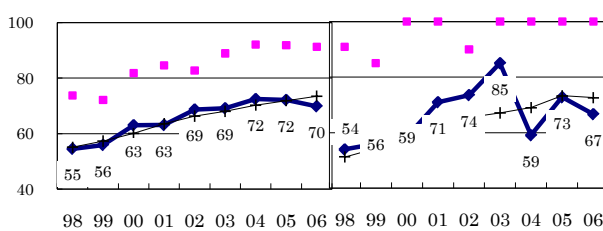
Proportion of cases with long diagnosis delay (>3M) among symptomatic pul. cases



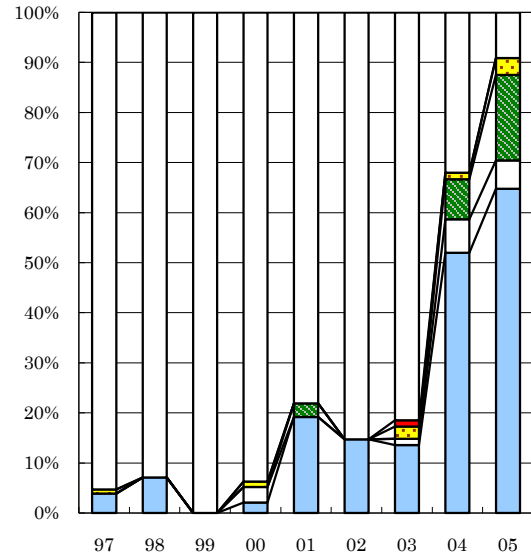
Proportion of positive or negative culture results among pulmonary cases



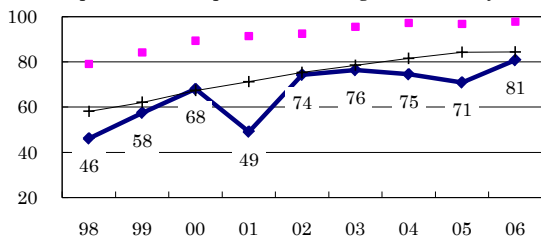
Proportion of bacillary cases among pulmonary cases



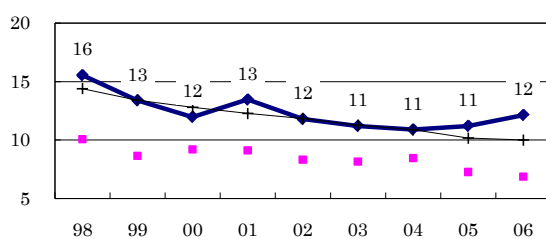
Treatment outcomes of new sputum smear-positive cases, 1997-2005 cohorts



Proportion of treatment with HRZ-E/S among new sputum smear-positive cases aged under 80 yrs



Estimated average treatment duration



Completed Others Died Failed Defaulted Unknown

	n=	128	99	90	96	73	95	81	75	89
Completed	4	7	0	2	19	15	14	52	64	
Others	0	0	0	3	0	0	1	7	6	
Died	0	0	0	0	3	0	0	8	17	
Failed	1	0	0	1	0	0	2	1	3	
Defaulted	0	0	0	0	0	0	1	0	0	
Unknown	95	93	100	94	78	85	81	32	9	