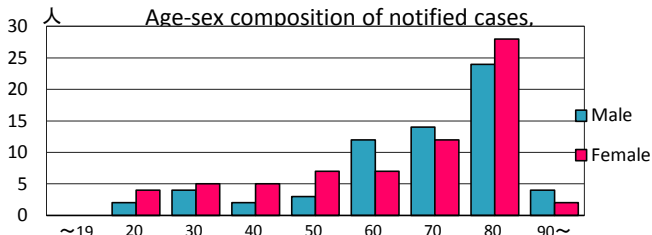
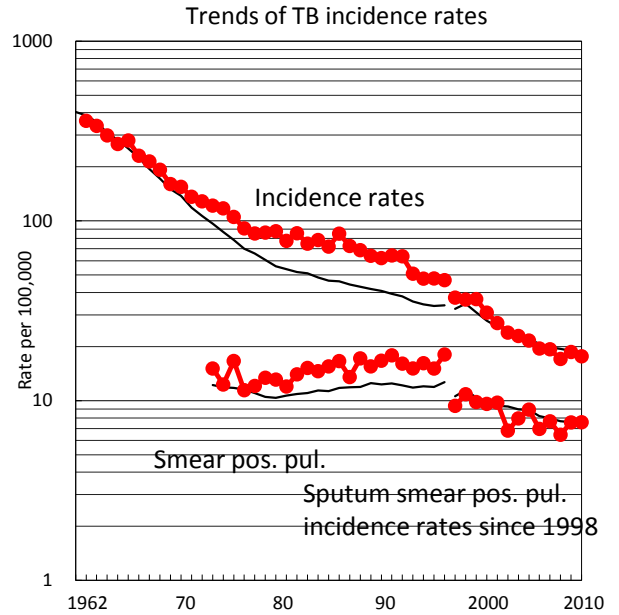
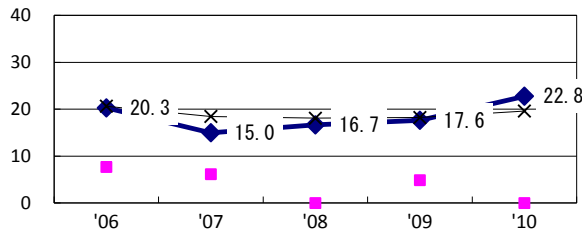


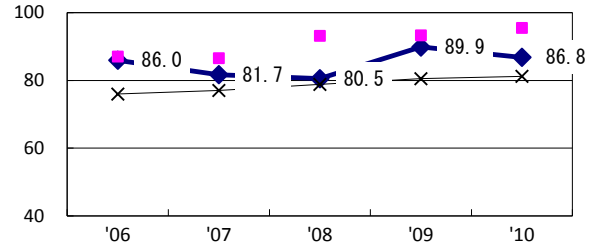
TB statistics in 2010					
Population	764,596			(Japan)	
Foreign borns	1	0.7%		(4.1%)	
TB patients with homeless history	0	0.0%		(1.4%)	
Jobless TB patients getting public assistance, proportion among male TB patients aged 35-59 yrs	1	11.1%		(10.8%)	
Trends	'06	'07	'08	'09	'10
Notified cases	154	151	132	143	135
Rate per 100,000	19.5	19.3	17.1	18.7	17.7
Sputum smear pos. pul. cases	55	60	50	58	58
Rate per 100,000	7.0	7.7	6.5	7.6	7.6



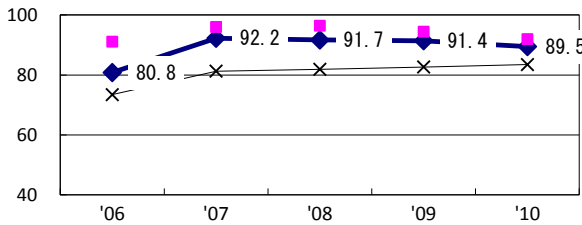
Proportion of cases with long case finding delay (>3M) among symptomatic pul. TB †



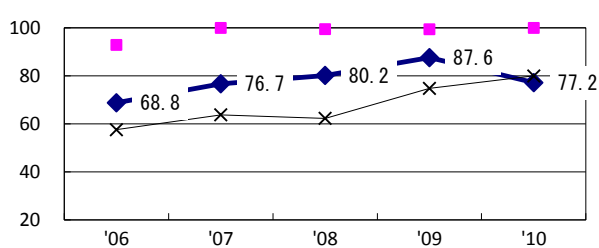
Proportion of Tx with HRZ-E/S among all forms of TB cases aged under 80 yrs*



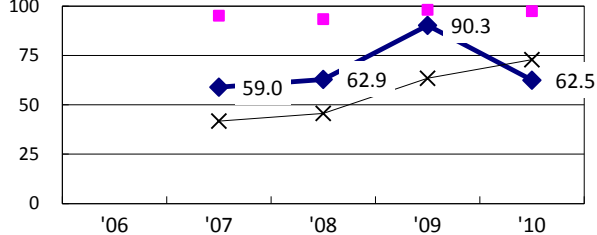
Proportion of bacillary cases among pul. TB



Proportion of culture results obtained among pul. TB

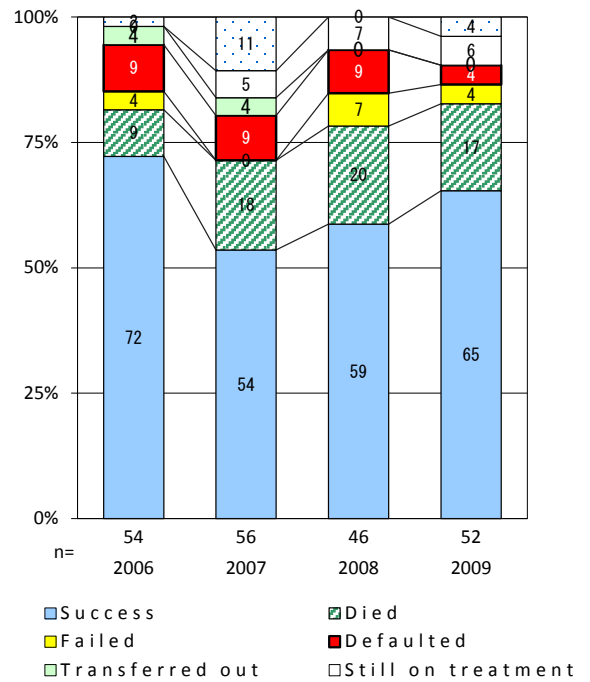


Proportion of DST results obtained among culture pos. pul. TB



◆ Kochi ■ Best prefec./city × Japan

Treatment outcomes of new sputum smear-pos. pul. cases registered in 2006-2009



†Excluding unknown delay(%)	2.8	36.2	28.0	3.4	10.2	Year of registration	'07	'08	'09	Japan
‡Excluding unknown Tx (%)	1.8	0.0	0.0	0.0	1.3	Median days of treatment (all forms)	212	207	222	(270)
						Median days of hospitalization (pul.TB)	49	57	64	(68)