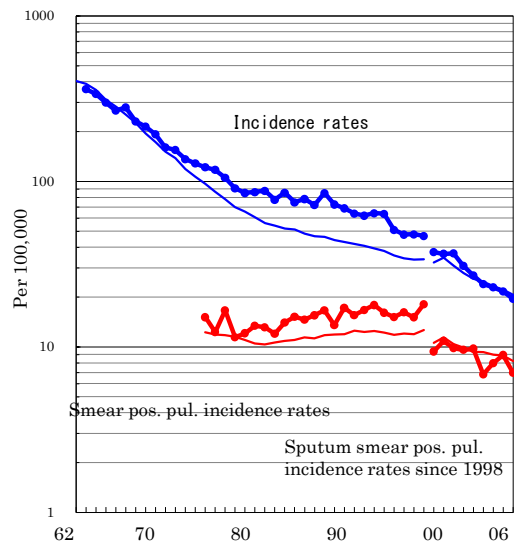


Kochi

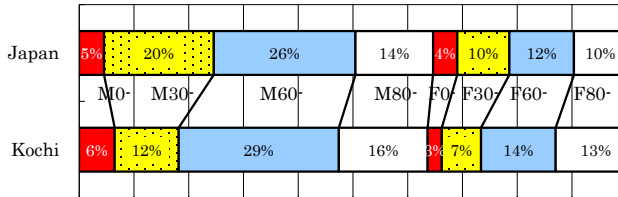
TB statistics in 2006		
Population	789,450	Kochi (Japan)
Foreigners' TB	2	1.3% (3.5%)
Estimated homeless TB among male cases aged 30-59 yrs	1	5.6% (8.9%)

Trends	02	03	04	05	06
Notified cases	219	193	184	172	154
Rate per 100,000	27.0	23.9	22.9	21.6	19.5
Sputum smear pos. pul. cases	79	55	64	71	55
Rate per 100,000	9.7	6.8	8.0	8.9	7.0

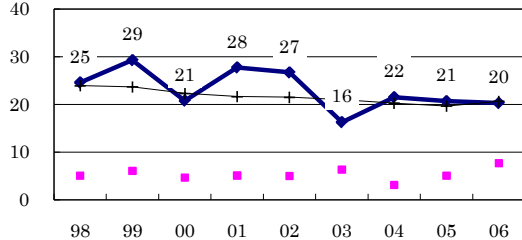
Trends of TB incidence rates



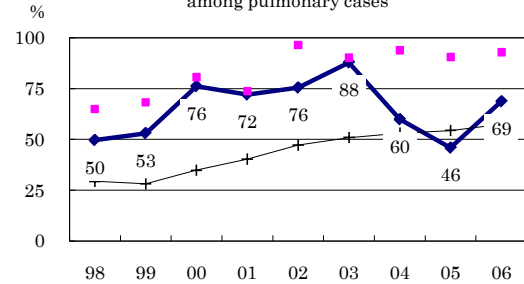
Age-sex composition of notified cases, 2006



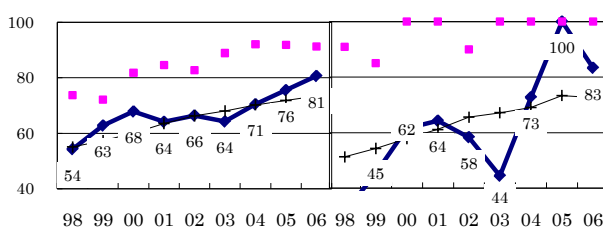
Proportion of cases with long diagnosis finding delay (>3M) among symptomatic pul. cases



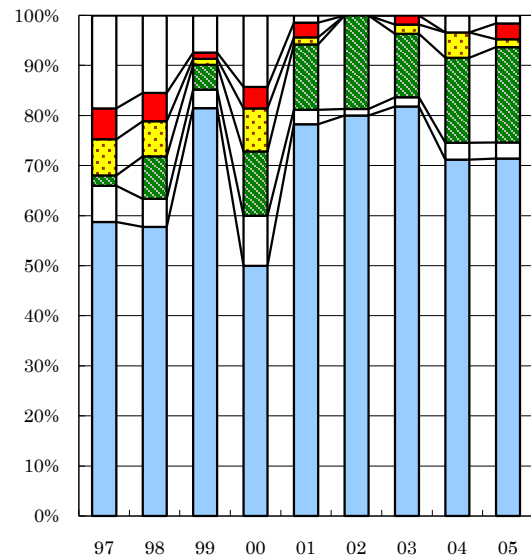
Proportion of positive or negative culture results among pulmonary cases



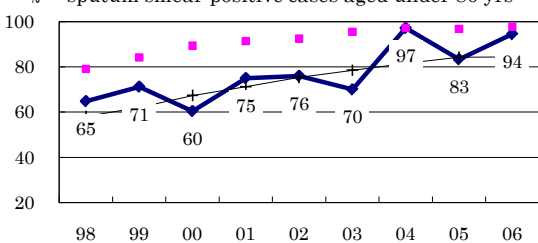
Proportion of bacillary cases among pulmonary cases



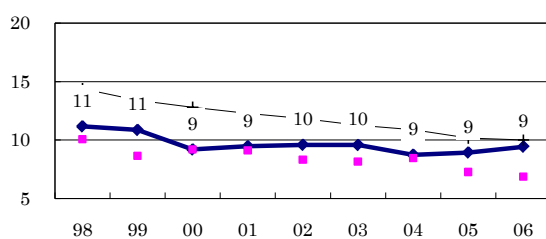
Treatment outcomes of new sputum smear-positive cases, 1997-2005 cohorts



Proportion of treatment with HRZ-E/S among new sputum smear-positive cases aged under 80 yrs



Estimated average treatment duration



Completed Others Died Failed Defaulted Unknown

	n=	97	71	81	70	69	75	55	59	63
Completed	59	58	81	50	78	80	82	71	71	71
Others	7	6	4	10	3	1	2	3	3	3
Died	2	8	5	13	13	19	13	17	19	19
Failed	7	7	1	9	1	0	2	5	2	2
Defaulted	6	6	1	4	3	0	2	0	3	3
Unknown	19	15	7	14	1	0	0	3	2	2