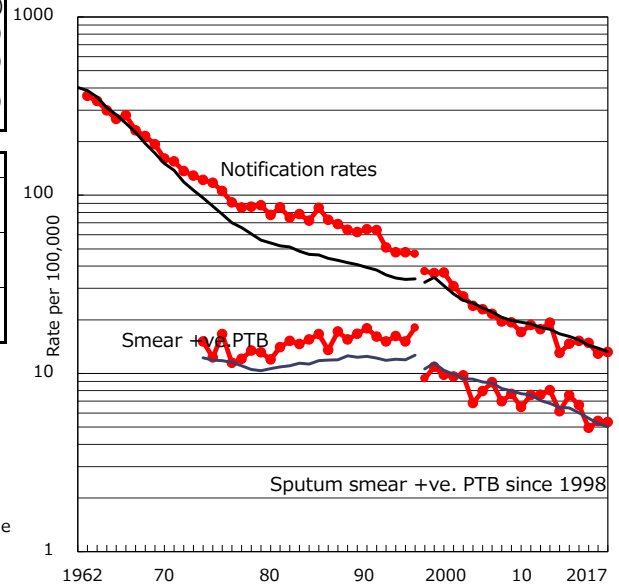


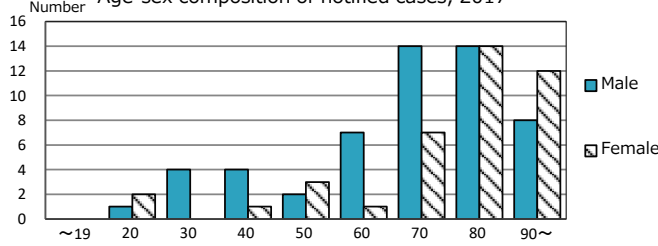
TB statistics in 2017 ( Population in Kouchi 713,688 )	
Among newly notified : (Japan)	
Foreign borns	5 5.3% (9.1%)
TB cases with homeless history	0 0.0% (0.9%)
Male aged 35-59, without job and receiving public assistance	0 0.0% (7.3%)

Trends	'13	'14	'15	'16	2017
Notified cases	109	112	108	92	94
Rate per 100,000 population	14.6	15.2	14.8	12.9	13.2
Sputum smear +ve. PTB	56	49	36	39	38
Rate per 100,000 population	7.5	6.6	4.9	5.5	5.3
Latent Tuberculosis Infection	10	18	9	26	11
Rate per 100,000 population	1.3	2.4	1.2	3.6	1.5

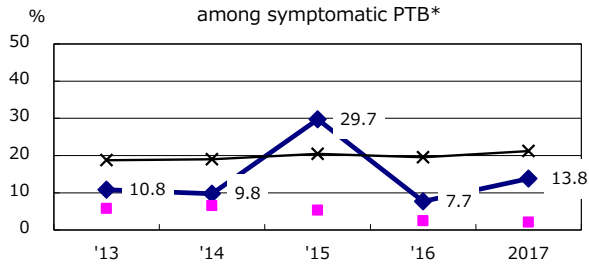
Trends of TB notification rates, all forms and smear +ve.PTB



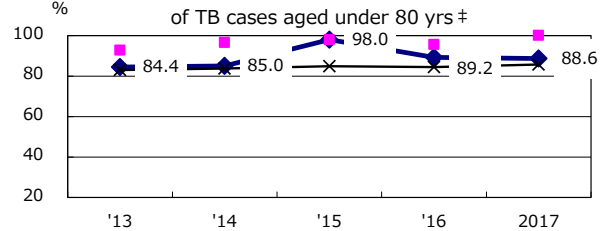
Age-sex composition of notified cases, 2017



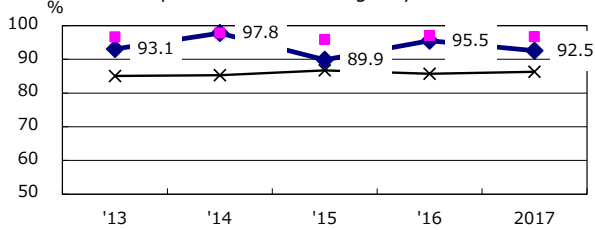
Proportion of cases with total diagnosis delay (> 3 mths) among symptomatic PTB\*



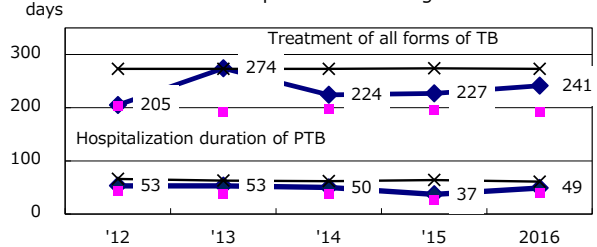
Proportion of TX with HRZ-E/S among all forms



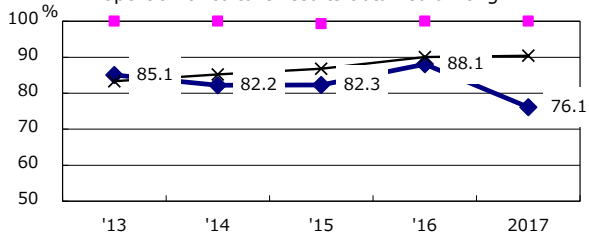
Proportion of Bacteriologically +ve. PTB



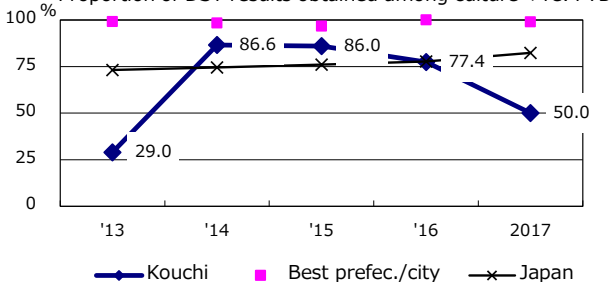
Median duration of treatment of all forms and hospitalization among PTB



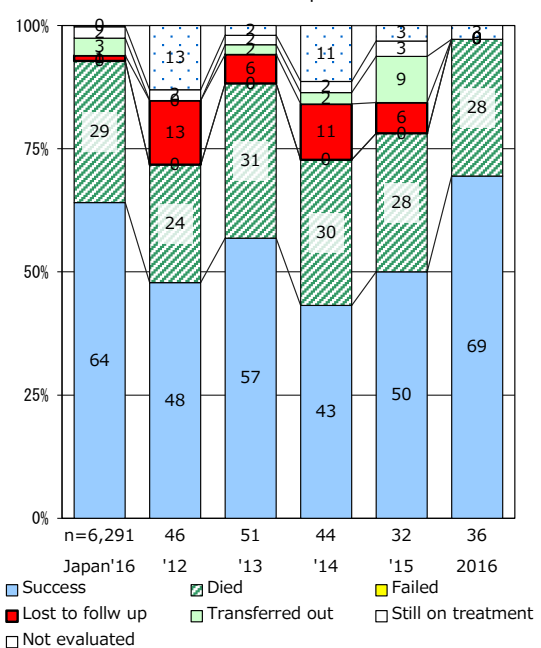
Proportion of culture results obtained among PTB



Proportion of DST results obtained among culture +ve. PTB



Treatment outcomes of new sputum smear +ve.TB



PTB : pulmonary TB

† Excluding unknown delay(%)	'13	'14	'15	'16	2017
	51.3	45.3	39.3	25.0	46.3

‡ Excluding unknown Tx(%)	'13	'14	'15	'16	2017
	2.2	1.6	0.0	0.0	4.3