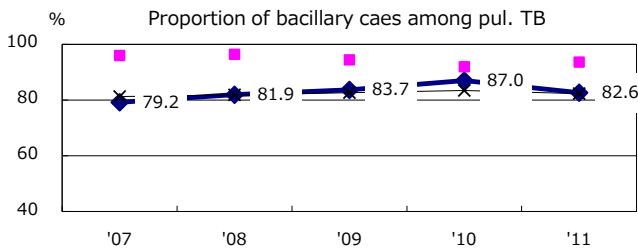
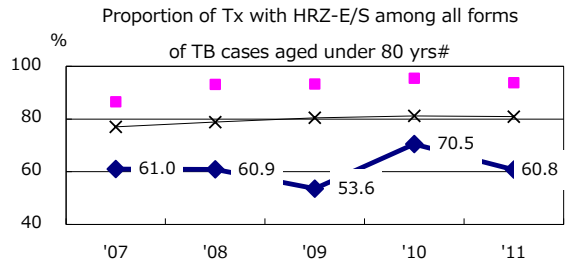
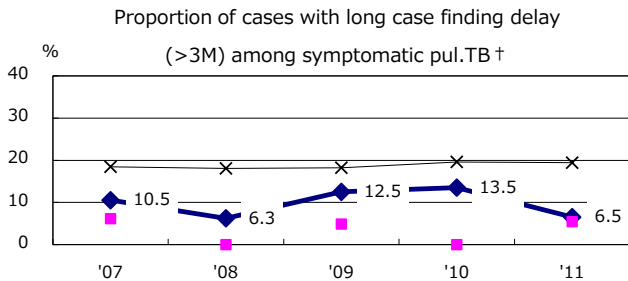
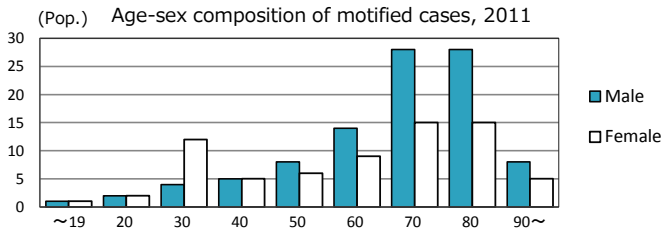
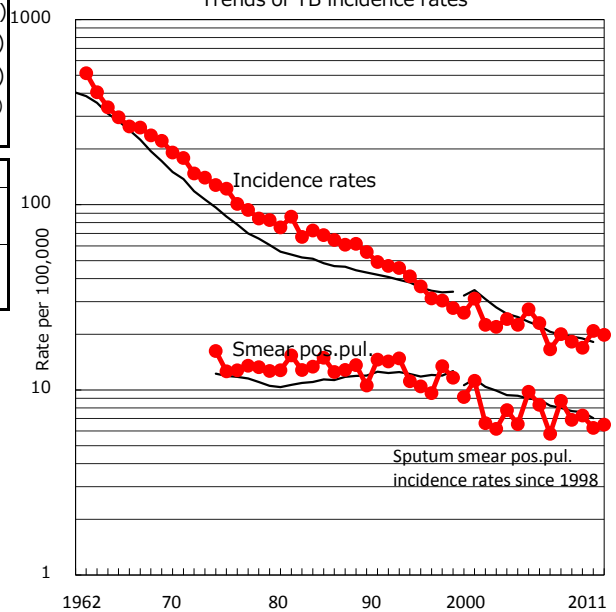
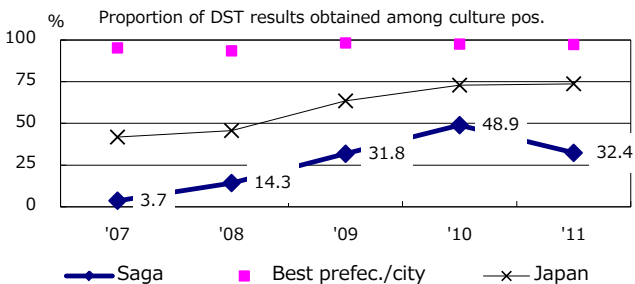
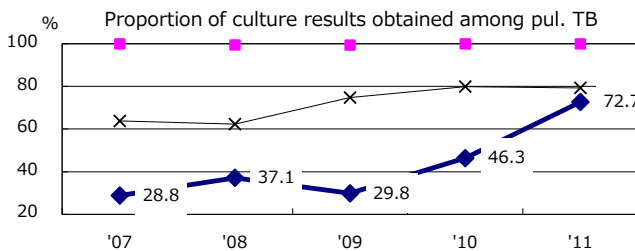
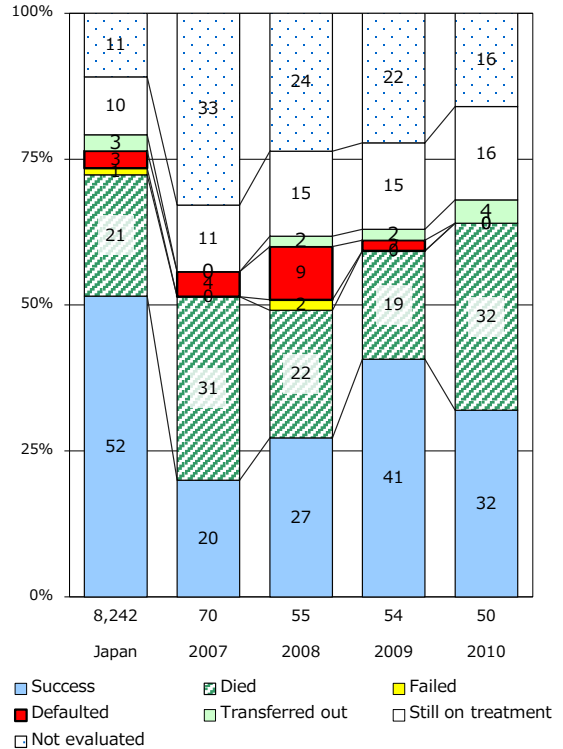


| TB statistics in 2011 | | |
|---|---------|--------------|
| Population | 846,787 | (Japan) |
| Foreign borns | 3 | 1.8% (4.1%) |
| TB patients with homeless history | 0 | 0.0% (1.4%) |
| Jobless TB patients getting public assistance, proportion among male TB patients aged 35-59 yrs | 0 | 0.0% (10.6%) |

| Trends | '07 | '08 | '09 | '10 | '11 |
|------------------------------|------|------|------|------|------|
| Notified cases | 172 | 156 | 144 | 177 | 168 |
| Rate per 100,000 | 20.0 | 18.2 | 16.9 | 20.8 | 19.8 |
| Sputum smear pos. pul. cases | 75 | 59 | 62 | 53 | 55 |
| Rate per 100,000 | 8.7 | 6.9 | 7.3 | 6.2 | 6.5 |



Treatment outcomes of new sputum smear-pos. cases registered in 2007-2010



| | '07 | '08 | '09 | '10 | '11 | Year of registration | '07 | '08 | '09 | '10 | Japan |
|------------------------------|------|------|------|------|------|---|-----|-----|-----|-----|-------|
| † Excluding unknown delay(%) | 39.4 | 54.9 | 79.2 | 58.9 | 37.0 | Median days of treatment (all forms) | 279 | 278 | 285 | 291 | (272) |
| #Excluding unknown Tx(%) | 16.3 | 12.1 | 9.7 | 9.5 | 13.4 | Median days of hospitalization (pul.TB) | 70 | 76 | 63 | 72 | (65) |