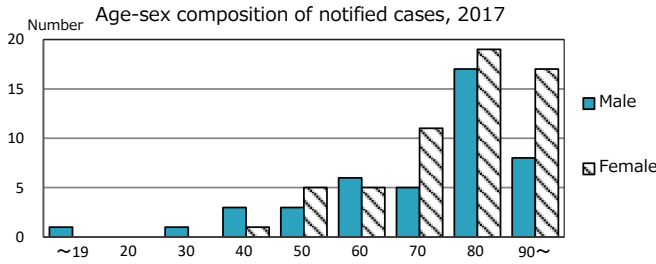
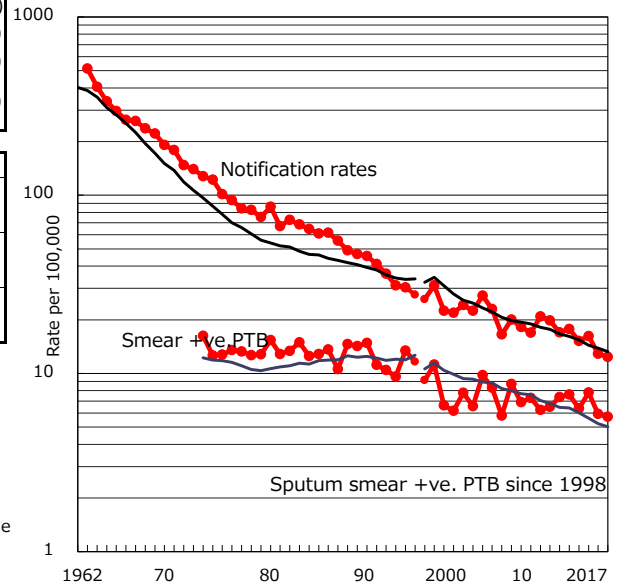


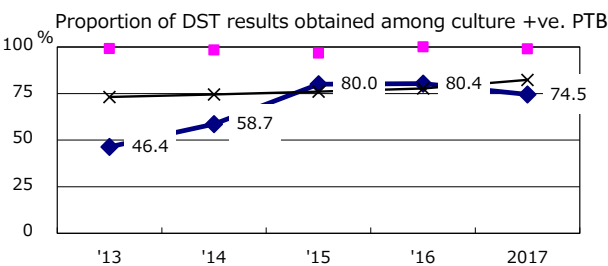
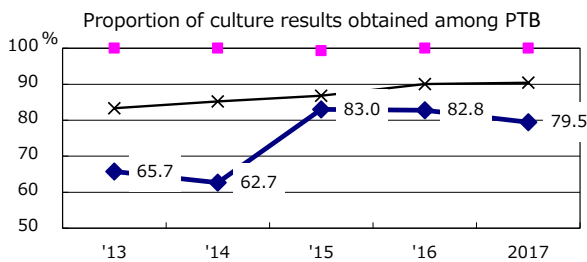
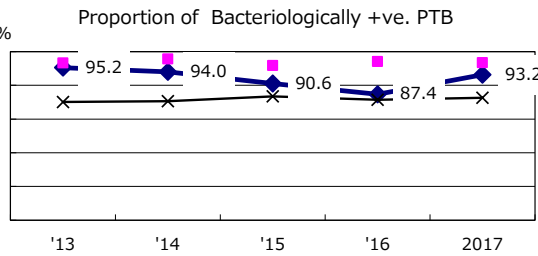
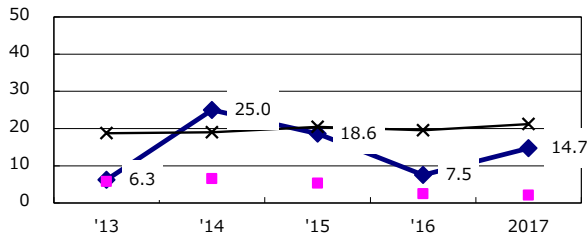
TB statistics in 2017 (Population in Saga 823,773)	
Among newly notified : (Japan)	
Foreign borns	1 1.0% (9.1%)
TB cases with homeless history	0 0.0% (0.9%)
Male aged 35-59, without job and receiving public assistance	0 0.0% (7.3%)

Trends	'13	'14	'15	'16	2017
Notified cases	149	127	135	106	102
Rate per 100,000 population	17.7	15.2	16.2	12.9	12.4
Sputum smear +ve. PTB	64	53	65	49	47
Rate per 100,000 population	7.6	6.3	7.8	5.9	5.7
Latent Tuberculosis Infection	44	39	38	46	25
Rate per 100,000 population	5.2	4.7	4.6	5.6	3.0

Trends of TB notification rates, all forms and smear +ve.PTB

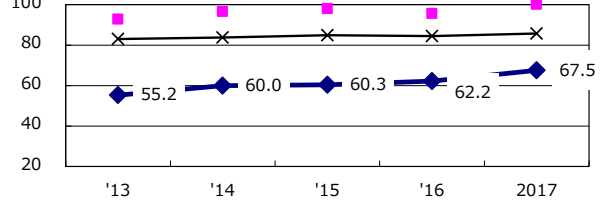


Age-sex composition of notified cases, 2017

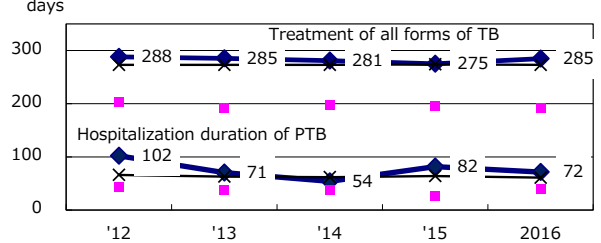


—◆— Saga ■ Best prefec./city —×— Japan

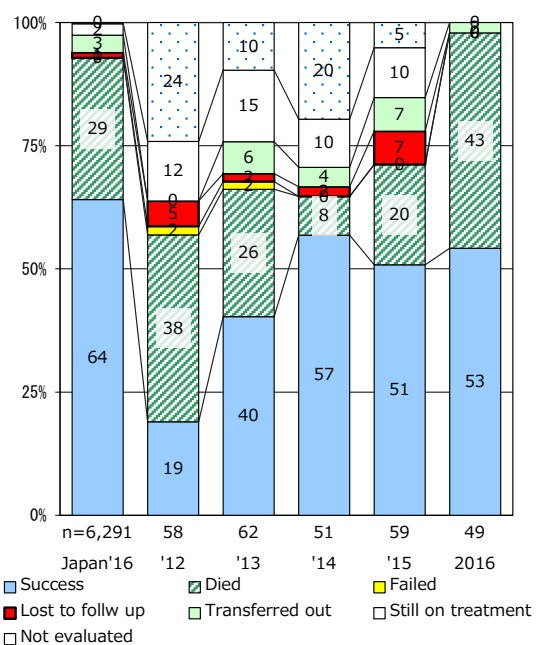
Proportion of TX with HRZ-E/S among all forms of TB cases aged under 80 yrs †



Median duration of treatment of all forms and hospitalization among PTB



Treatment outcomes of new sputum smear +ve.TB



PTB : pulmonary TB

† Excluding unknown delay(%)	'13	'14	'15	'16	2017
	57.3	51.7	50.6	27.4	39.3

‡ Excluding unknown Tx(%)	'13	'14	'15	'16	2017
	9.5	7.1	0.0	4.3	2.4