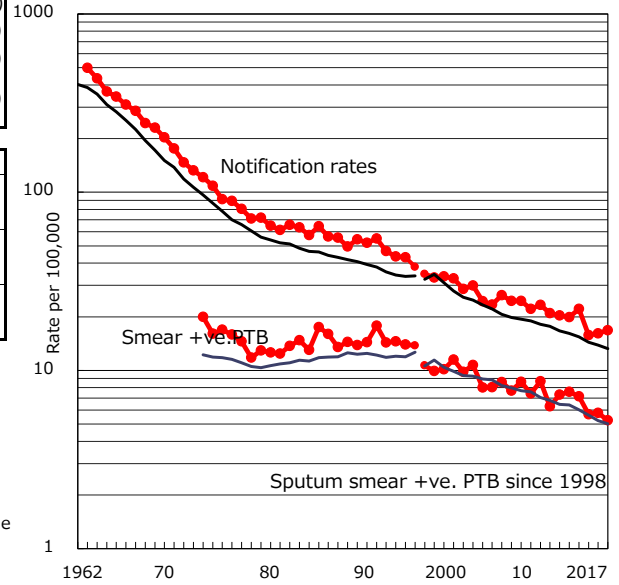


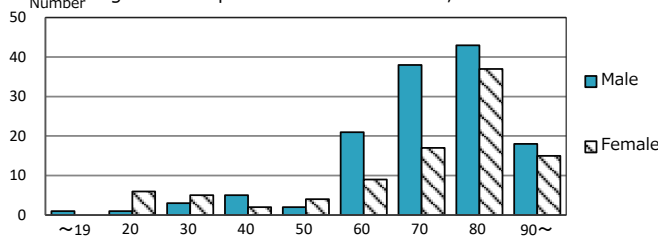
TB statistics in 2017 ( Population in Nagasaki 1,354,038 )	
Among newly notified :	(Japan)
Foreign borns	11 4.8% (9.1%)
TB cases with homeless history	2 0.9% (0.9%)
Male aged 35-59,without job and receiving public assistance	0 0.0% (7.3%)

Trends	'13	'14	'15	'16	2017
Notified cases	278	307	217	218	227
Rate per 100,000 population	19.9	22.1	15.7	16.1	16.8
Sputum smear +ve. PTB	106	99	78	79	71
Rate per 100,000 population	7.6	7.1	5.7	5.8	5.2
Latent Tuberculosis Infection	102	146	52	50	110
Rate per 100,000 population	7.3	10.5	3.8	3.7	8.1

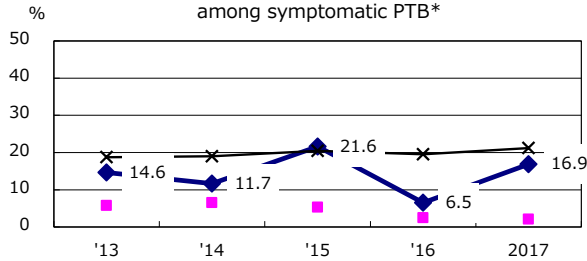
Trends of TB notification rates, all forms and smear +ve.PTB



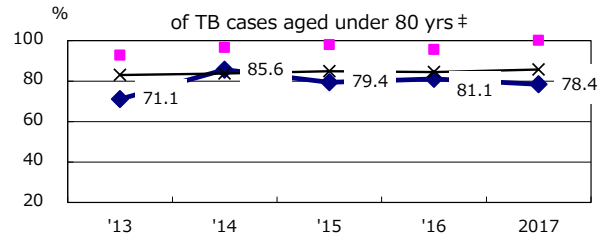
Age-sex composition of notified cases, 2017



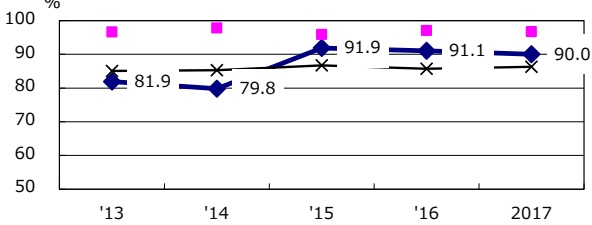
Proportion of cases with total diagnosis delay(> 3 mths) among symptomatic PTB\*



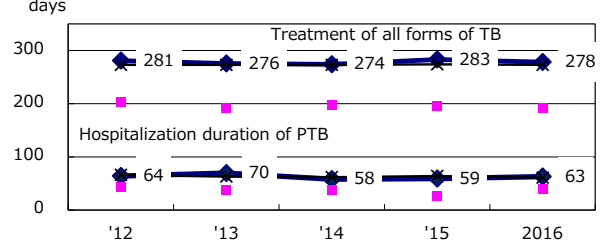
Proportion of TX with HRZ-E/S among all forms of TB cases aged under 80 yrs †



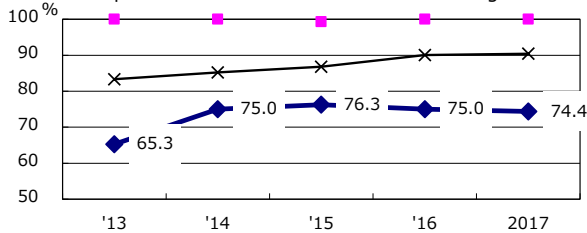
Proportion of Bacteriologically +ve. PTB



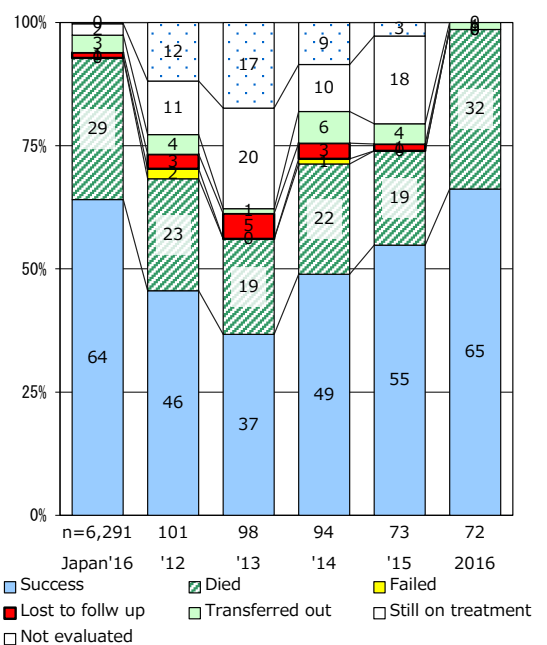
Median duration of treatment of all forms and hospitalization among PTB



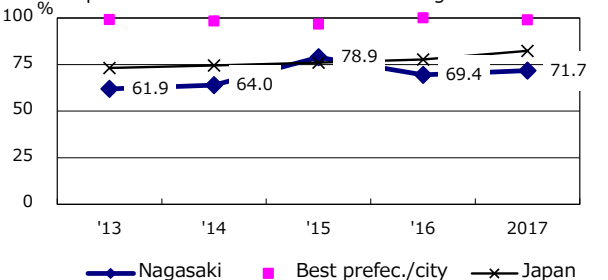
Proportion of culture results obtained among PTB



Treatment outcomes of new sputum smear +ve.TB



Proportion of DST results obtained among culture +ve. PTB



PTB : pulmonary TB

† Excluding unknown delay(%)	'13	'14	'15	'16	2017
	51.5	52.5	44.4	35.7	37.4

‡ Excluding unknown Tx(%)	'13	'14	'15	'16	2017
	2.6	0.6	1.8	3.1	2.6