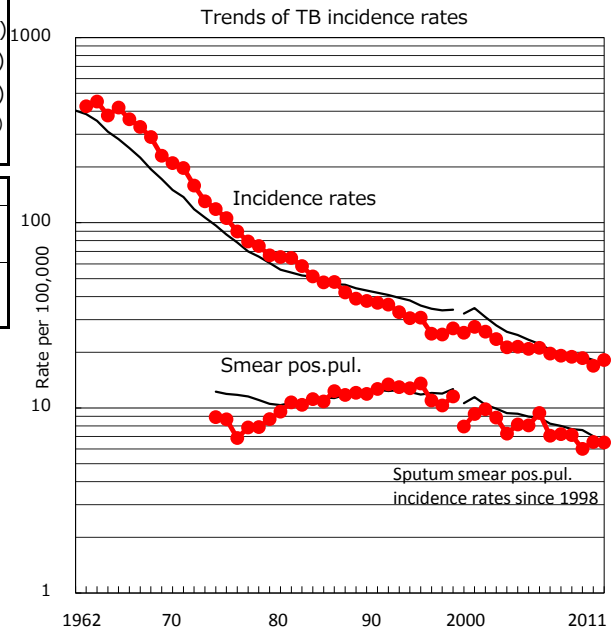
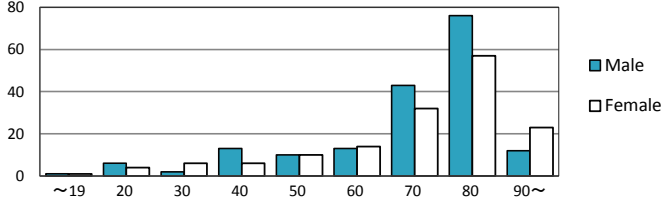


TB statistics in 2011		
Population	1,812,575	(Japan)
Foreign borns	5	1.5% (4.1%)
TB patients with homeless history	0	0.0% (1.4%)
Jobless TB patients getting public assistance, proportion among male TB patients aged 35-59 yrs	0	0.0% (10.6%)

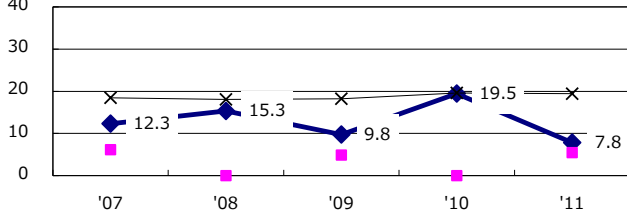
Trends	'07	'08	'09	'10	'11
Notified cases	350	344	337	307	329
Rate per 100,000	19.1	18.9	18.6	16.9	18.2
Sputum smear pos. pul. cases	132	130	109	119	118
Rate per 100,000	7.2	7.1	6.0	6.5	6.5



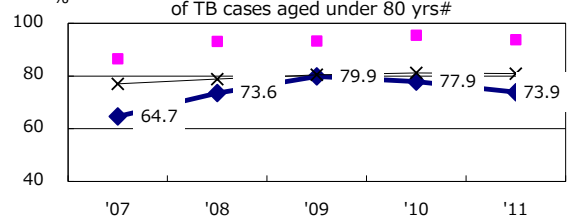
(Pop.) Age-sex composition of notified cases, 2011



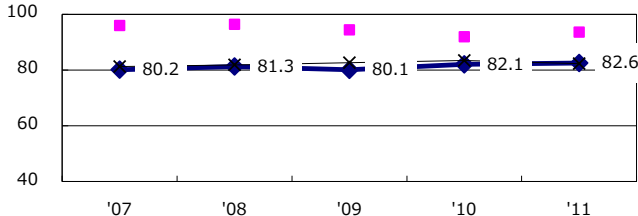
Proportion of cases with long case finding delay (>3M) among symptomatic pul. TB †



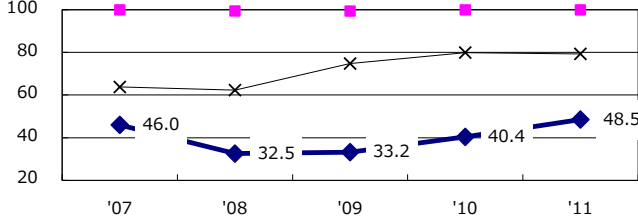
Proportion of Tx with HRZ-E/S among all forms of TB cases aged under 80 yrs#



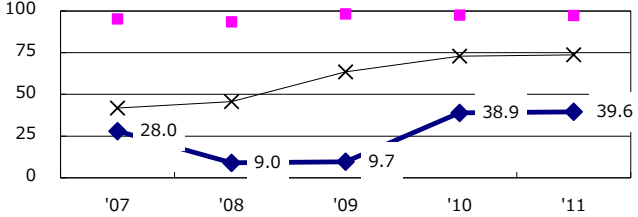
Proportion of bacillary cases among pul. TB



Proportion of culture results obtained among pul. TB

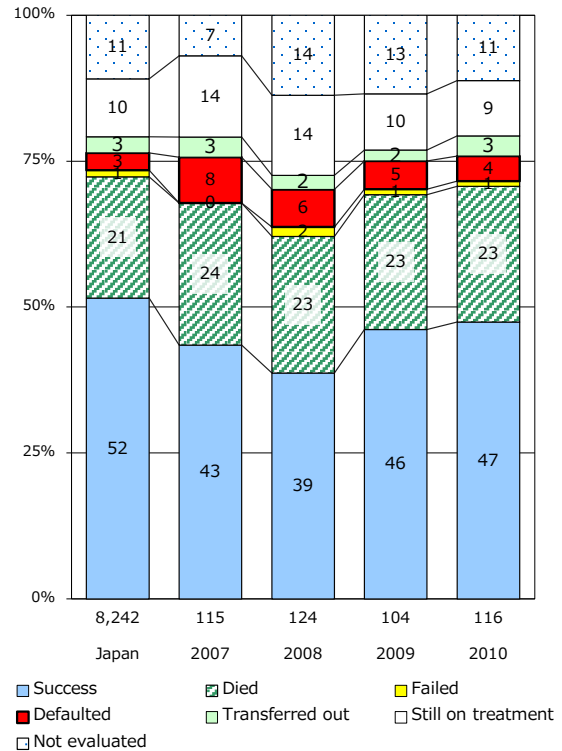


Proportion of DST results obtained among culture pos.



—◆— Kumamoto —■— Best prefec./city —x— Japan

Treatment outcomes of new sputum smear-pos. cases registered in 2007-2010



	'07	'08	'09	'10	'11	Year of registration	'07	'08	'09	'10	Japan
† Excluding unknown delay(%)	14.4	27.5	55.4	36.5	46.6	Median days of treatment (all forms)	272	274	270	274	(272)
#Excluding unknown Tx(%)	1.4	2.5	3.6	7.0	5.0	Median days of hospitalization (pul. TB)	51	52	59	56	(65)