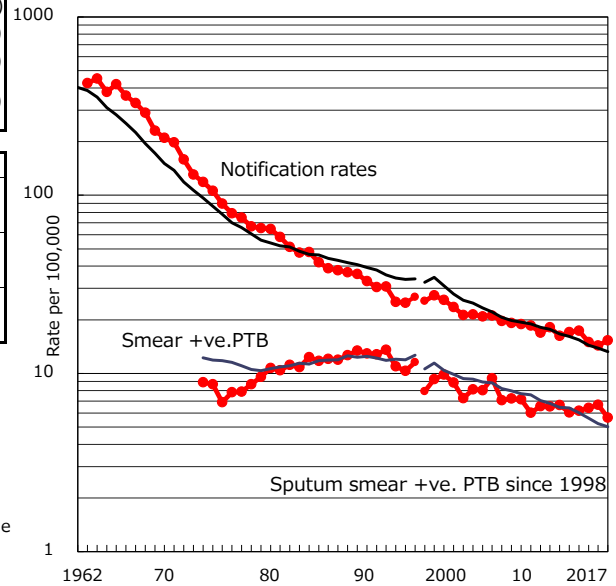


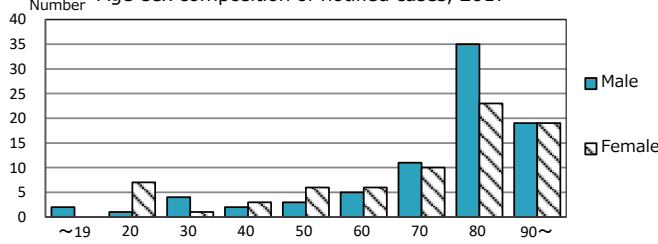
TB statistics in 2017 (Population in Kumamoto 1,025,457)	
Among newly notified : (Japan)	
Foreign borns	9 5.7% (9.1%)
TB cases with homeless history	2 1.3% (0.9%)
Male aged 35-59, without job and receiving public assistance	0 0.0% (7.3%)

Trends	'13	'14	'15	'16	2017
Notified cases	181	183	157	147	157
Rate per 100,000 population	17.1	17.4	15.0	14.3	15.3
Sputum smear +ve. PTB	64	65	67	69	58
Rate per 100,000 population	6.0	6.2	6.4	6.7	5.7
Latent Tuberculosis Infection	43	58	47	33	38
Rate per 100,000 population	4.1	5.5	4.5	3.2	3.7

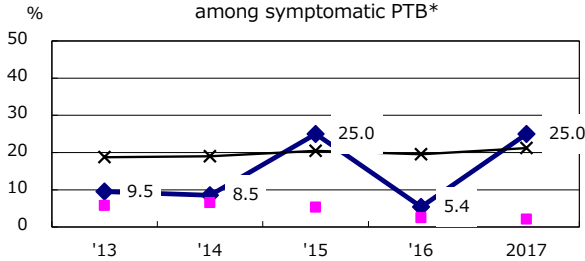
Trends of TB notification rates, all forms and smear +ve.PTB



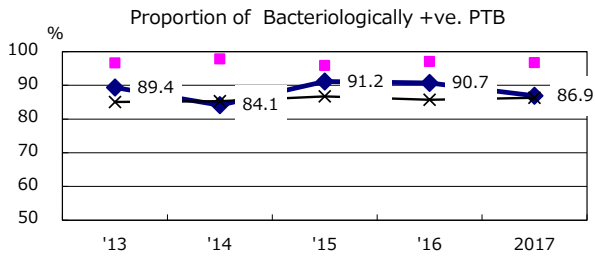
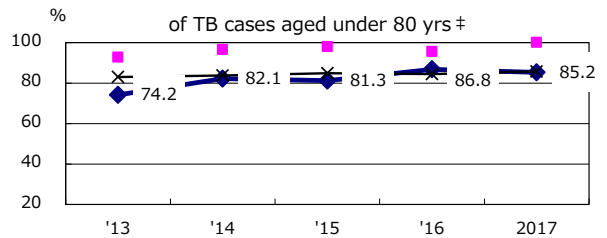
Age-sex composition of notified cases, 2017



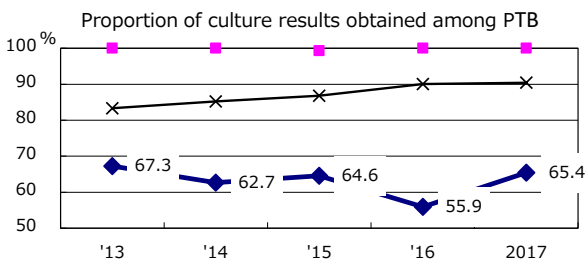
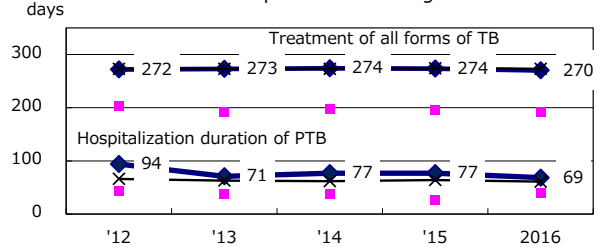
Proportion of cases with total diagnosis delay (> 3 mths) among symptomatic PTB*



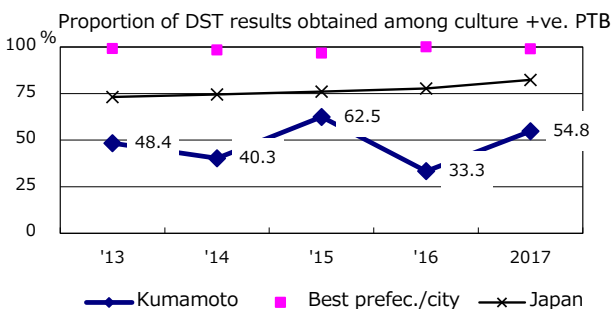
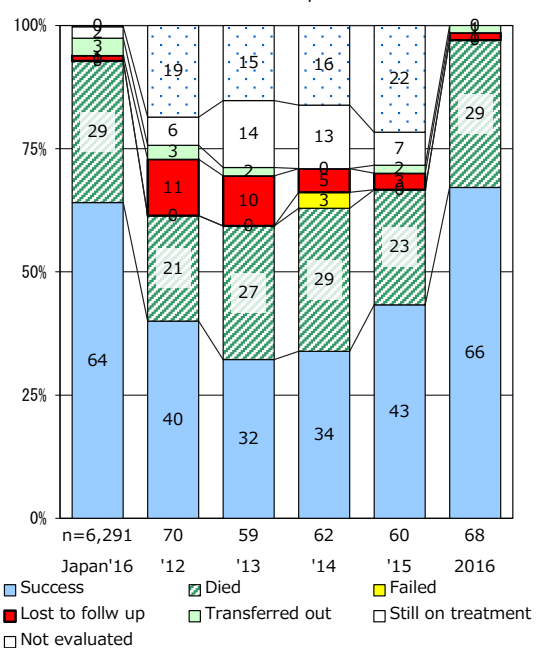
Proportion of TX with HRZ-E/S among all forms of TB cases aged under 80 yrs †



Median duration of treatment of all forms and hospitalization among PTB



Treatment outcomes of new sputum smear +ve.TB



PTB : pulmonary TB

† Excluding unknown delay(%)	'13	'14	'15	'16	2017
	52.3	51.0	54.0	58.9	68.2

‡ Excluding unknown Tx(%)	'13	'14	'15	'16	2017
	1.1	1.2	0.0	2.9	0.0