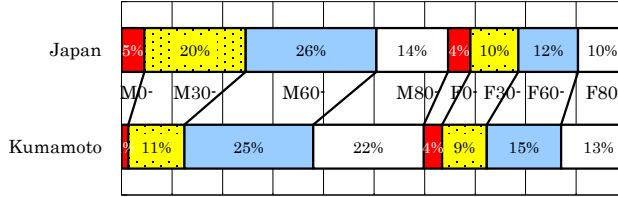


# Kumamoto

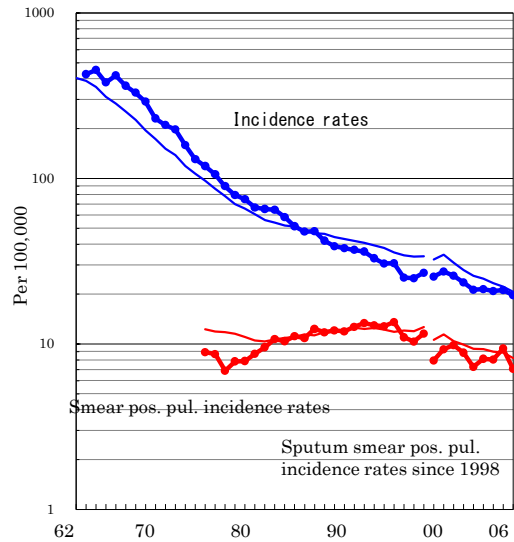
TB statistics in 2006		
Population	1,836,324	Kumamoto (Japan)
Foreigners' TB	8	2.2% (3.5%)
Estimated homeless TB among male cases aged 30-59 yrs	3	7.5% (8.9%)

Trends	02	03	04	05	06
Notified cases	395	397	386	389	361
Rate per 100,000	21.3	21.4	20.8	21.1	19.7
Sputum smear pos. pul. cases	135	151	149	173	130
Rate per 100,000	7.3	8.1	8.0	9.4	7.1

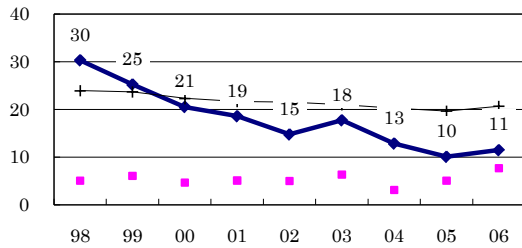
Age-sex composition of notified cases, 2006



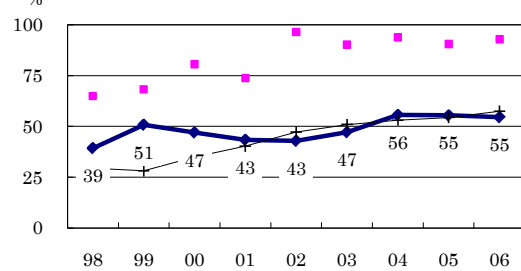
Trends of TB incidence rates



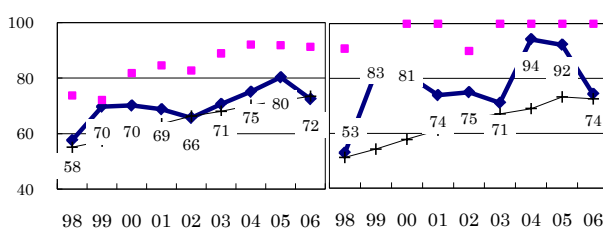
Proportion of cases with long diagnosis delay (>3M) among symptomatic pul. cases



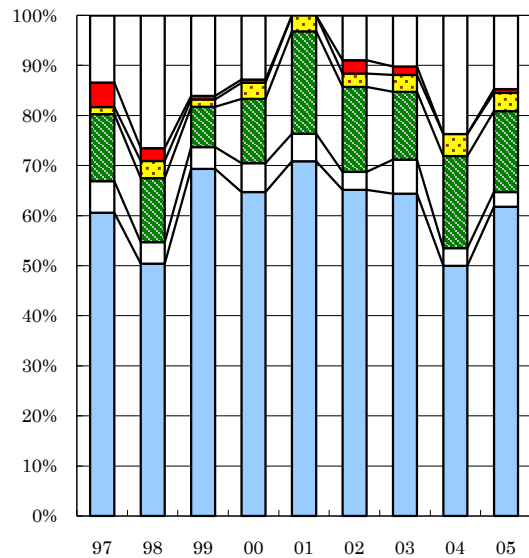
Proportion of positive or negative culture results among pulmonary cases



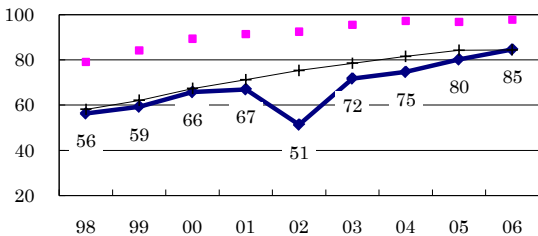
Proportion of bacillary cases among pulmonary cases



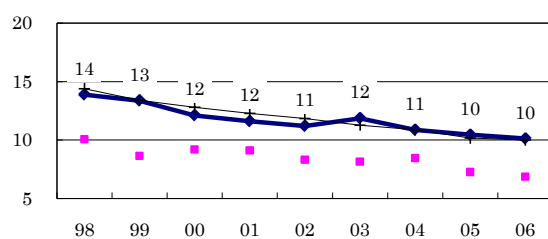
Treatment outcomes of new sputum smear-positive cases, 1997-2005 cohorts



Proportion of treatment with HRZ-E/S among new sputum smear-positive cases aged under 80 yrs



Estimated average treatment duration



	97	98	99	00	01	02	03	04	05
Completed	61	50	69	65	71	65	64	50	62
Others	6	4	4	6	6	4	7	4	3
Died	13	13	8	13	20	17	14	18	16
Failed	1	3	1	3	3	3	3	4	4
Defaulted	5	3	1	1	0	3	2	0	1
Unknown	13	26	16	13	0	9	10	24	15

—●— Kumamoto    —■— Best prefecture/city    —+— Japan