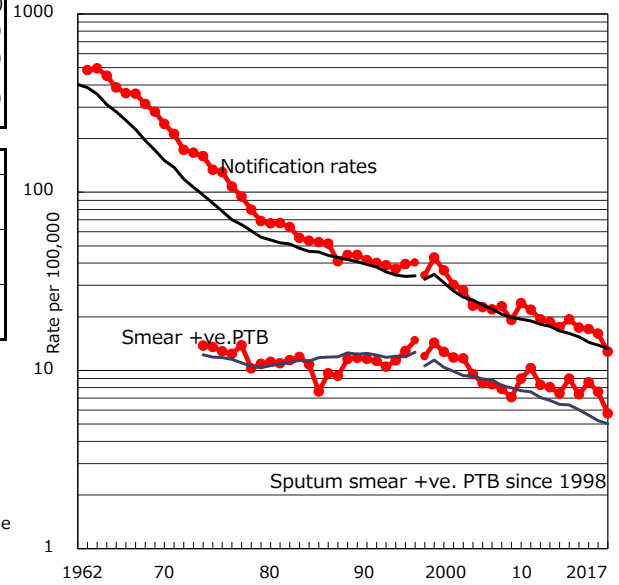


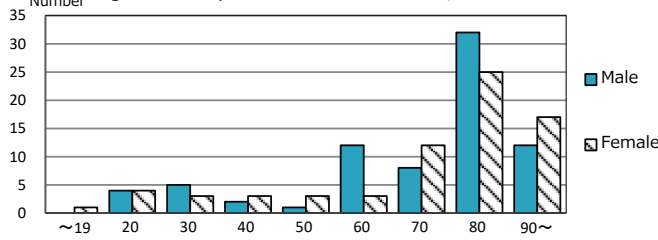
TB statistics in 2017 (Population in Oita		1,152,257)
Among newly notified : (Japan)		
Foreign borns	5	3.4% (9.1%)
TB cases with homeless history	0	0.0% (0.9%)
Male aged 35-59,without job and receiving public assistance	1	12.5% (7.3%)

Trends	'13	'14	'15	'16	2017
Notified cases	228	203	199	185	147
Rate per 100,000 population	19.3	17.3	17.1	16.1	12.8
Sputum smear +ve. PTB	106	86	100	88	66
Rate per 100,000 population	9.0	7.3	8.6	7.6	5.7
Latent Tuberculosis Infection	57	49	114	113	100
Rate per 100,000 population	4.8	4.2	9.8	9.8	8.7

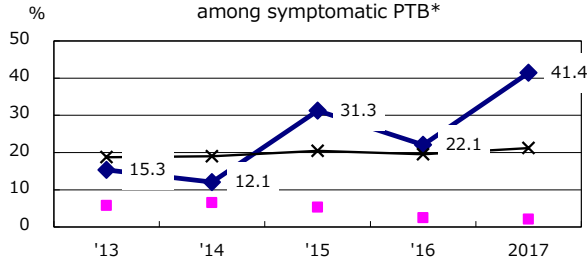
Trends of TB notification rates, all forms and smear +ve.PTB



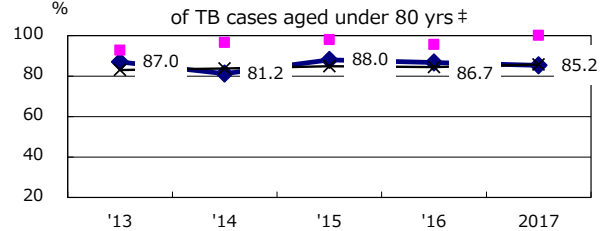
Age-sex composition of notified cases, 2017



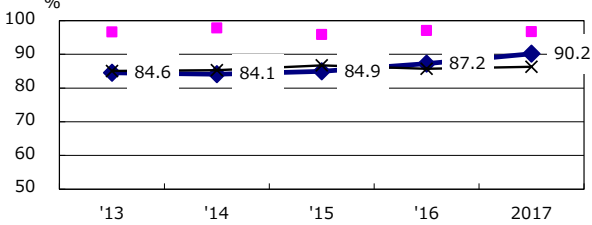
Proportion of cases with total diagnosis delay(> 3 mths) among symptomatic PTB*



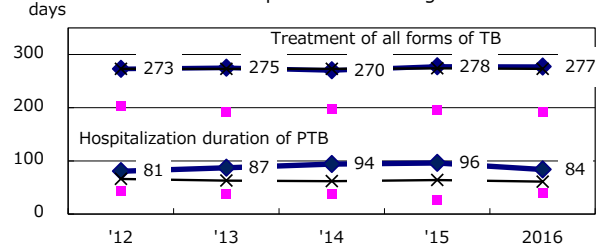
Proportion of TX with HRZ-E/S among all forms



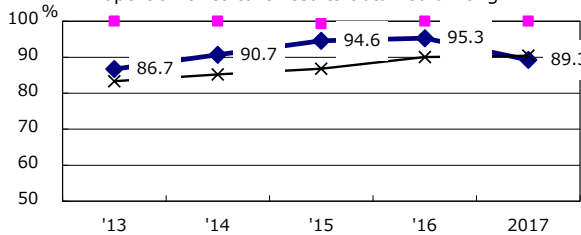
Proportion of Bacteriologically +ve. PTB



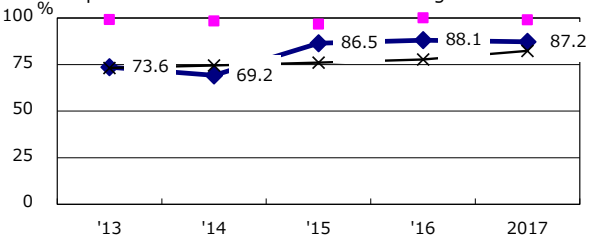
Median duration of treatment of all forms and hospitalization among PTB



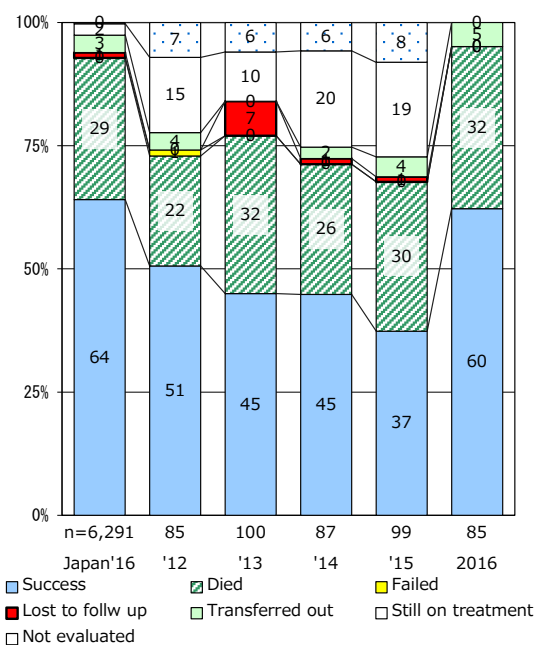
Proportion of culture results obtained among PTB



Proportion of DST results obtained among culture +ve. PTB



Treatment outcomes of new sputum smear +ve.TB



PTB : pulmonary TB

† Excluding unknown delay(%)	'13	'14	'15	'16	2017
	24.5	51.3	24.4	31.9	19.5

‡ Excluding unknown Tx(%)	'13	'14	'15	'16	2017
	0.0	1.9	1.0	3.5	0.0