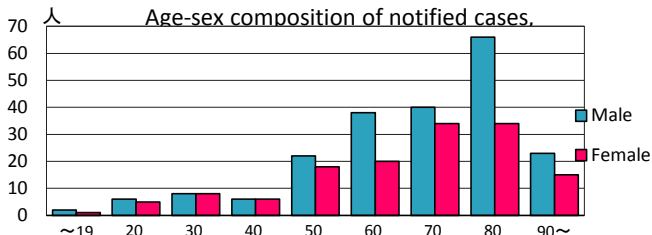
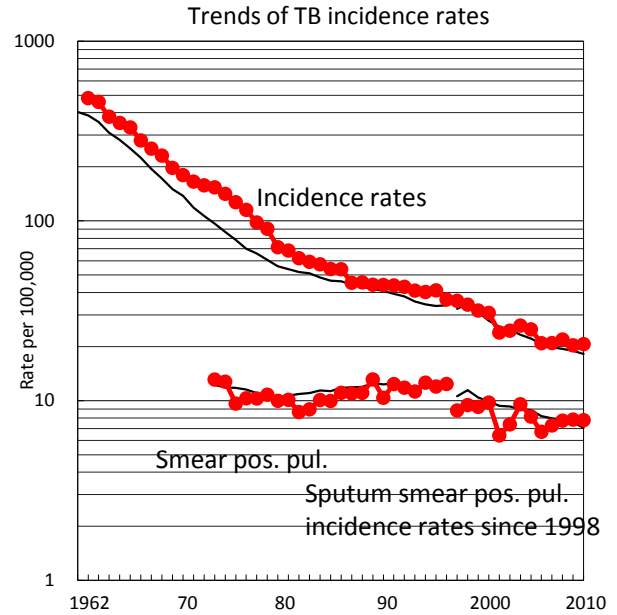
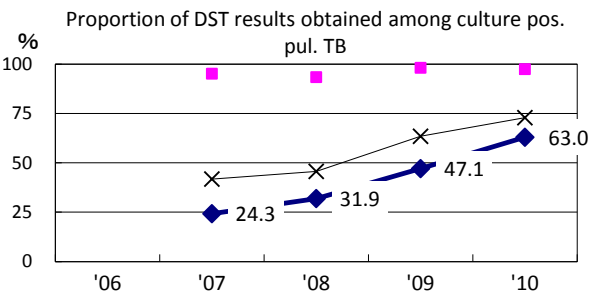
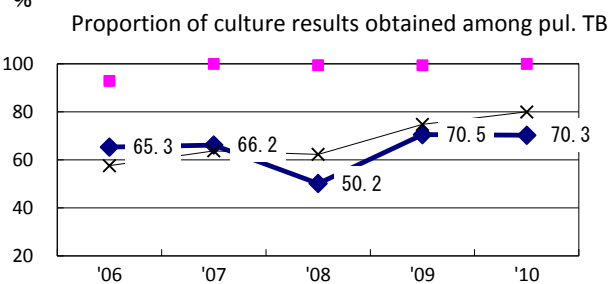
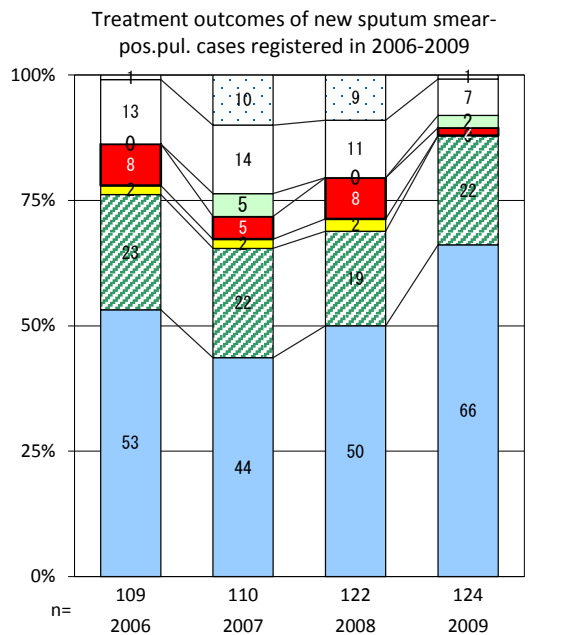
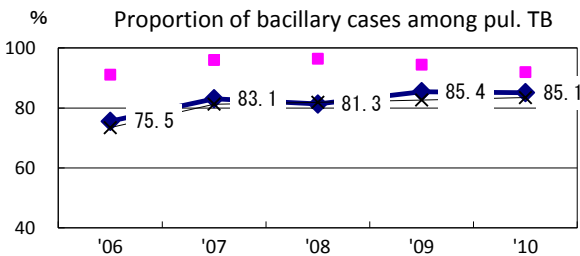
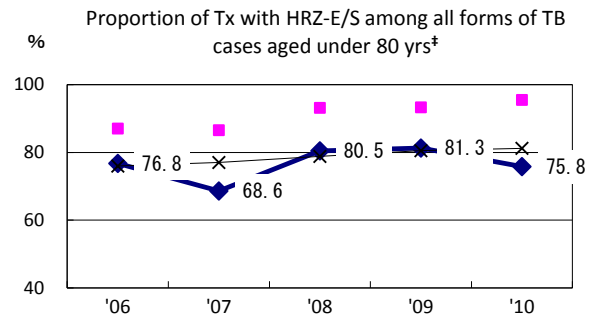
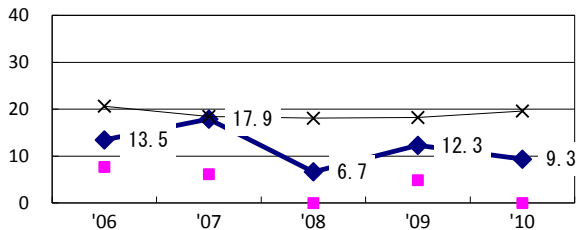


TB statistics in 2010					
Population	1,706,428			(Japan)	
Foreign borns	4	1.1%		(4.1%)	
TB patients with homeless history	0	0.0%		(1.4%)	
Jobless TB patients getting public assistance, proportion among male TB patients aged 35-59 yrs	2	5.6%		(10.8%)	
Trends	'06	'07	'08	'09	'10
Notified cases	364	362	376	347	352
Rate per 100,000	20.9	20.9	21.9	20.3	20.6
Sputum smear pos. pul. cases	117	126	133	134	133
Rate per 100,000	6.7	7.3	7.7	7.8	7.8



Proportion of cases with long case finding delay (>3M) among symptomatic pul. TB †



—◆— Kagoshima    —■— Best prefec./city    —×— Japan

	'06	'07	'08	'09	'10	Year of registration	'07	'08	'09	Japan
†Excluding unknown delay(%)	8.1	44.1	53.1	43.8	47.0	Median days of treatment (all forms)	269	265	272	(270)
‡Excluding unknown Tx (%)	1.2	1.9	2.0	0.0	1.4	Median days of hospitalization (pul.TB)	79	75	81	(68)