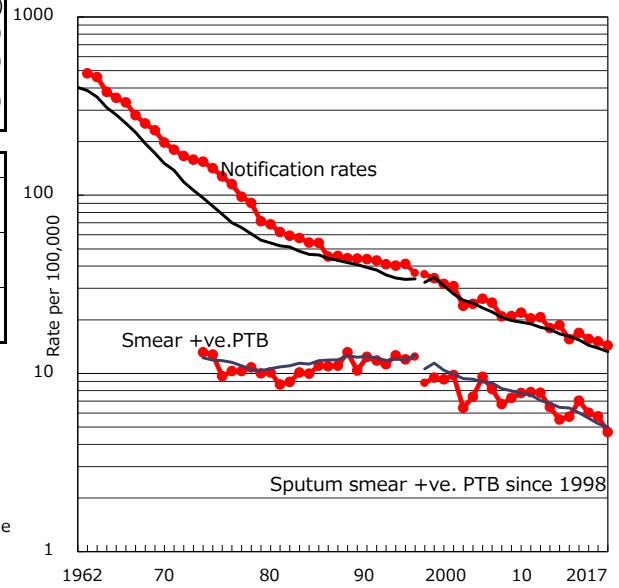


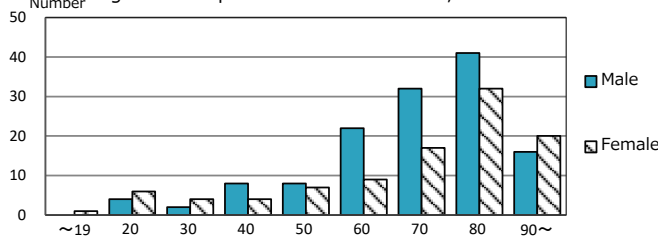
TB statistics in 2017 (Population in Kagoshima 1,625,651)	
Among newly notified : (Japan)	
Foreign borns	7 3.0% (9.1%)
TB cases with homeless history	1 0.4% (0.9%)
Male aged 35-59,without job and receiving public assistance	2 11.1% (7.3%)

Trends	'13	'14	'15	'16	2017
Notified cases	261	281	257	245	233
Rate per 100,000 population	15.5	16.8	15.6	15.1	14.3
Sputum smear +ve. PTB	96	117	99	94	76
Rate per 100,000 population	5.7	7.0	6.0	5.8	4.7
Latent Tuberculosis Infection	48	63	68	77	86
Rate per 100,000 population	2.9	3.8	4.1	4.7	5.3

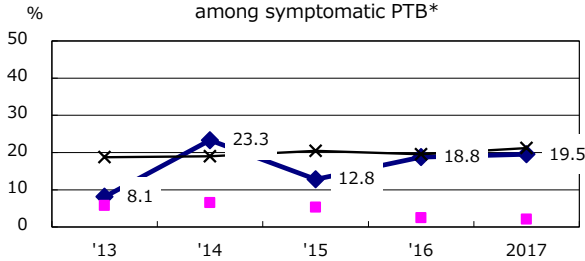
Trends of TB notification rates, all forms and smear +ve.PTB



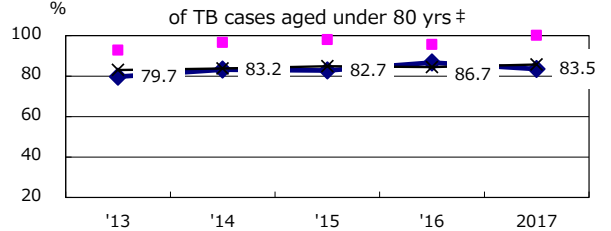
Age-sex composition of notified cases, 2017



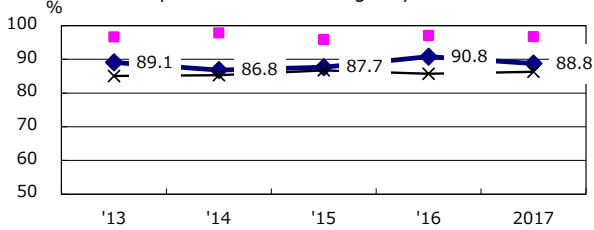
Proportion of cases with total diagnosis delay(> 3 mths) among symptomatic PTB*



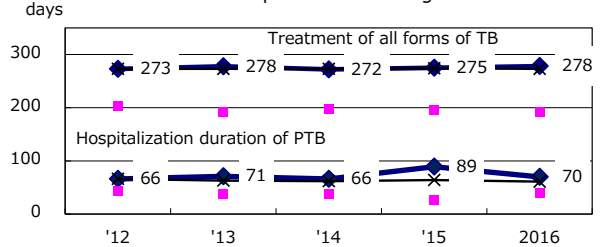
Proportion of TX with HRZ-E/S among all forms



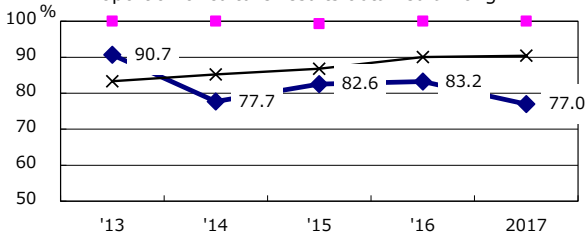
Proportion of Bacteriologically +ve. PTB



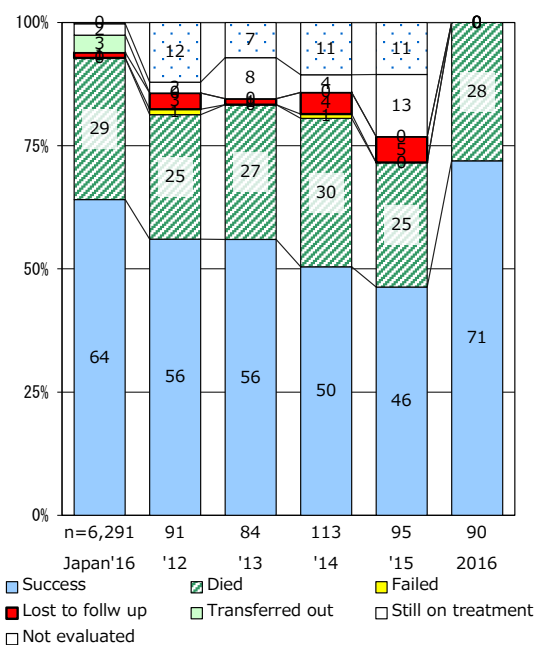
Median duration of treatment of all forms and hospitalization among PTB



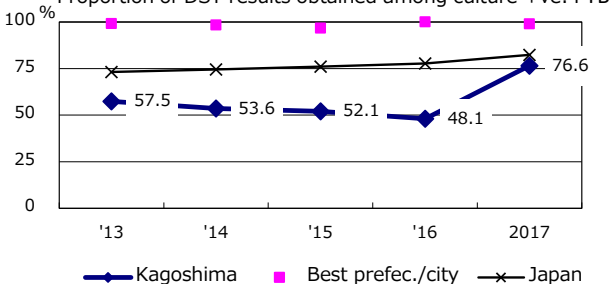
Proportion of culture results obtained among PTB



Treatment outcomes of new sputum smear +ve.TB



Proportion of DST results obtained among culture +ve. PTB



PTB : pulmonary TB

† Excluding unknown delay(%)	'13	'14	'15	'16	2017
	29.7	33.7	33.1	38.5	39.3

‡ Excluding unknown Tx(%)	'13	'14	'15	'16	2017
	3.9	7.4	2.2	0.8	2.4