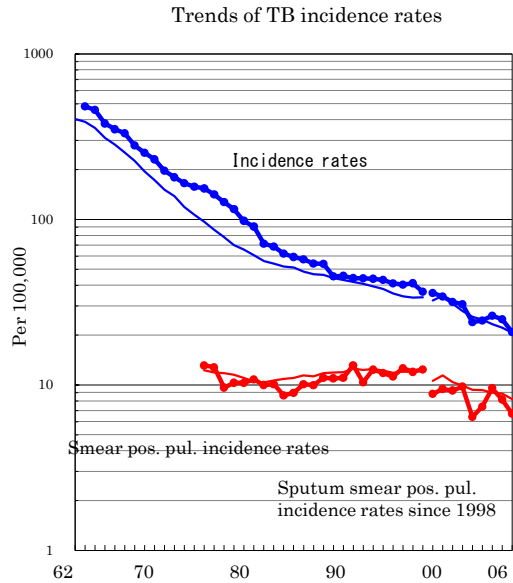
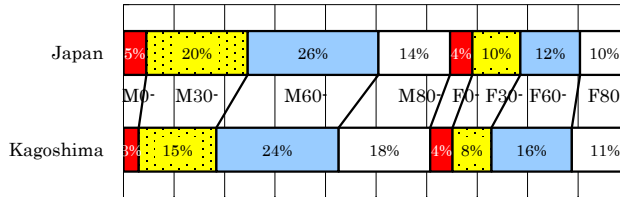


Kagoshima

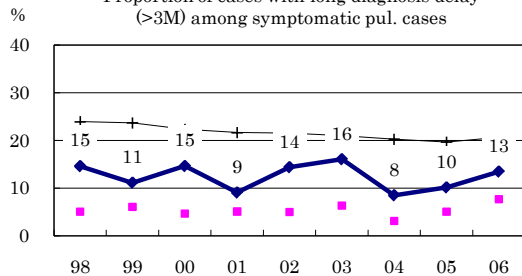
TB statistics in 2006		
Population	1,743,001	Kagoshima (Japan)
Foreigners' TB	5	1.4% (3.5%)
Estimated homeless TB among male cases aged 30-59 yrs	6	10.7% (8.9%)

Trends	02	03	04	05	06
Notified cases	426	435	463	437	364
Rate per 100,000	23.9	24.5	26.2	24.9	20.9
Sputum smear pos. pul. cases	114	131	169	143	117
Rate per 100,000	6.4	7.4	9.6	8.2	6.7

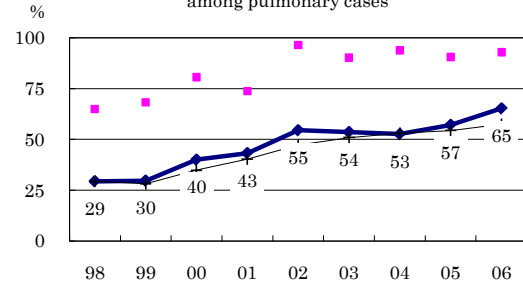
Age-sex composition of notified cases, 2006



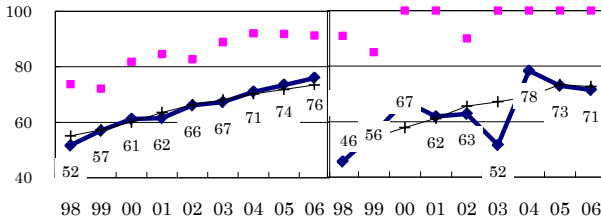
Proportion of cases with long diagnosis delay (>3M) among symptomatic pul. cases



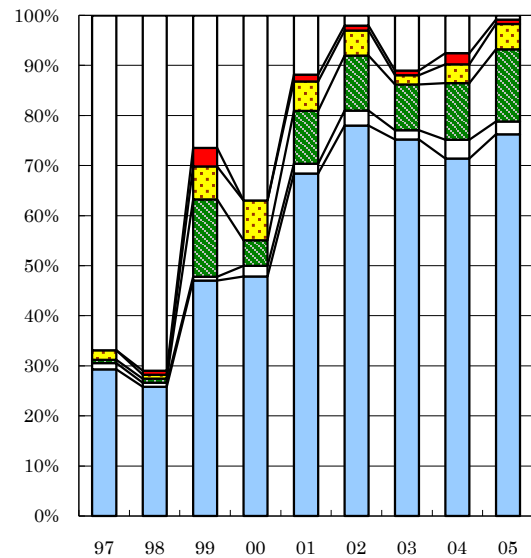
Proportion of positive or negative culture results among pulmonary cases



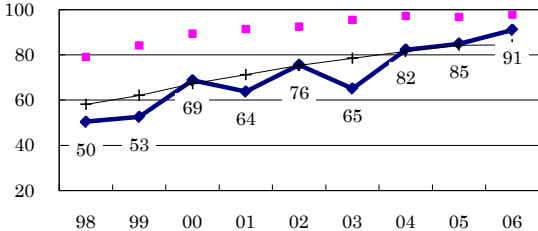
Proportion of bacillary cases among pulmonary cases



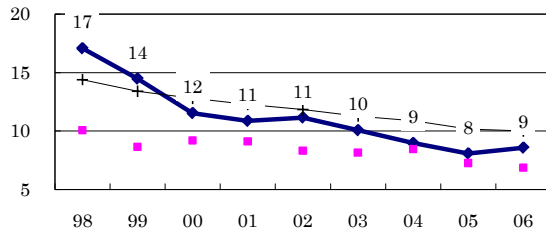
Treatment outcomes of new sputum smear-positive cases, 1997-2005 cohorts



Proportion of treatment with HRZ-E/S among new sputum smear-positive cases aged under 80 yrs



Months Estimated average treatment duration



—●— Kagoshima —■— Best prefecture/city —+— Japan

	n=	157	124	136	138	152	100	109	133	118
Completed	29	26	47	48	68	78	75	71	76	
Others	1	1	1	2	2	3	2	4	3	
Died	1	1	15	5	11	11	9	11	14	
Failed	2	1	7	8	6	5	2	4	5	
Defaulted	0	1	4	0	1	1	1	2	1	
Unknown	67	71	26	37	12	2	11	8	1	