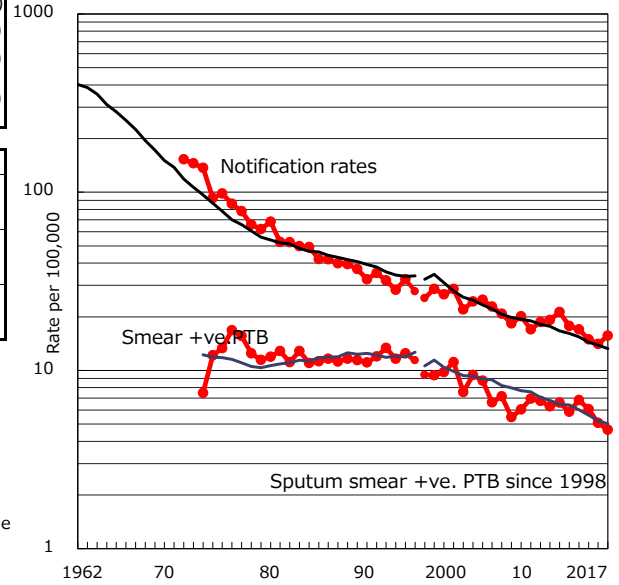


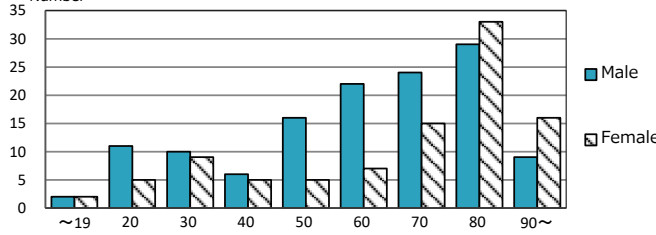
TB statistics in 2017 ( Population in Okinawa 1,443,116 )	
Among newly notified : (Japan)	
Foreign borns	16 7.1% (9.1%)
TB cases with homeless history	5 2.2% (0.9%)
Male aged 35-59, without job and receiving public assistance	3 9.4% (7.3%)

Trends	'13	'14	'15	'16	2017
Notified cases	251	241	214	203	226
Rate per 100,000 population	17.7	17.0	14.9	14.1	15.7
Sputum smear +ve. PTB	83	97	87	73	67
Rate per 100,000 population	5.9	6.8	6.1	5.1	4.6
Latent Tuberculosis Infection	210	182	118	163	125
Rate per 100,000 population	14.8	12.8	8.2	11.3	8.7

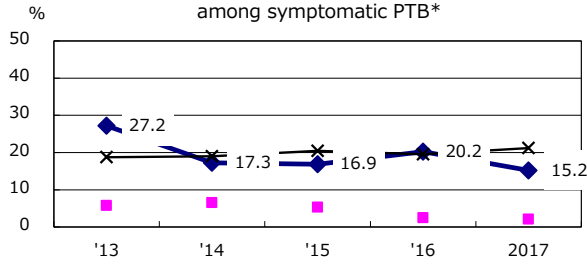
Trends of TB notification rates, all forms and smear +ve.PTB



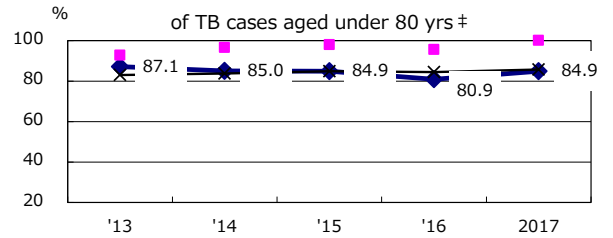
Age-sex composition of notified cases, 2017



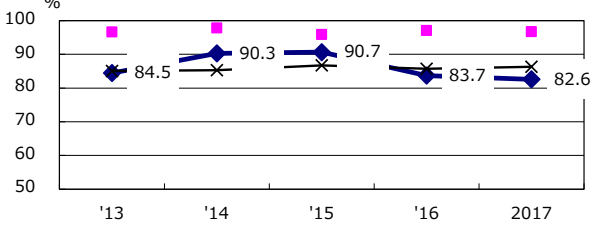
Proportion of cases with total diagnosis delay (> 3 mths) among symptomatic PTB\*



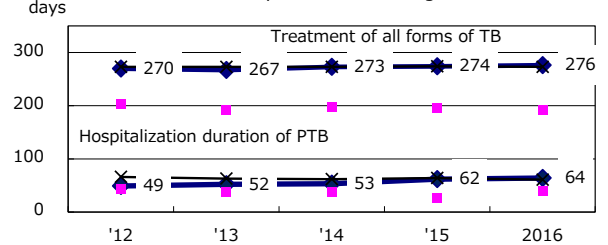
Proportion of TX with HRZ-E/S among all forms



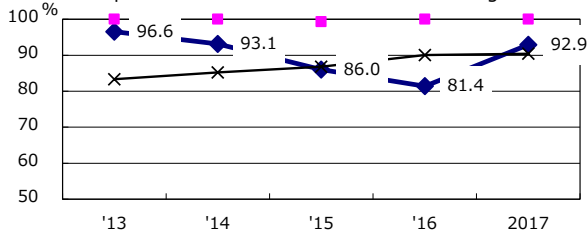
Proportion of Bacteriologically +ve. PTB



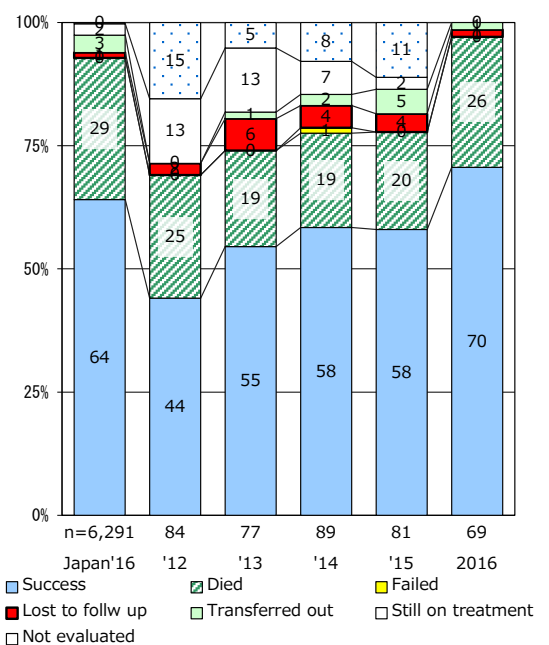
Median duration of treatment of all forms and hospitalization among PTB



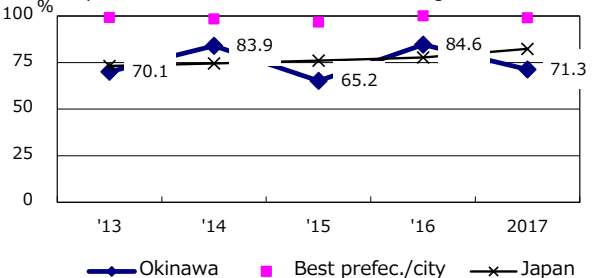
Proportion of culture results obtained among PTB



Treatment outcomes of new sputum smear +ve.TB



Proportion of DST results obtained among culture +ve. PTB



PTB : pulmonary TB

† Excluding unknown delay(%)	'13	'14	'15	'16	2017
	9.4	22.0	31.4	5.1	6.1

‡ Excluding unknown Tx(%)	'13	'14	'15	'16	2017
	0.0	3.0	4.0	0.9	0.0