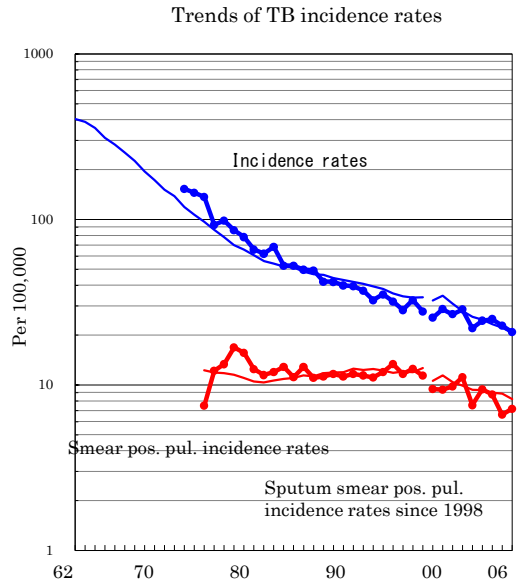
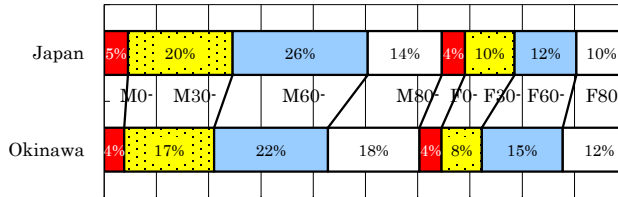


# Okinawa

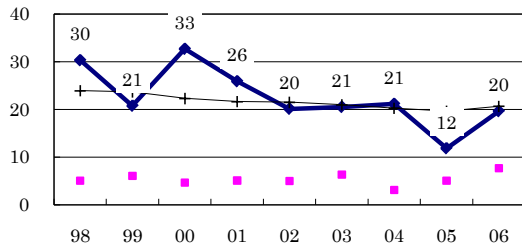
TB statistics in 2006		
Population	1,368,378	Okinawa (Japan)
Foreigners' TB	1	0.4% (3.5%)
Estimated homeless TB among male cases aged 30-59 yrs	4	8.2% (8.9%)

Trends	02	03	04	05	06
Notified cases	294	329	339	310	285
Rate per 100,000	22.0	24.4	24.9	22.8	20.8
Sputum smear pos. pul. cases	101	127	119	90	98
Rate per 100,000	7.5	9.4	8.8	6.6	7.2

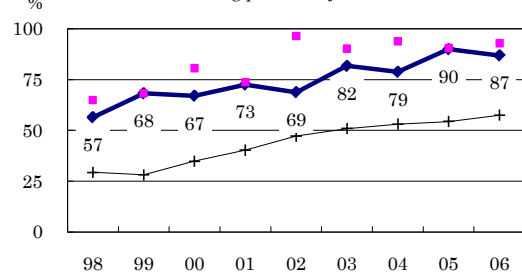
Age-sex composition of notified cases, 2006



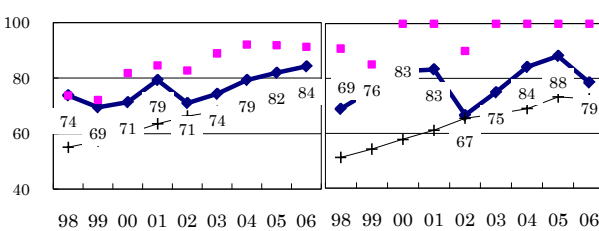
Proportion of cases with long diagnosis delay (>3M) among symptomatic pul. cases



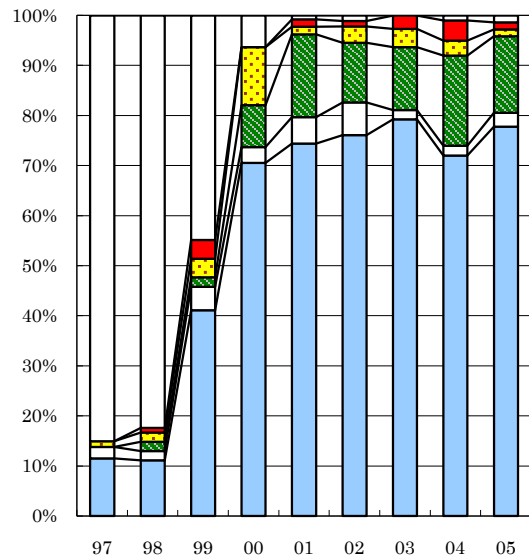
Proportion of positive or negative culture results among pulmonary cases



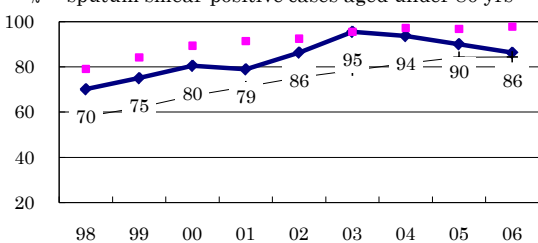
Proportion of bacillary cases among pulmonary cases



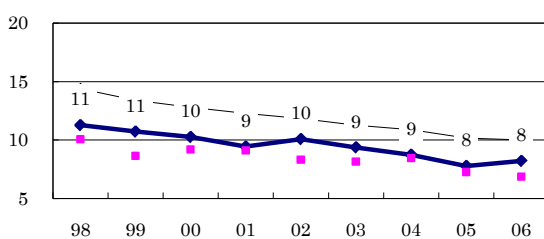
Treatment outcomes of new sputum smear-positive cases, 1997-2005 cohorts



Proportion of treatment with HRZ-E/S among new sputum smear-positive cases aged under 80 yrs



Estimated average treatment duration



Legend for Treatment outcomes: Completed, Others, Died, Failed, Defaulted, Unknown

	n=	87	108	107	95	133	92	111	100	72
Completed	11	11	41	71	74	76	79	72	78	
Others	2	2	5	3	5	7	2	2	3	
Died	0	2	2	8	17	12	13	18	15	
Failed	1	2	4	12	2	3	4	3	1	
Defaulted	0	1	4	0	2	1	3	4	1	
Unknown	85	82	45	6	1	1	0	1	1	