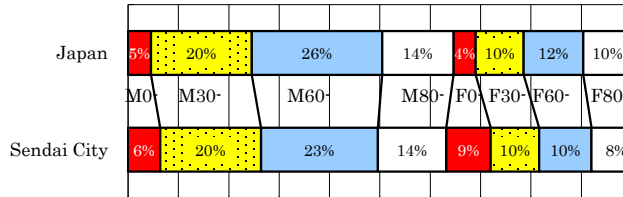


Sendai City

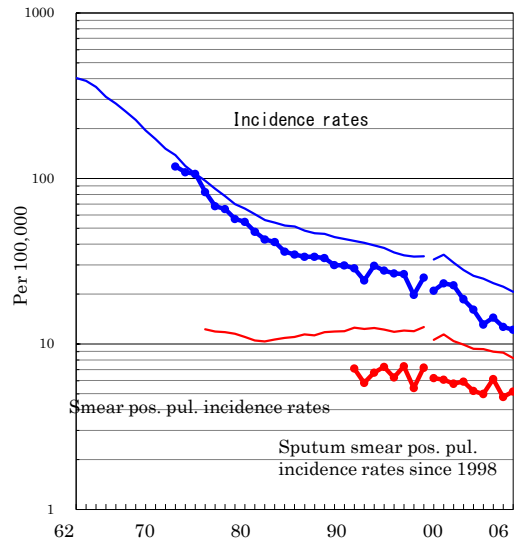
TB statistics in 2006		
Population	1,027,329	Sendai City (Japan)
Foreigners' TB	6	4.8% (3.5%)
Estimated homeless TB among male cases aged 30-59 yrs	1	4.0% (8.9%)

Trends	02	03	04	05	06
Notified cases	164	134	148	130	125
Rate per 100,000	16.1	13.1	14.4	12.7	12.2
Sputum smear pos. pul. cases	53	51	63	49	53
Rate per 100,000	5.2	5.0	6.1	4.8	5.2

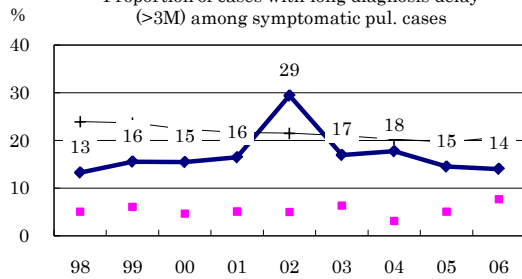
Age-sex composition of notified cases, 2006



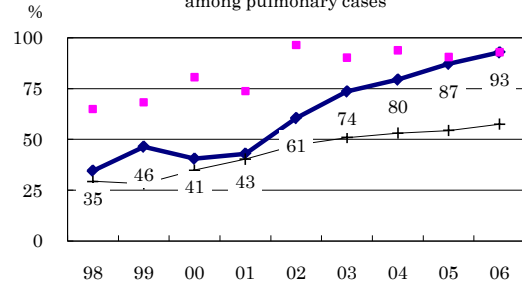
Trends of TB incidence rates



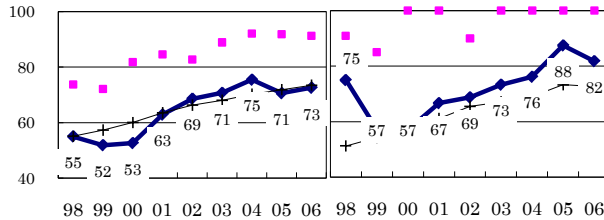
Proportion of cases with long diagnosis delay (>3M) among symptomatic pul. cases



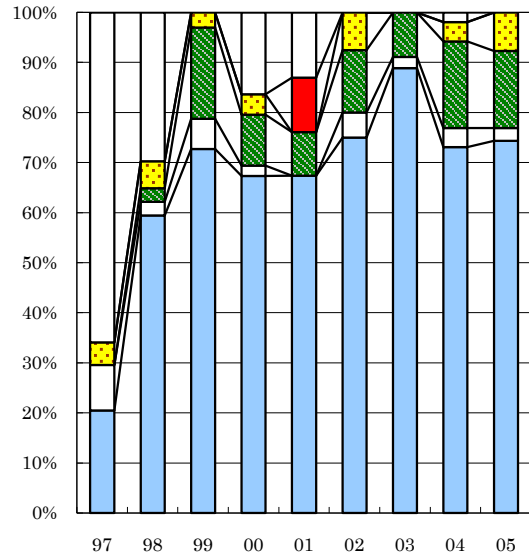
Proportion of positive or negative culture results among pulmonary cases



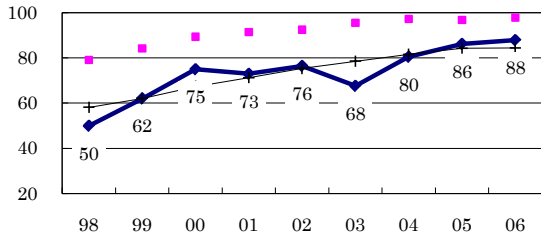
Proportion of bacillary cases among pulmonary cases



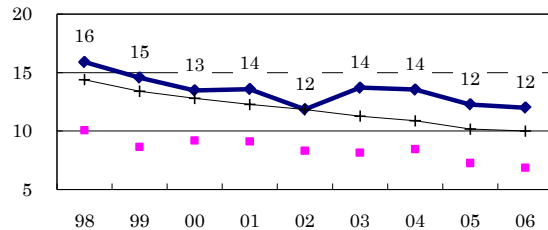
Treatment outcomes of new sputum smear-positive cases, 1997-2005 cohorts



Proportion of treatment with HRZ-E/S among new sputum smear-positive cases aged under 80 yrs



Estimated average treatment duration



Legend for Treatment outcomes: Completed, Others, Died, Failed, Defaulted, Unknown

	n=	97	98	99	00	01	02	03	04	05
Completed	44	20	59	73	67	67	75	89	73	74
Others	37	9	3	6	2	0	5	2	4	3
Died	33	0	3	18	10	9	13	9	17	15
Failed	49	5	5	3	4	0	8	0	4	8
Defaulted	46	0	0	0	0	11	0	0	0	0
Unknown	40	66	30	0	16	13	0	0	2	0