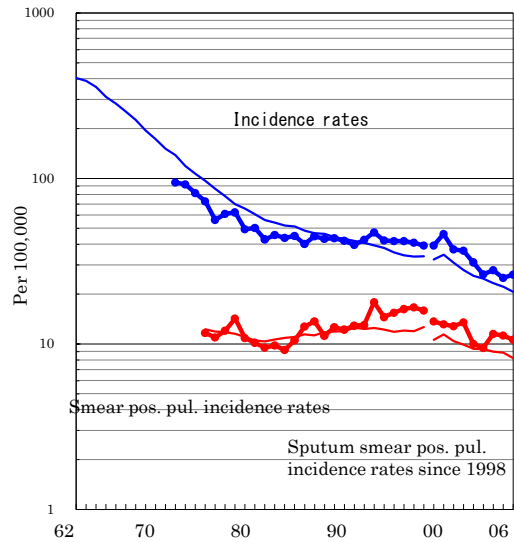


# Kawasaki City

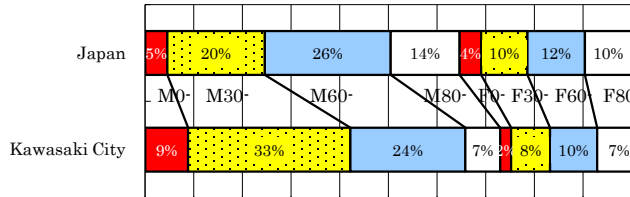
TB statistics in 2006		
Population	1,342,262	Kawasaki City (Japan)
Foreigners' TB	15	4.3% (3.5%)
Estimated homeless TB among male cases aged 30-59 yrs	22	18.8% (8.9%)

Trends	02	03	04	05	06
Notified cases	398	340	363	332	351
Rate per 100,000	31.1	26.3	27.8	25.0	26.1
Sputum smear pos. pul. cases	128	122	150	149	142
Rate per 100,000	10.0	9.4	11.5	11.2	10.6

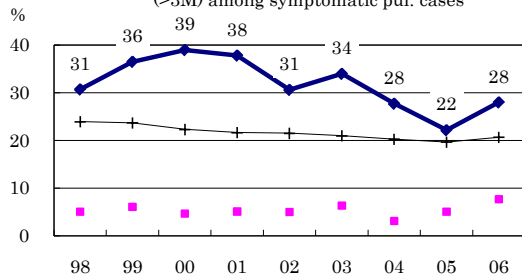
Trends of TB incidence rates



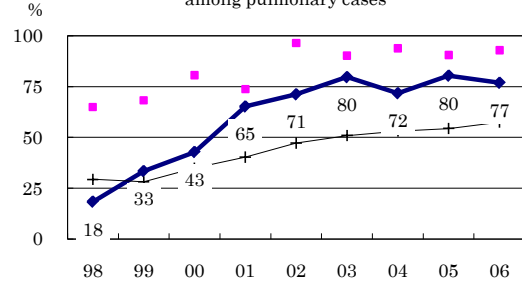
Age-sex composition of notified cases, 2006



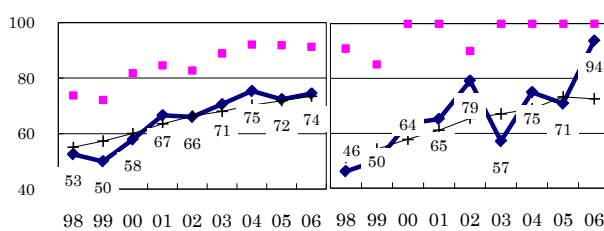
Proportion of cases with long diagnosis delay (>3M) among symptomatic pul. cases



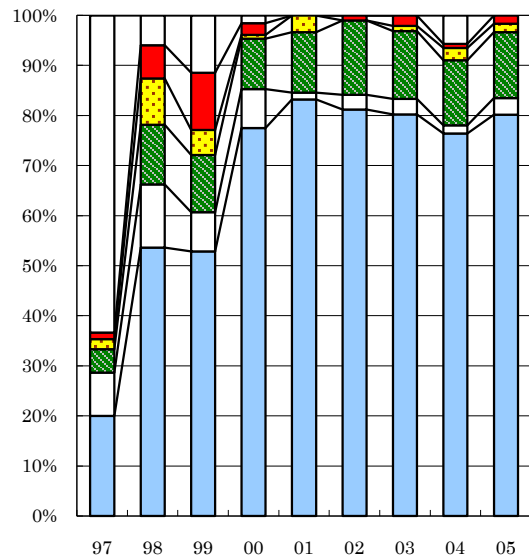
Proportion of positive or negative culture results among pulmonary cases



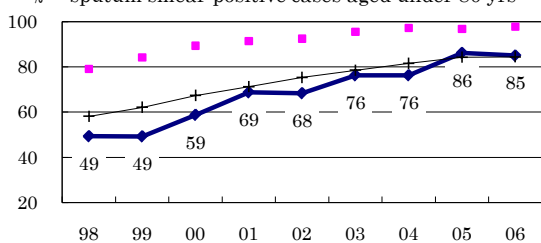
Proportion of bacillary cases among pulmonary cases



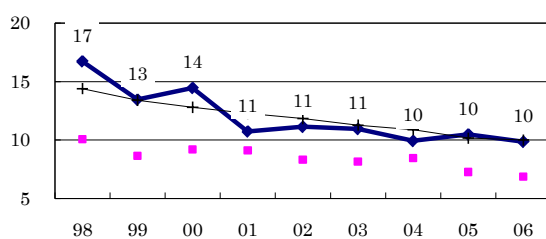
Treatment outcomes of new sputum smear-positive cases, 1997-2005 cohorts



Proportion of treatment with HRZ-E/S among new sputum smear-positive cases aged under 80 yrs



Estimated average treatment duration



Completed Others Died Failed Defaulted Unknown

	n=	150	151	140	129	149	101	96	123	121
Completed	20	54	53	78	83	81	80	76	80	80
Others	9	13	8	8	1	3	3	2	3	3
Died	5	12	11	10	12	15	14	13	13	13
Failed	2	9	5	1	3	0	1	2	2	2
Defaulted	1	7	11	2	0	1	2	1	2	2
Unknown	63	6	11	2	0	0	0	6	0	0