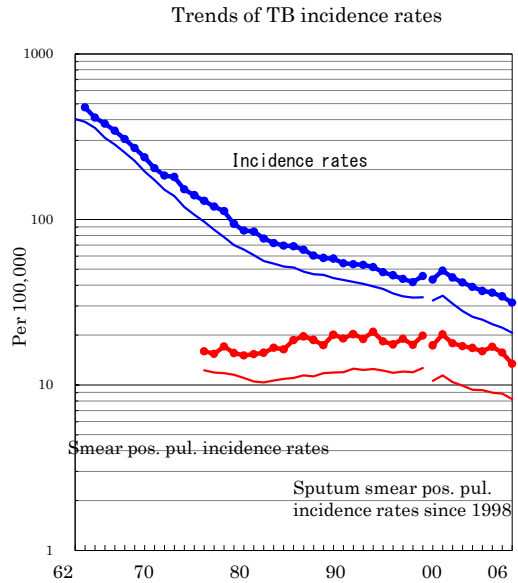
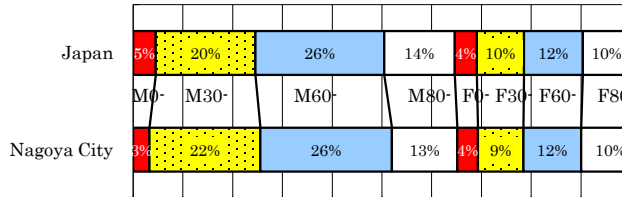


Nagoya City

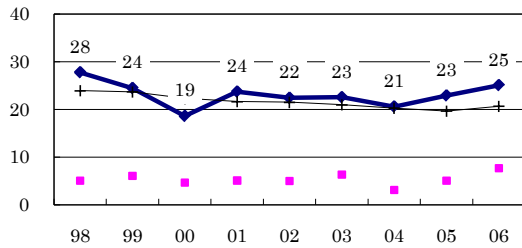
TB statistics in 2006		
Population	2,223,148	Nagoya City (Japan)
Foreigners' TB	29	4.1% (3.5%)
Estimated homeless TB among male cases aged 30-59 yrs	21	13.5% (8.9%)

Trends	02	03	04	05	06
Notified cases	856	812	795	760	700
Rate per 100,000	39.2	37.0	36.1	34.3	31.5
Sputum smear pos. pul. cases	365	350	374	347	298
Rate per 100,000	16.7	16.0	17.0	15.7	13.4

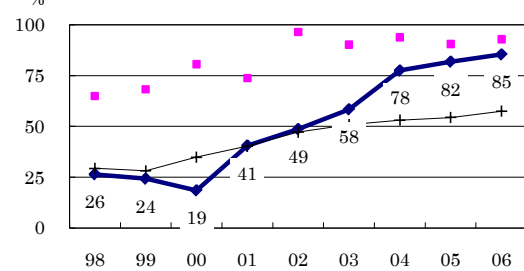
Age-sex composition of notified cases, 2006



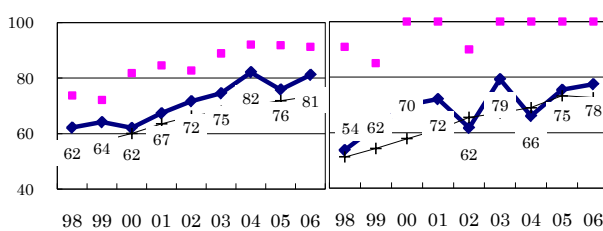
Proportion of cases with long diagnosis delay (>3M) among symptomatic pul. cases



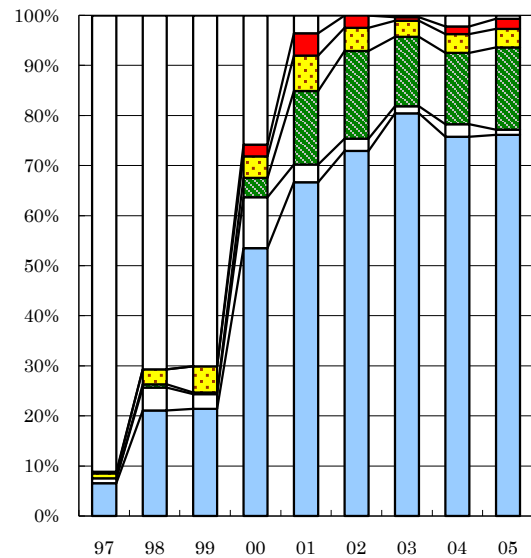
Proportion of positive or negative culture results among pulmonary cases



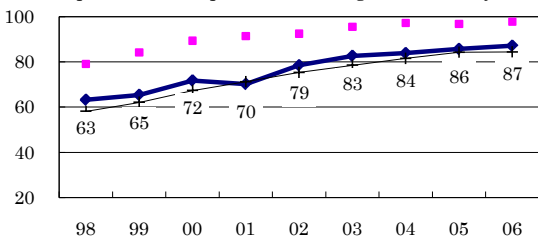
Proportion of bacillary cases among pulmonary cases



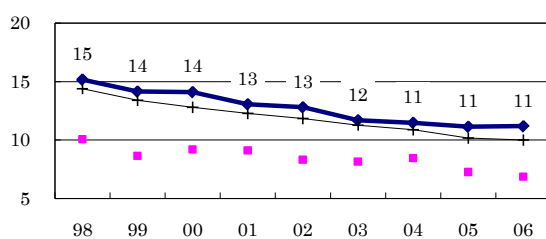
Treatment outcomes of new sputum smear-positive cases, 1997-2005 cohorts



Proportion of treatment with HRZ-E/S among new sputum smear-positive cases aged under 80 yrs



Estimated average treatment duration



Completed Others Died Failed Defaulted Unknown

	n=	305	304	308	256	312	325	281	322	298
Completed	7	21	21	54	67	73	80	76	76	76
Others	1	5	3	10	4	2	1	2	1	1
Died	0	1	0	4	15	18	14	14	14	16
Failed	1	3	5	4	7	5	3	4	4	4
Defaulted	0	0	0	2	4	2	1	2	2	2
Unknown	91	71	70	26	4	0	0	2	1	1