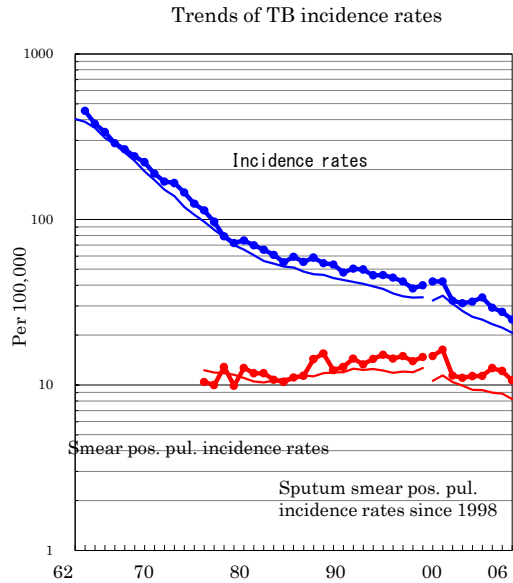
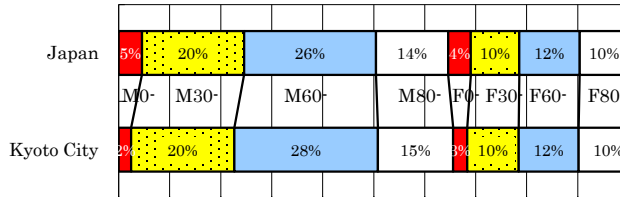


# Kyoto City

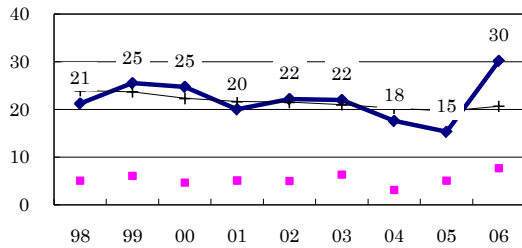
TB statistics in 2006		
Population	1,472,511	Kyoto City (Japan)
Foreigners' TB	14	3.8% (3.5%)
Estimated homeless TB among male cases aged 30-59 yrs	7	9.5% (8.9%)

Trends	02	03	04	05	06
Notified cases	467	494	428	407	366
Rate per 100,000	31.8	33.7	29.2	27.6	24.9
Sputum smear pos. pul. cases	166	166	185	179	157
Rate per 100,000	11.3	11.3	12.6	12.1	10.7

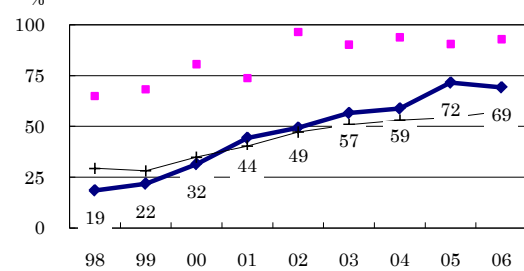
Age-sex composition of notified cases, 2006



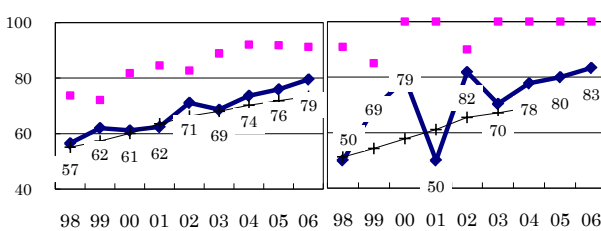
Proportion of cases with long diagnosis delay (>3M) among symptomatic pul. cases



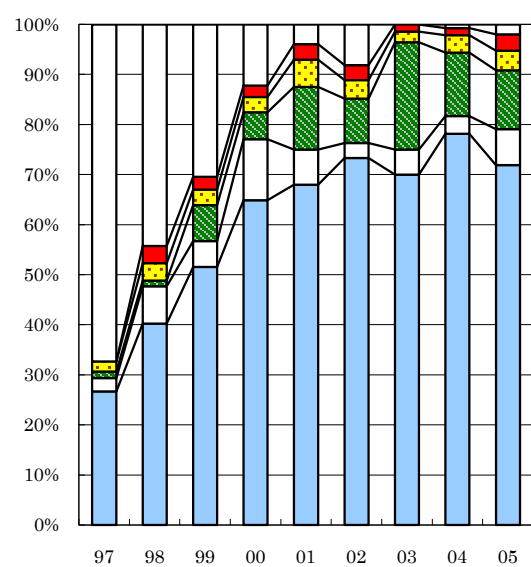
Proportion of positive or negative culture results among pulmonary cases



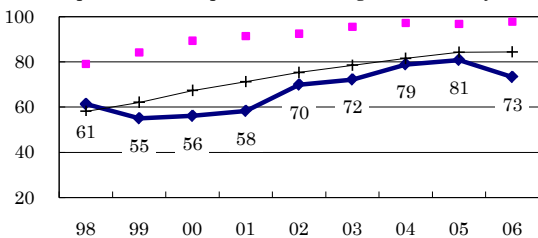
Proportion of bacillary cases among pulmonary cases (New treatment vs. Retreatment)



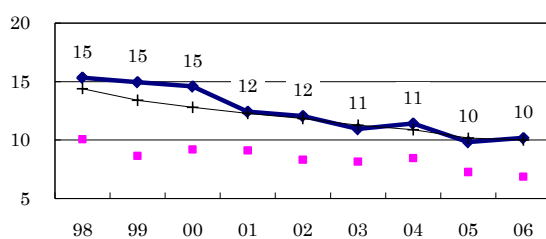
Treatment outcomes of new sputum smear-positive cases, 1997-2005 cohorts



Proportion of treatment with HRZ-E/S among new sputum smear-positive cases aged under 80 yrs



Estimated average treatment duration (Months)



Legend for Treatment Outcomes: Completed, Others, Died, Failed, Defaulted, Unknown

	n=	150	174	194	131	128	135	140	142	153
Completed	27	40	52	65	68	73	70	78	72	
Others	3	7	5	12	7	3	5	4	7	
Died	1	1	7	5	13	9	21	13	12	
Failed	2	3	3	3	5	4	2	4	4	
Defaulted	0	3	3	2	3	3	1	1	3	
Unknown	67	44	30	12	4	8	0	1	2	