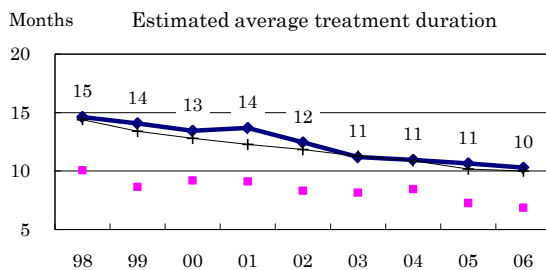
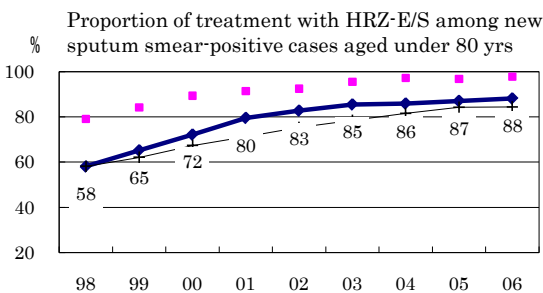
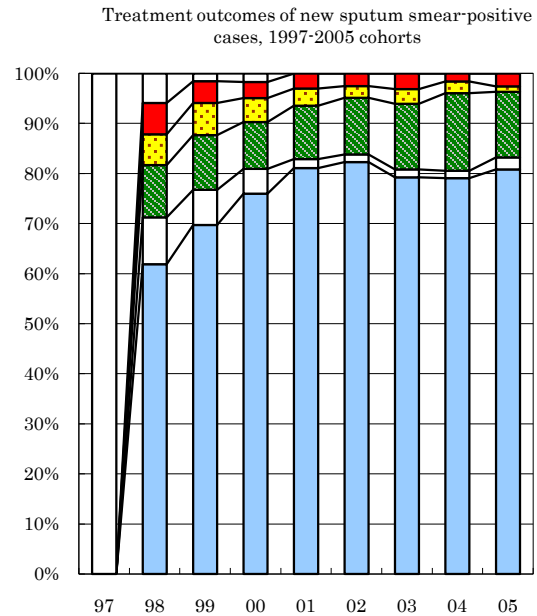
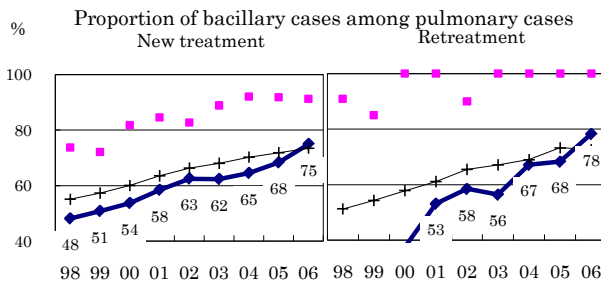
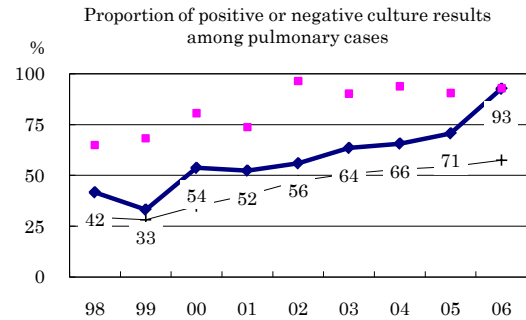
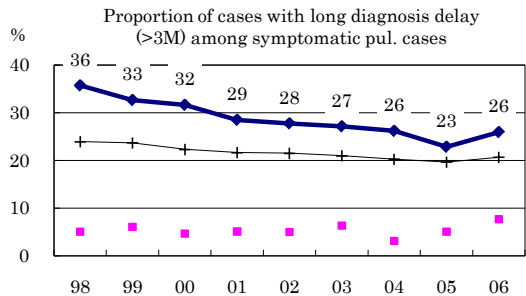
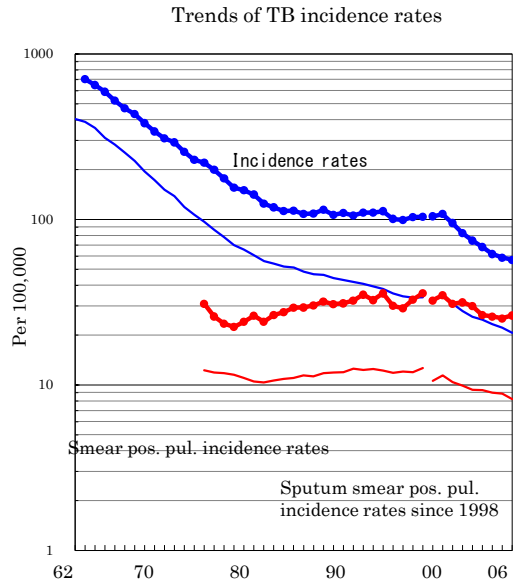
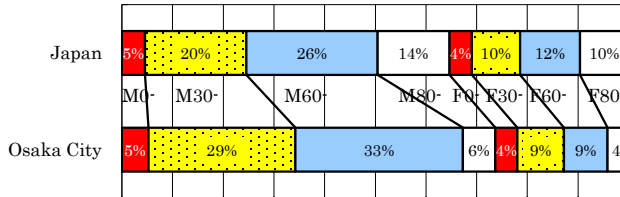


Osaka City

TB statistics in 2006		
Population	2,635,420	Osaka City (Japan)
Foreigners' TB	22	1.5% (3.5%)
Estimated homeless TB among male cases aged 30-59 yrs	74	17.0% (8.9%)

Trends	02	03	04	05	06
Notified cases	1,949	1,789	1,627	1,545	1,501
Rate per 100,000	74.4	68.1	61.8	58.8	57.0
Sputum smear pos. pul. cases	784	694	682	663	693
Rate per 100,000	29.9	26.4	25.9	25.2	26.3

Age-sex composition of notified cases, 2006



	97	98	99	00	01	02	03	04	05
n=	741	716	714	650	666	594	579	560	548
Completed	0	62	70	76	81	82	79	79	81
Others	0	9	7	5	2	2	2	1	2
Died	0	10	11	9	11	11	13	16	13
Failed	0	6	6	5	3	2	3	2	1
Defaulted	0	6	4	3	3	3	3	2	3
Unknown	100	6	2	2	0	0	0	0	0

—●— Osaka City —■— Best prefecture/city —+— Japan