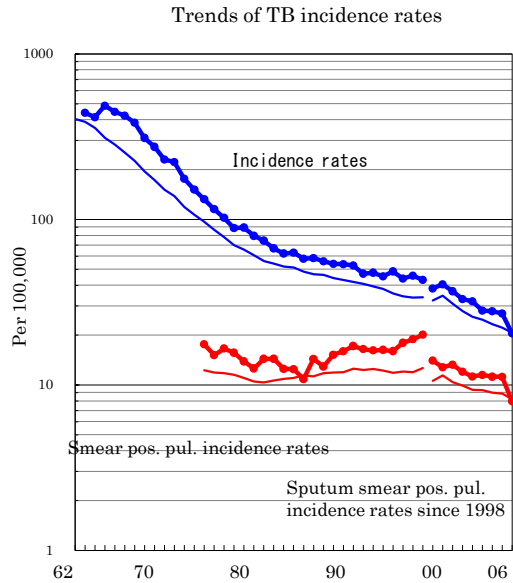
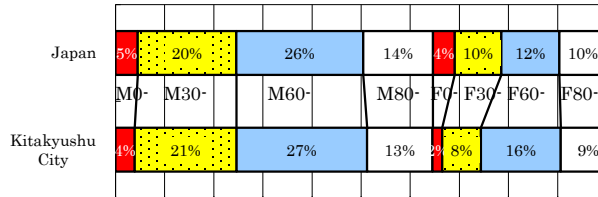


Kitakyushu City

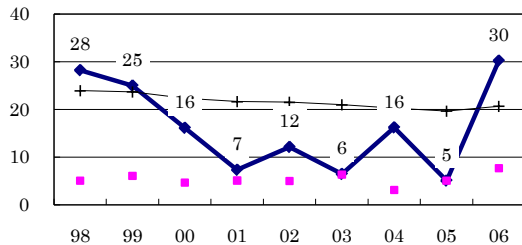
TB statistics in 2006		
Population	990,585 Kitakyushu City (Japan)	
Foreigners' TB	1	0.5% (3.5%)
Estimated homeless TB among male cases aged 30-59 yrs	2	4.8% (8.9%)

Trends	02	03	04	05	06
Notified cases	322	282	278	268	203
Rate per 100,000	32.0	28.1	27.8	27.0	20.5
Sputum smear pos. pul. cases	113	115	112	111	79
Rate per 100,000	11.2	11.5	11.2	11.2	8.0

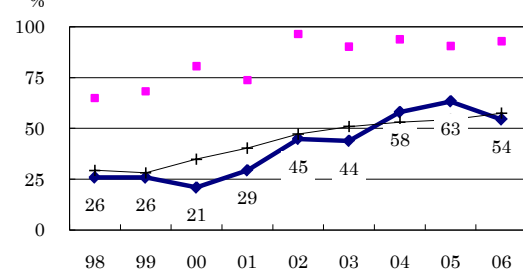
Age-sex composition of notified cases, 2006



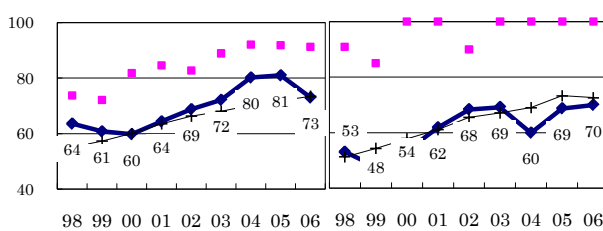
Proportion of cases with long diagnosis delay (>3M) among symptomatic pul. cases



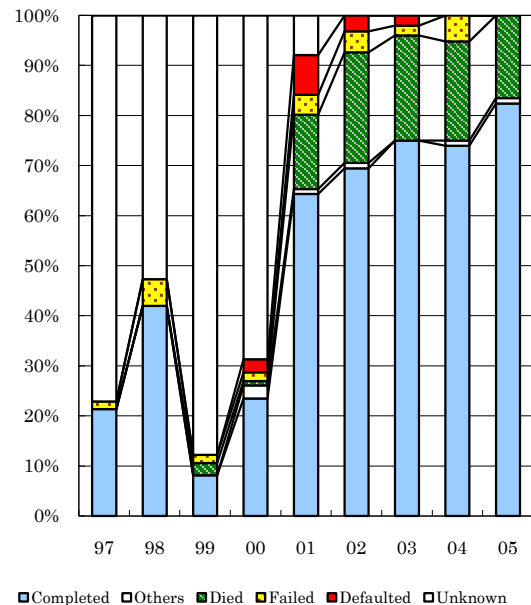
Proportion of positive or negative culture results among pulmonary cases



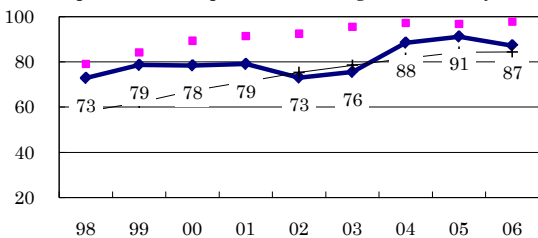
Proportion of bacillary cases among pulmonary cases (New treatment vs Retreatment)



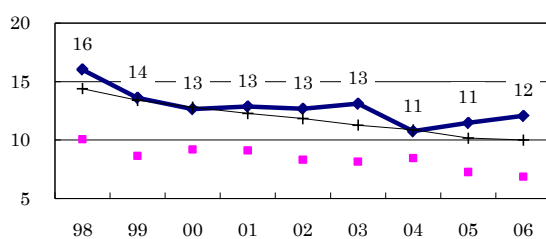
Treatment outcomes of new sputum smear-positive cases, 1997-2005 cohorts



Proportion of treatment with HRZ-E/S among new sputum smear-positive cases aged under 80 yrs



Estimated average treatment duration (Months)



Legend: Kitakyushu City (blue diamond), Best prefecture/city (pink square), Japan (black cross)

	n	97	98	99	00	01	02	03	04	05
Completed	21	42	8	23	64	69	75	74	82	82
Others	0	0	0	3	1	1	0	1	1	1
Died	0	0	2	1	15	22	21	20	16	16
Failed	2	5	2	2	4	4	2	5	0	0
Defaulted	0	0	0	3	8	3	2	0	0	0
Unknown	77	53	88	69	8	0	0	0	0	0