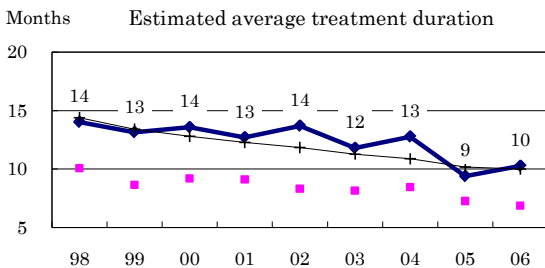
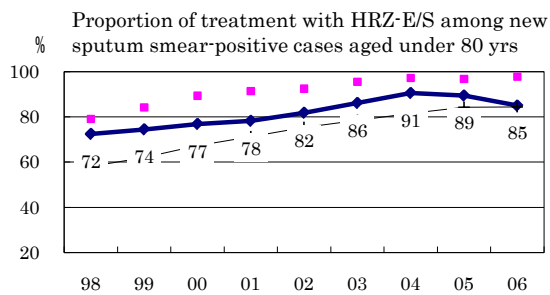
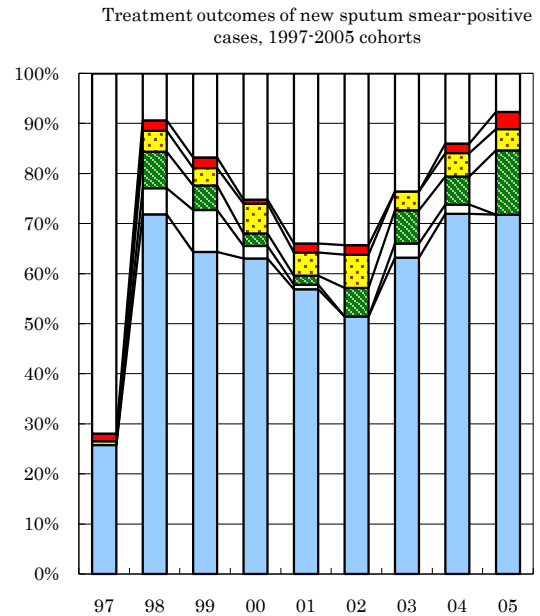
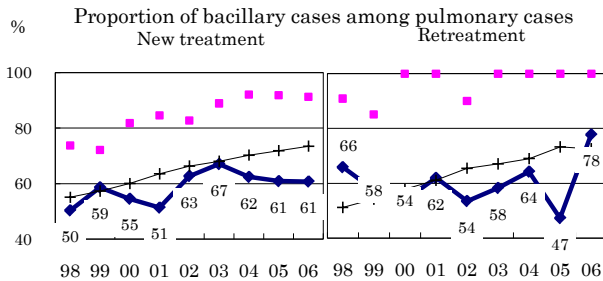
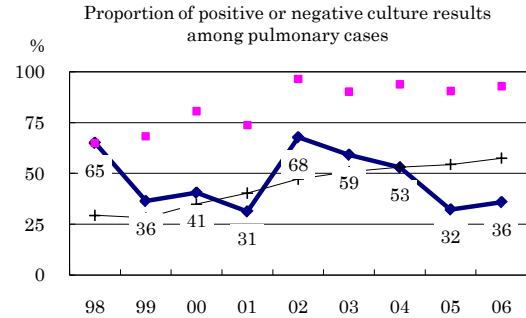
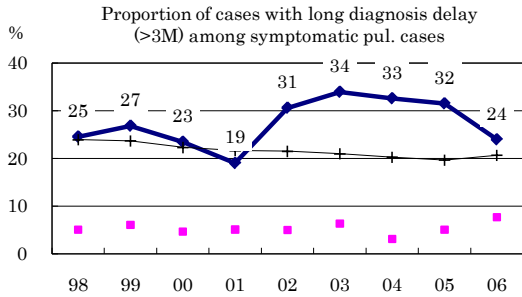
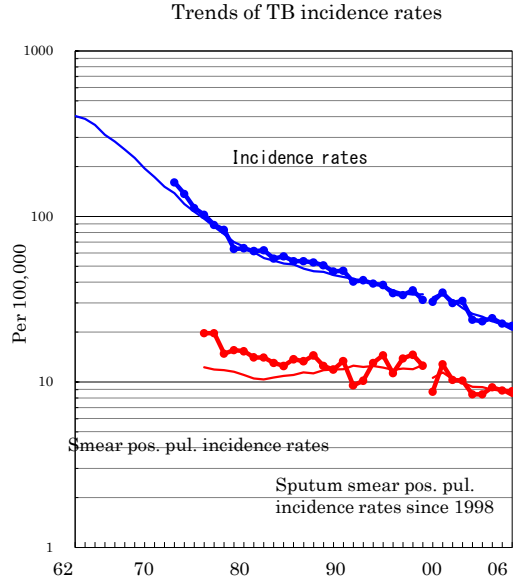
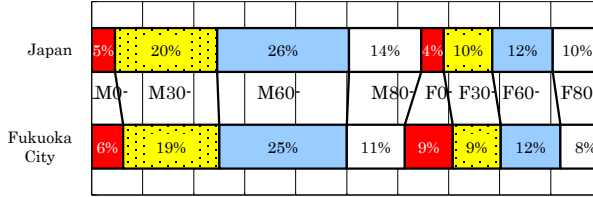


Fukuoka City

TB statistics in 2006		
Population	1,414,417	Fukuoka City (Japan)
Foreigners' TB	18	5.8% (3.5%)
Estimated homeless TB among male cases aged 30-59 yrs	9	15.5% (8.9%)

Trends	02	03	04	05	06
Notified cases	324	320	337	314	308
Rate per 100,000	23.7	23.2	24.2	22.4	21.8
Sputum smear pos. pul. cases	115	116	129	124	124
Rate per 100,000	8.4	8.4	9.3	8.9	8.8

Age-sex composition of notified cases, 2006



	Completed	Others	Died	Failed	Defaulted	Unknown
n=	132	96	143	119	109	105
Completed	26	72	64	63	57	51
Others	0	5	8	3	1	0
Died	0	7	5	3	2	6
Failed	1	4	3	6	5	7
Defaulted	2	2	2	1	2	2
Unknown	72	9	17	25	34	34

—◆— Fukuoka City —■— Best prefecture/city —+— Japan