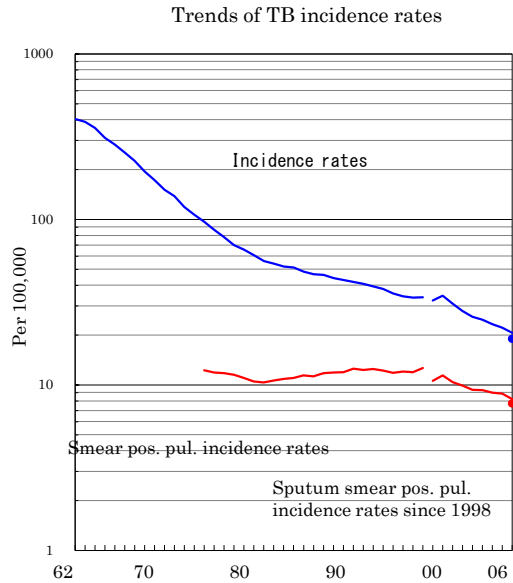
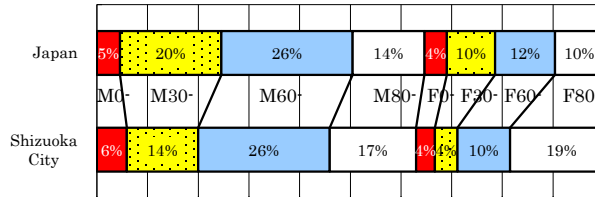


# Shizuoka City

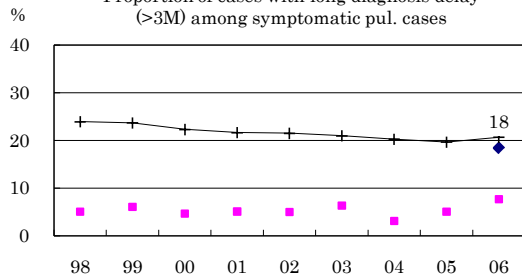
TB statistics in 2006		
Population	712,170	Shizuoka City (Japan)
Foreigners' TB	8	5.9% (3.5%)
Estimated homeless TB among male cases aged 30-59 yrs	0	0.0% (8.9%)

Trends	02	03	04	05	06
Notified cases	0	0	0	0	135
Rate per 100,000	0.0	0.0	0.0	0.0	19.0
Sputum smear pos. pul. cases	0	0	0	0	55
Rate per 100,000	0.0	0.0	0.0	0.0	7.7

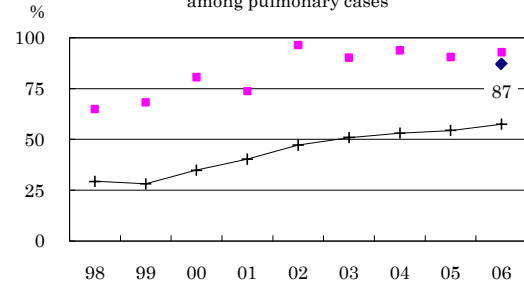
Age-sex composition of notified cases, 2006



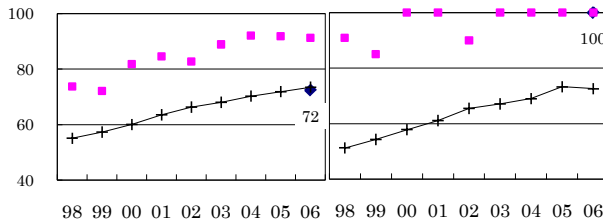
Proportion of cases with long diagnosis delay (>3M) among symptomatic pul. cases



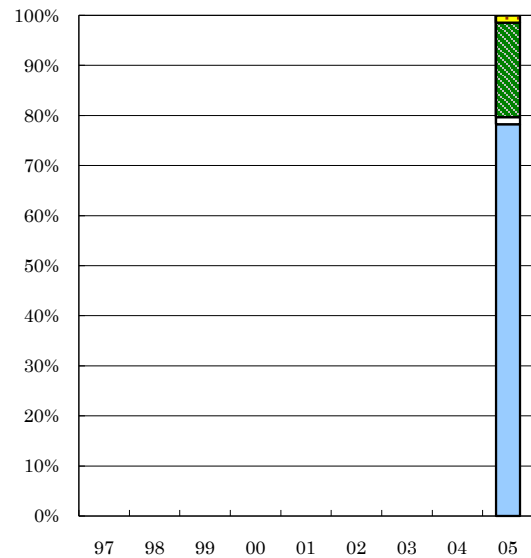
Proportion of positive or negative culture results among pulmonary cases



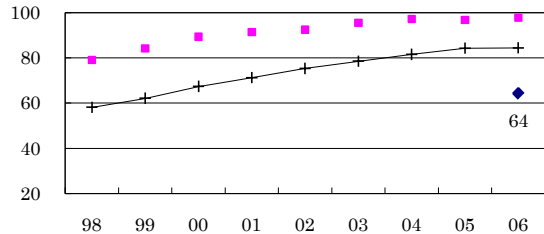
Proportion of bacillary cases among pulmonary cases



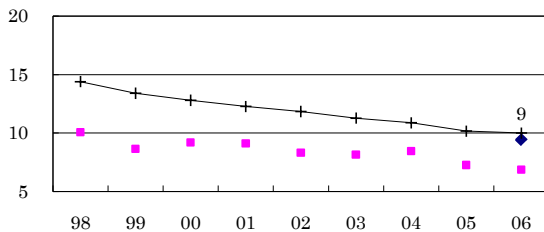
Treatment outcomes of new sputum smear-positive cases, 1997-2005 cohorts



Proportion of treatment with HRZ-E/S among new sputum smear-positive cases aged under 80 yrs



Estimated average treatment duration



	0	0	0	0	0	0	0	0	0	69
n=	0	0	0	0	0	0	0	0	0	69
Completed	0	0	0	0	0	0	0	0	0	78
Others	0	0	0	0	0	0	0	0	0	1
Died	0	0	0	0	0	0	0	0	0	19
Failed	0	0	0	0	0	0	0	0	0	1
Defaulted	0	0	0	0	0	0	0	0	0	0
Unknown	0	0	0	0	0	0	0	0	0	0

—●— Shizuoka City    ■ Best prefecture/city    —+— Japan