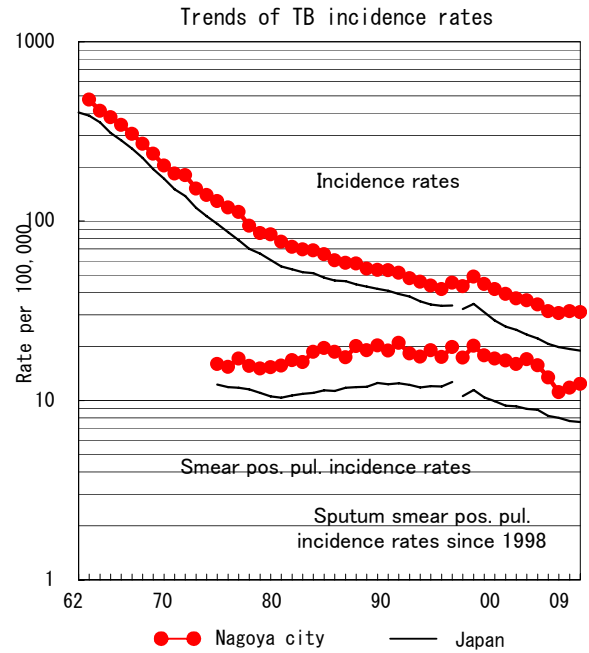
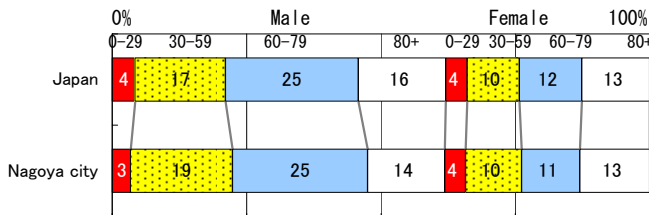


Nagoya city

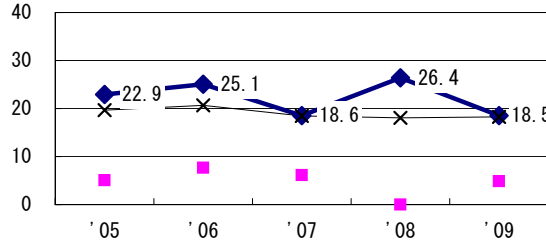
TB statistics in 2009		
Population	2,257,888	(Japan)
Foreigners	49	7.0% (3.9%)
Estimated homeless or poor TB among male cases aged 30-59 yrs	23	17.3% (12.0%)

Trends	'05	'06	'07	'08	'09
Notified cases	760	700	685	707	701
Rate per 100,000	34.3	31.5	30.6	31.5	31.0
Sputum smear pos. pul. cases	347	298	249	265	279
Rate per 100,000	15.7	13.4	11.1	11.8	12.4

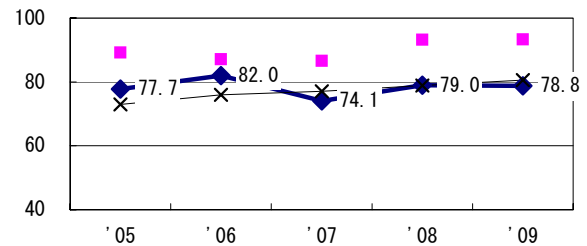
Age-sex composition of notified cases, 2009



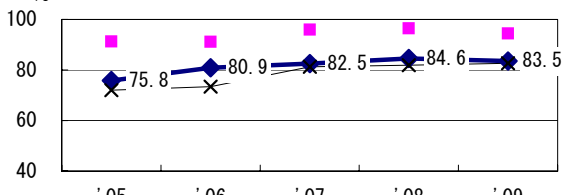
Proportion of cases with long case finding delay (>3M) among symptomatic pul. TB †



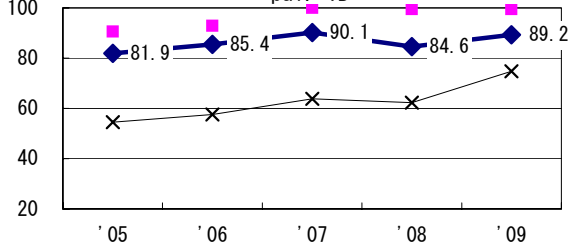
Proportion of Tx with HRZ-E/S among all forms of TB cases aged under 80 yrs ‡



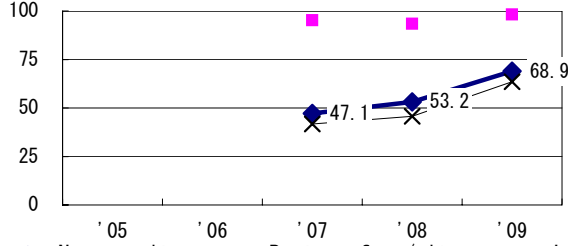
Proportion of bacillary cases among pul. TB



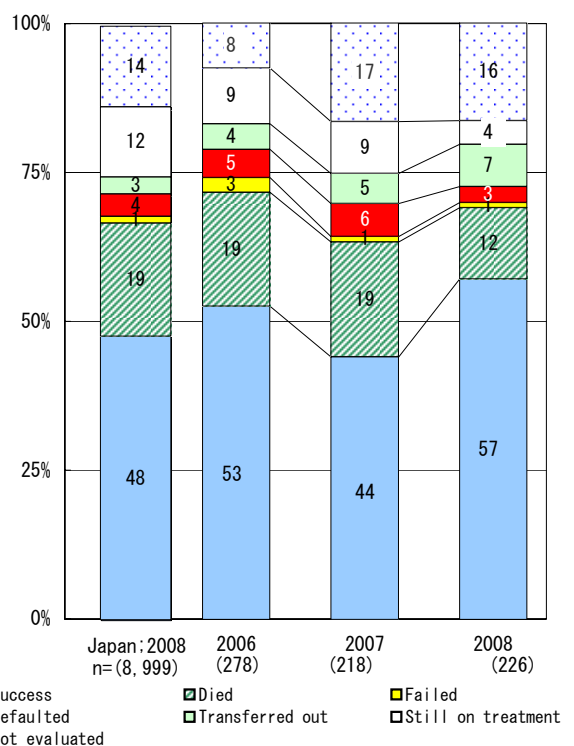
Proportion of culture results obtained among pul. TB



Proportion of DST results obtained among culture pos. pul. TB



Treatment outcomes of new sputum smear-pos. pul. cases registered in 2006-2008



	'05	'06	'07	'08	'09
† Excluding unk delay (%)	1.9	3.2	3.2	17.6	20.7
‡ Excluding unk Tx (%)	1.5	1.9	1.1	1.9	1.0

Registered year	'07	'08	Japan
Median days of treatment (all forms)	274	254	(272)
Median days of hospitalization (pul. TB)	75	74	(67)